

Norton

Parts Catalogue

for

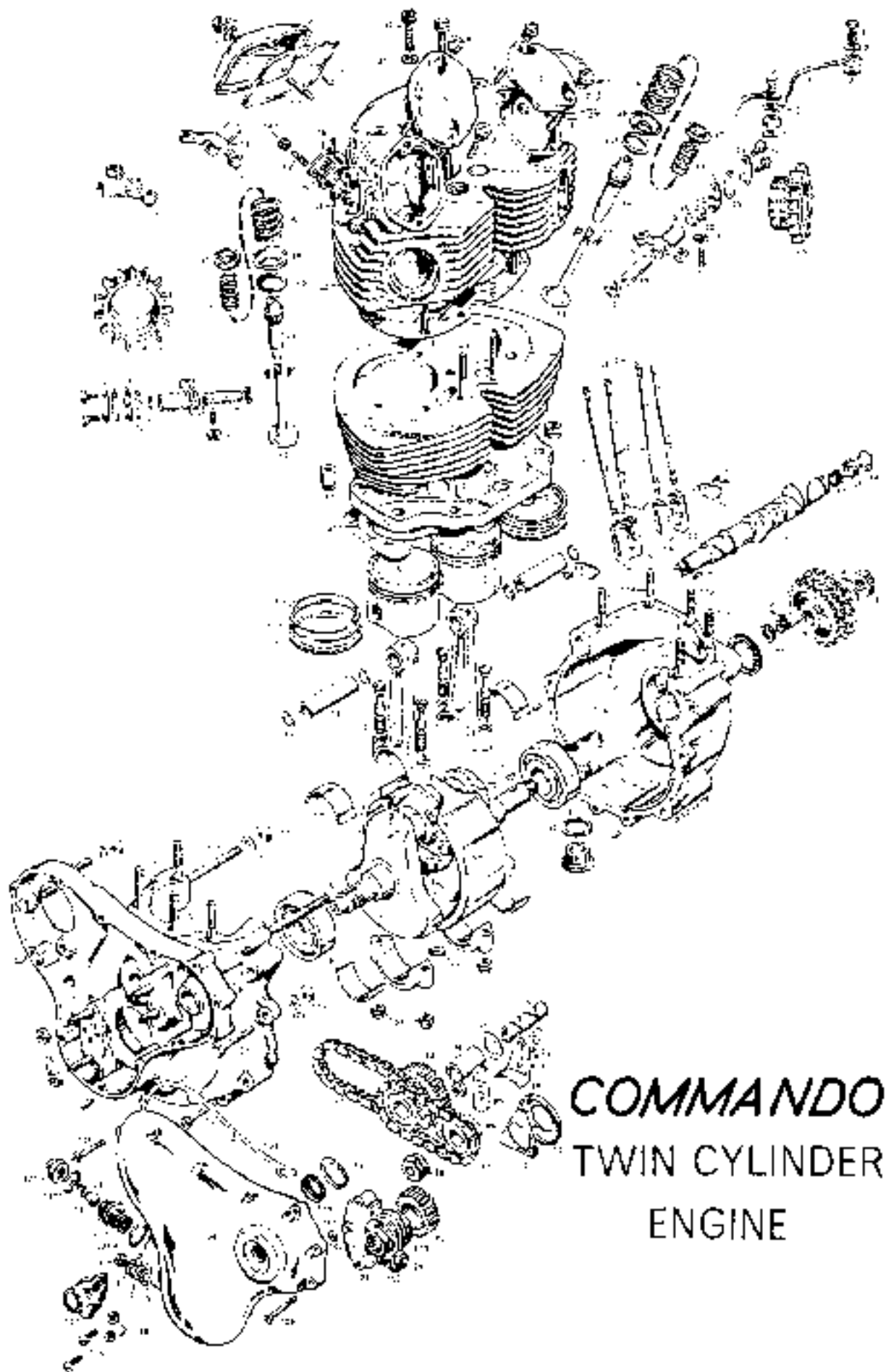
1968 ~ 1970

Commando 750

*Compiled from original Norton Factory documentation
© HDP 2001*

INDEX

Alternator	30	Headlamp	28
Air cable	20	Head steady stay	7
Air filter	31	Horn	10
Accessory cover	31	Ignition coil capacitor	31
Battery and fittings	31	Kickstart	14
Battery box and carrier	24	Main bearings	5
Bearings—main	5	Mudguard—front	19
Brake and air lever	20	Mudguard—rear	19
Brake cable	20	Number plate—front	19
Brake operating parts	20	Number plate—rear and reflectors	19
Cable clips	32	Oil pipes	22
Carburettor—Amal Type 530	9	Oil pump	6
Centre stand	17	Oil tank	22
Cylinder—front	24	Fuel tank	22
Crank case—rear	24	Oil footrests	24
Clains	14	Pistons and rings—standard	5
Clutch	13	Pistons and rings—oversize	5
Clutch cable	13	Pressure release	4
Clutch lever	13	Rope stand	17
Clutch operating parts	13	Rear lamp	20
Coil capacitor—ignition	30	Rear suspension units	15
Connecting rod	4	Rectifier and Zener diode	31
Crankcase	4	Revolution counter	33
Crankcase bolts	7	Rockers and covers	6
Crankcase breather	4	Seat—twin	22
Crankshaft	4	Stoppers	9
Cylinder barrel and head	5	Speedometer	23
Cylinder oiler	22	Steering damper	19
Engine plates and bolts	7	Stop light	10
Engine sprocket	5	Stop light adjuster	10
Exhaust pipe	9	Swinging arm	15
Footrests	17	Switches and electrical switches	31
Frame	15	Tail section	33
Front forks	17	Throttle and push rods	6
Gasket sets	31	Throttle cable	20
Gearbox bearings and seals	13	Timing gear	6
Gearbox fixing parts	11	Tools	33
Gearbox shell	11	Twin seat	22
Gearbox sprocket	11	Twist grip	20
Gearchange	11	Valves, guides and springs	7
Gears and shafts	11	Wheel—front	27
Handlebar	9	Wheel—rear	27
Handbrake and air lever	20	Zener diode, rectifier	31



COMMANDO
TWIN CYLINDER
ENGINE

A ENGINE

- 1 Banjo bolt for oil feed pipe.
- 2 Washer for banjo bolt.
- 3 Rocker feed pipe assembly.
- 4 Dome nut for rear cap.
- 4A Stud for rear cap.
- 5 Washer for domed nut.
- 6 Rocker box cap (Rear).
- 7 Sealing washer for rear cap.
- 8 Nut for rocker box front cap stud.
- 9 Rocker box cap (Front).
- 10 Sealing washer for front cap.
- 11 Stud for front cap.
- 12 Rocker inlet, right hand.
- 13 Rocker inlet, left hand.
- 14 Rocker exhaust, right hand.
- 15 Rocker exhaust, left hand.
- 16 Rocker ball end.
- 17 Rocker adjuster.
- 18 Nut for adjuster.
- 19 Rocker shaft.
- 20 Thrust washer for shaft.
- 21 Spring washer for shaft.
- 22 Joint washer for shaft.
- 23 Locking plate for shaft.
- 24 Retaining plate for shaft.
- 25 Joint washer for plate.
- 26 Bolt for shaft retaining plate.
- 27 Dowel for rocker box cap (Rear).
- 28 Inlet manifold.
- 29 Allen bolt manifold to head.
- 30 Allen bolt for head steady plate.
- 31 Washer for bolt.
- 32 Cylinder head, with valve guides.
- 33 Finned locking nut for exhaust pipe.
- 34 Gasket cylinder head to barrel.
- 35 Cylinder barrel.
- 36 Washer cylinder base to Crankcase.
- 37 Cylinder head bolt (long).
- 37 Cylinder head bolt (short).
- 38 Stud cylinder barrel to head.
- 39 Stud, cylinder head to barrel.
- 40 Nut, cylinder head to barrel stud.
- 41 Valve exhaust.
- 42 Valve guide, inlet or exhaust.
- 43 Valve spring, inner.
- 44 Valve spring, outer.
- 45 Valve spring top cap.
- 46 Valve spring bottom collar.
- 47 Valve collet.
- 48 Push rod complete, inlet.
- 49 Push rod complete, exhaust.
- 50 Push rod top end.
- 51 Push rod bottom end.
- 52 Tappet, right hand.
- 53 Tappet, left hand.
- 54 Tappet location plate.
- 55 Screw for location plate.
- 56 Piston complete, left hand.
- 57 Piston complete, right hand.
- 58 Piston ring, compression, top, chrome.
- 59 Piston ring, compression, bottom, plain.
- 60 Piston ring, scraper.
- 61 Gudgeon pin.
- 62 Circlip for gudgeon pin.
- 63 Connecting rod.
- 64 Big end cap bolt.
- 65 Nut for cap bolt.
- 66 Big end bearing shell, upper.
- 67 Big end bearing shell, lower.
- 68 Flywheel.
- 69 Crankshaft timing side.
- 70 Crankshaft driving side.
- 71 Engine sprocket 26 teeth.
- 72 Retaining nut for rotor.
- 73 Washer for rotor.
- 74 Key for engine sprocket.
- 75 Mainshaft bearing, timing side.
- 76 Sealing washer timing side bearing.
- 77 Mainshaft roller bearing, driving side.
- 78 Driving side shaft oil seal.
- 79 Half nine pinion.
- 80 Barking plate for pinion.
- 81 Camshaft.
- 82 Stationary plate, camshaft breather.
- 83 Rotary plate, timing breather.
- 84 Spring for breather.
- 85 Camshaft sprocket.
- 86 Key for sprocket.
- 87 Nut for sprocket and rev-counter drive.
- 88 Chain tensioner support.
- 89 Plate for chain tensioner (Thick).
- 90 Plate for chain tensioner (Thin).
- 91 Stud for chain tensioner.
- 92 Intermediate gear, with sprocket.
- 93 Bush for intermediate gear.
- 94 Washer for intermediate gear.
- 95 Spline for intermediate gear.
- 96 Driving chain for ignition.
- 97 Oil pump assembly.
- 98 Nut for oil pump support.
- 99 Worm gear wheel for pump.
- 100 Feed bush for pump.
- 101 Sealing washer for feed bush.
- 102 Pump driving wheel for mainshaft.
- 103 Stud, oil pump to crankcase.
- 104 Nut for stud.
- 105 Crankcase, driving side only.
- 106 Crankcase, timing side only.
- 107 Timing cover (for rev-counter fixing).
- 108 Crankcase cylinder base stud.
- 109 Crankcase cylinder base stud $\frac{1}{2}$ in dia.
- 110 Crankcase cylinder base stud $\frac{3}{8}$ in dia.
- 111 Nut, cylinder base stud $\frac{1}{2}$ in.
- 112 Screw, timing to driving side crankcase with.
- 113 Circlip, mainshaft oil seal.
- 114 Pressure release assembly.
- 115 Pressure release stop.
- 116 Pressure release spring.
- 117 Pressure release pin on nut washer.
- 118 Pressure release body nut.
- 119 Washer for pressure release union.
- 120 Crankcase bolt (short).
- 121 Nut for bolt.
- 122 Washer for bolt.
- 123 Crankcase top stud (Rear).
- 124 Nut for stud.
- 125 Washer for stud.
- 126 Crankcase top stud (Front).
- 127 Elbow for Crankcase breather pipe.
- 128 Nut, for crankcase breather elbow.
- 129 Crankcase oil pump filter body.
- 130 O and A, washer filter body.
- 131 Timing cover gasket.
- 132 Timing cover screw, Long.
- 133 Timing cover screw, Short.
- 134 Fixing screw revolution counter drive.
- 135 Gear box revolution counter drive.
- 136 Washer for fixing screw.
- 137 Key for alternator rotor.
- 138 Driving chain for camshaft.
- 139 Stud inlet manifold to carburettor.
- 140 Nut for stud.
- 141 Washer for stud.
- 142 Heat resisting washer.

Plate No.	Part No.	Description	Qty.	Bin No.
-----------	----------	-------------	------	---------

CRANKSHAFT

	26.0571	Crankshaft assembly—less connecting rods	1	
A70	23262	Crankcheek—timing side	1	
A71	26.0542	Crankcheek—driving side	1	
A59	26.0711	Flywheel only	1	
	1.2105	Flywheel crankcheek dowel	1	
	1.2033	Crankcheek bolt	4	
	1.2086	Crankcheek stud	2	
	T.2032	Nut retaining plate	2	
	T.2031	Crankcheek stud nut	6	
	23280	Crankcheek bolt nut	2	
	F.4591	Crankshaft plug	1	

CONNECTING ROD

A65	25369	Connecting rod with cap	2	
A66	23254	Connecting rod cap bolt	4	
A67	23253	Cap bolt nut	4	
A58	25384	Connecting rod bearing shell (top half) standard	2	
	23255	Connecting rod bearing shell (bottom half) standard	2	
	25409	Connecting rod bearing shell (top half) .010 in.	2	
	25410	Connecting rod bearing shell (top half) .020 in.	2	
	25411	Connecting rod bearing shell (top half) .030 in.	2	
	25413	Connecting rod bearing shell (top half) .040 in.	2	
	25155	Connecting rod bearing shell (bottom half) .010 in.	2	
	25156	Connecting rod bearing shell (bottom half) .020 in.	2	
	25157	Connecting rod bearing shell (bottom half) .030 in.	2	
	25158	Connecting rod bearing shell (bottom half) .040 in.	2	

CRANKCASE

	26.0600	Crankcase complete with timing cover	1	
	26.060	Crankcase halves assembled—less timing cover	1	
A108	26.0716	Timing cover	1	
A106	26.0603	Crankcase (drive side)	1	
A107	26.0717	Crankcase (timing side)	1	
A113	26.0719	Timing cover gasket	1	
A109	24251	Cylinder barrel stud	6	
A110	1.2059	Cylinder barrel stud (stepped)	2	
A111	18563	Cylinder barrel stud (front)	1	
A114	16639	Timing cover screw—long	6	
A115	F.6980	Timing cover screw—short	6	
A112	24689	Sump screw	2	
	T.2035	Camshaft bush (timing side)	1	
	T.2037	Camshaft bush (driving side)	1	
A114	248023	Oil seal (timing side shaft)	1	
A115	249079	Oil seal circlip	1	
A131	16945	Sump filter body	1	
A132	16942	Filter body washer	1	
	16948	Filter body circlip	1	
	16946	Filter gauze	1	
	16947	Filter gauze washer	1	
	E.459	Timing cover oilway plug	1	
	16902	Oilway set pin	1	
	T.1084	Set pin washer	1	

CRANKCASE BREATHER

	19629	Rubber breather pipe—27 in.	1	
A129	24300	Breather pipe elbow	1	
	13785	Elbow washer	1	
A130	24301	Elbow nut	1	
	26.0576	Ferrule	1	

PRESSURE RELEASE

A116	T.2055A	Pressure release body assembly	1	
A118	T.2054	Release body piston	1	
A119	T.2061	Release body piston spring	1	
	15404	Packing shim	AR	
A121	T.2060	Release body nut	1	
A121a	T.2056	Release union washer	1	
A120	T.2057	Release body nut washer	1	

Part No.	Part No.	Description	Qty	8- No.
CYLINDER BARREL AND HEAD				
A36	06 0396	Cylinder barrel	1	
A31	06 0989	Cylinder head complete with valve guides	1	
A35	06 0400	Cylinder head gasket	1	
A117	T 2016	Cylinder barrel stud nut— $\frac{1}{2}$ in.	1	
A42	24250	Cylinder barrel stud nut	1	
	T 2210	Cylinder barrel stud nut— $\frac{3}{8}$ in.	6	
	000011	Cylinder barrel stepped stud washer	2	
	24252	Cylinder barrel stud washer	2	
A37	24249	Cylinder base gasket	1	
A40	T 2161	Head to barrel stud— $\frac{1}{2}$ in.	1	
A41	24389	Head to barrel stud	2	
	24260	Head stud nut	3	
	T 2017	Head stud nut— $\frac{1}{2}$ in.	2	
	000011	Cylinder head stud washer	2	
	24750	Head stud nut (rear)	1	
A38	06 0401	Cylinder head bolt—long	4	
A39	25113	Cylinder head bolt—short	1	
	01623	Cylinder head bolt washer	5	

VALVES, GUIDES AND SPRINGS

	25501	Inlet valve	2	
A43	25500	Exhaust valve	2	
A44	T 101	Valve guide	2	
A145	23392	Heat resisting washer	4	
A48	T 2073	Valve spring cup	4	
A45	22829	Valve spring liner	4	
A46	22832	Valve spring (outer)	4	
A47	T 186	Valve spring collar	4	
A49	T 187	Valve cotter	4	

PISTONS AND RINGS (STANDARD)

A50	06 0381	Piston complete, left hand	1	
A51	06 0382	Piston complete, right hand	1	
A60	06 0952	Piston ring top (chrome)	2	
A61	06 0953	Piston ring plain	2	
A62	06 0954	Piston ring scraper	2	
A63	06 0955	Gudgeon pin	2	
A64	23276	Gudgeon pin circlip	4	

PISTONS AND RINGS (OVERSIZE)

06 0956	Piston complete left hand—+010 in.	1	
06 0957	Piston complete right hand—+010 in.	1	
06 0960	Piston ring top (chrome)—+010 in.	2	
06 0961	Piston ring plain—+010 in.	2	
06 0962	Piston ring scraper—+010 in.	2	
06 0963	Piston complete left hand—+020 in.	1	
06 0964	Piston complete right hand—+020 in.	1	
06 0967	Piston ring top (chrome)—+020 in.	2	
06 0968	Piston ring plain—+020 in.	2	
06 0969	Piston ring scraper—+020 in.	2	
06 0970	Piston complete left hand—+030 in.	1	
06 0971	Piston complete right hand—+030 in.	1	
06 0974	Piston ring top (chrome)—+030 in.	2	
06 0975	Piston ring plain—+030 in.	2	
06 0976	Piston ring scraper—+030 in.	2	
06 0977	Piston complete left hand—+040 in.	1	
06 0978	Piston complete right hand—+040 in.	1	
06 0981	Piston ring top (chrome)—+040 in.	2	
06 0982	Piston ring plain—+040 in.	2	
06 0983	Piston ring scraper—+040 in.	2	

MAIN BEARINGS

A76	17822	Ball bearing (timing side)	1	
A77	T 2008	Sealing washer (timing side bearing)	1	
A78	17824	Roller bearing (drive side)	1	
A79	T 2187	Oil seal (drive side bearing)	1	
	T 2196A	Crankshaft bearing shim	1	

TIMING GEAR

A80	T.2335	Half-time pin on	1	
	000572	Pinion key	1	
A81	T.2907	Pinion backing plate	1	
A82	22729	Camshaft	1	
A83	T.2979	Camshaft breather plate (stationary)	1	
A84	74301	Breather plate (rotary)	1	
A85	T.2108	Breather spring	1	
A86	20829	Camshaft sprocket	1	
A87	000572	Camshaft sprocket key	1	
A88	17211	Sprocket and rev. counter drive nut	1	
A141	17906	Camshaft chain (38 link—endless)	1	
A89	T.2217	Chain tension slipper	1	
A90	T.2219	Chain tensioner plate (thick)	1	
A91	T.2218A	Chain tensioner plate (thin)	1	
A92	1.247	Chain tensioner stud	2	
	E.3231	Chain tensioner stud nut	2	
	18202	Chain tensioner stud washer (for disc $\frac{1}{2}$ in.)	2	
A93	50008	Intermediate gear with sprockets	1	
A94	T.2526	Intermediate gear bush	1	
A95	T.2280	Intermediate gear washer	1	
A96	T.2221	Intermediate gear spindle	1	
	17823	Intermediate spindle end pin	1	
A97	16257	Distributor drive chain	1	

TAPPETS AND PUSH RODS

A94 S	(22771	Tappets (left hand)	2	Sold in pairs
	(22772	Tappets (right hand)	2	Sold in pairs
A96	T.2140	Tappet locating plate	2	
A97	T.2141	Locating plate screw	2	
A90	25515	Inlet push rod complete—long	2	
A91	25516	Exhaust push rod complete—short	2	
	25495	Inlet push rod less ends—long	2	
	25497	Exhaust push rod less ends—short	2	
A92	T.2064	Push rod end (top)	4	
A93	T.2162	Push rod end (bottom)	4	

ROCKERS, COVERS, ETC.

A12	25332	Rocker inlet (right hand)	1	
A13	25330	Rocker inlet (left hand)	1	
A 4	25336	Rocker exhaust (right hand)	3	
A 5	25334	Rocker exhaust (left hand)	1	
A 6	T.2063	Rocker ball end	4	
A 7	T.2074	Rocker adjuster	4	
A18	T.232	Rocker adjuster nut	4	
A19	25350	Rocker shaft	4	
A20	18102	Rocker shaft thrust washer	4	
A21	18103	Rocker shaft spring washer	4	
A22	T.2083	Rocker shaft joint washer	4	
A23	T.2238	Rocker shaft locking plate	4	
A24	T.2239	Rocker shaft retaining plate	4	
A25	T.2240	Rocker shaft plate joint washer	4	
A26	T.2256	Retaining plate sec pin	8	
A4	T.2162	Rear cap domed nut	1	
A5	T.2062	Domed nut washer	1	
A6	18094	Rear rocker cap	1	
A7	T.2084	Rear cap sealing washer	1	
A4a	18033	Rear cap stud	1	
A17	000579	Rear cap dowel	1	
A8	T.2065	Front cap nut	4	
A9	18093	Front rocker cap	2	
A10	T.2068	Front cap sealing washer	2	
A11	T.2252	Front cap stud	4	

OIL PUMP

A96	25396	Oil pump complete	1	
A99	15511A	Oil pump spindle nut	1	
A100	24733	Worm gear wheel (on pump)	1	
	17697	Gear wheel key	1	

Plate No.	Part No.	Description	Qty.	Bin No.
OIL PUMP—continued				
A101	15515	Pump feet bush	1	
A102	T.272	Feed bush seating washer	1	
A103	24732	Driving worm on mainshaft and pinion nut	1	
A104	E.4440	Pump-to-crankcase stud	2	
A105	E.1211	Pump stud nut	2	
	E.4590	Oil stop grub screw	1	
	Z1145	Pump feed bush shim	2	

HEAD STEADY STAY

J22	06.0189	Engine steady stay	1	
J19	06.0490	Engine steady stay spacer	2	
J21	06.0622	Engine steady stay rubber	2	
	000192	Engine steady stay washer	6	
J19	06.0490	Engine steady stay stud	2	
J20	06.0346	Engine steady stay nut	6	
J15, A30	19437	Engine steady stay screw	3	
J16, A31	000011	Engine steady stay screw washer	3	
J23	06.0830	Engine steady stay plate	2	
J17	06.0914	Engine steady spacer	1	

CRANKCASE BOLTS

	E.3214	Crankcase bottom stud	1	
	E.3231	Crankcase bottom stud nut	1	
A122	13870	Crankcase nut	1	
A124	E.5456	Crankcase bolt washer	1	
A123	E.3223	Crankcase bolt nut	1	
A125	T.2011	Crankcase stud top rear	1	
A127	000010	Crankcase stud washer	1	
A126	F.3224A	Crankcase stud nut	1	
A128	19077	Crankcase stud top front	1	
	T.2251	Crankcase stud washer	1	
	E.3229	Crankcase stud nut	1	

ENGINE PLATES AND BOLTS

	06.0430	Crankcase—engine plate stud	2	
	014119	Stud washer	4	
	06.0029	Stud nut	4	
	22694	Crankcase—engine plate and frame stud (bottom)	1	
	06.0431	Crankcase—engine plate stud (top rear)	1	
	014119	Stud washer	1	
	06.0029	Stud nut	1	
	06.0431	Rear engine plate stud (top)	1	
	014119	Rear engine plate stud washer	1	
	06.0029	Rear engine plate stud nut	1	
	06.0431	Crankcase-engine plate stud (centre rear)	1	
	014119	Stud washer	2	
	06.0029	Stud nut	2	
	06.0624	Crankcase-engine plate stud (bottom rear)	1	
	014117	Stud washer	2	
	06.0248	Stud nut	2	
B12	06.0418	Front engine mounting (assembled)	1	
B19	06.0421	Front engine mounting rubber	1	
B16	06.0771	Front engine mounting seating spacer	2	
B14	06.0427	Front engine mounting spacer	1	
B13, B15	06.0428	Front engine mounting spacer rubber	2	
B20	06.0773	Front engine mounting garter	2	
	06.0423	Front engine mounting bolt	1	
B21	06.0422	Front engine mounting bolt collar	2	
	000008	Front engine mounting bolt washer	2	
	06.0438	Front engine mounting bolt nut	1	
B17	06.0654	Front engine mounting tube cap	2	
B1	06.0424	Rear engine mounting assembled	1	
B6	06.0432	Rear engine mounting rubber	2	
B5	06.0772	Rear engine mounting seating spacer	1	
B2	06.0434	Rear engine mounting spacer assembled	1	
B8	06.0774	Rear engine mounting garter	2	
	06.0437	Rear engine mounting stud	1	
B9	06.0436	Rear engine mounting stud collar	2	
	000008	Rear engine mounting stud washer	2	
B3, B49	06.0435	Rear engine mounting rubber spacer	2	
B10	06.0685	Rear engine mounting tube cap	2	



B ENGINE PLATE

Plate No.	Part No.	Description	Qty.	Bin No.
ENGINE PLATES AND BOLTS—continued				
B7	06.0438	Rear engine mounting stud nut	...	2
	06.0775	Engine mounting shim .005 in. rear	...	AR
	06.0776	Engine mounting shim .010 in. rear	...	AR
	06.0777	Engine mounting shim .020 in. rear	...	AR
B11, B22	06.0778	Engine mounting shim .030 in. rear	...	AR
	06.0578	Engine mounting shim (polyurethane) 1/4 in. front-rear	...	AK
B18	06.0686	Engine mounting shim .005 in. front	...	4
	06.0687	Engine mounting shim 0.0 in. front	...	AR
	06.0688	Engine mounting shim .020 in. front	...	AR
	06.0689	Engine mounting shim .030 in. front	...	AR

ENGINE SPROCKET

K29 A72	06.0083	Sprocket (standard timing) 15T	...	1
K8 A75	036E2	Engine sprocket key	...	8

CARBURETTOR

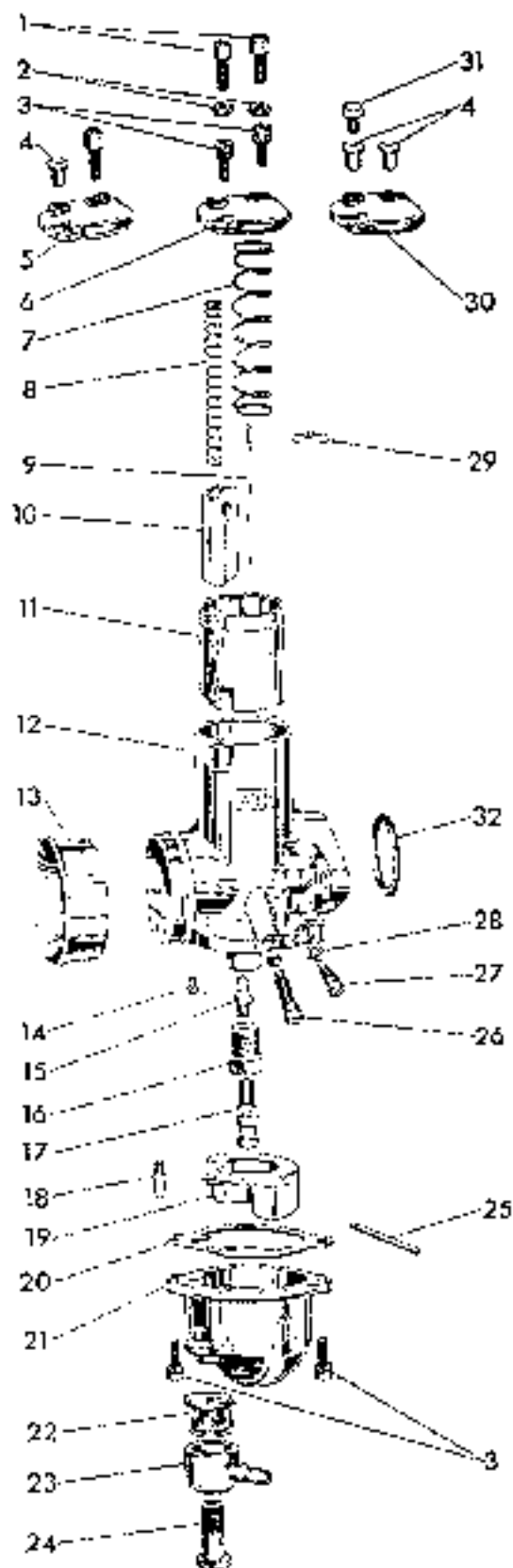
A29	10358	Carburettor spacer	...	1
	06.0505	Carburettor manifold	...	1
	06.0670	Balance union	...	2
	1.775	Balance union washers	...	2
	13580	Balance pipe hose 5/16 in.	...	1
A142	06.0573	Carburettor fixing stud	...	4
A143	06.034E	Carburettor fixing stud nut	...	4
A79	1347	Intake manifold screw	...	4
C32	03128	Carburettor flange "O" ring	...	1
	06.0586	Carburettor complete (left hand) less cables 930 27	...	1
	06.0587	Carburettor complete (right hand) less cables 930 28	...	1
C10	0930 002	Body only (left hand)	...	1
C12	0930 00	Body only (right hand)	...	1
C01	622-050	Float chamber body	...	1
C11	928-060	Throttle valve—size J	...	1
C10	928-067	Air valve	...	1
C5	928-064	Mixing chamber top	...	1
C7	622-131	Throttle valve spring	...	1
C8	622-065	Air valve spring	...	1
C19	622-067	Throttle needle tip	...	1
C9	622-124(1)	Throttle needle	...	1
C18	622-068	Float needle	...	1
C19	622-069	Float	...	1
C25	622-071	Float spindle	...	1
C20	622-073	Float chamber washer	...	1
C27	622-076	Pilot air adjuster screw	...	1
C26	622-077	Throttle stop	...	1
C24	622-078	Barja bolt	...	1
C15	622-122	Needle jet	...	1
C16	622-125	Jet holder	...	1
C17	376-100	Main jet	...	1
C14	124-176	Pilot jet	...	1
	622-101	Flange "O" ring	...	1
	14-032	Tickler spring	...	1
C3	622-186	Float chamber, mixing chamber top screw	...	4
C23	376-097	Ratio union	...	4
C28	622-082	"O" ring	...	2
C2	5-077	Cable adjuster lock nut	...	4
C1	4-035	Cable adjuster	...	4
	622-089	Tickler stem	...	2
	622-081	Tickler head	...	2

EXHAUST PIPE

A34	06.0670	Exhaust pipe bare (left)	...	1
	06.0621	Exhaust pipe bare (right)	...	1
	78092	Exhaust pipe lock ring	...	2
	1.2166	Exhaust pipe lock ring washer	...	2

SILENCERS

23768	Silencer left hand	...	1
23767	Silencer right hand	...	1
16755	Silencer clip	...	2
06.0727	Silencer clamping bolt	...	2
000011	Silencer clamping bolt washer	...	4



Annal concentric carburettor

- 1 Cable adjuster
- 2 Cable-adjuster locknut
- 3 Float-chamber and mixing-chamber-top securing screws
- 4 Cable ferrules
- 5 Mixing-chamber top for adjuster and ferrule
- 6 Mixing-chamber top (standard)
- 7 Throttle-valve spring
- 8 Air-valve spring
- 9 Throttle needle
- 10 Air valve
- 11 Throttle valve
- 12 Carburettor body
- 13 Air- intake ribs
- 14 Pilot jet
- 15 Needle jet
- 16 Jet holder
- 17 Main jet
- 18 Float needle
- 19 Float
- 20 Float-chamber washer
- 21 Float-chamber body
- 22 Filter
- 23 Danjo union
- 24 Danjo bolt
- 25 Float spindle
- 26 Throttle-stop adjusting screw
- 27 Pilot-air adjusting screw
- 28 'O' Rings
- 29 Needle clip
- 30 Mixing-chamber top for two ferrules
- 31 Plug for mixing-chamber top
- 32 'O' ring for flange sealing

C CARBURETTOR

Plate No.	Part No.	Description	Qty.	B.N. No.
SILENCERS—continued				
	06.0348	Silencer clamping bolt nut	2	
J24	06.0563	Silencer stay left hand	2	
J26	06.0564	Silencer stay right hand	2	
	13053	Silencer stay bolt	4	
	18202	Silencer stay bolt washer	4	
J34	06.0863	Silencer bolt (bracket to frame)	2	
J33	00010	Silencer bolt washer	4	
J32	06.0029	Silencer bolt nut	2	
J25 J31	06.0622	Silencer rubber mounting	4	
J27 J30	000311	Silencer rubber mounting washer	4	
J28 J29	06.0348	Silencer rubber mounting nut	8	
	F 1731	Silencer stay bolt nut	4	

CHAINS

06.0366	Front chain	1
017376	Rear chain (19 teeth sprocket)	1
18257	Contact breaker chain	1
17836	Camshaft chain	1
333156	Rear chain (21 teeth sprocket)	1

GEARBOX FIXING PARTS

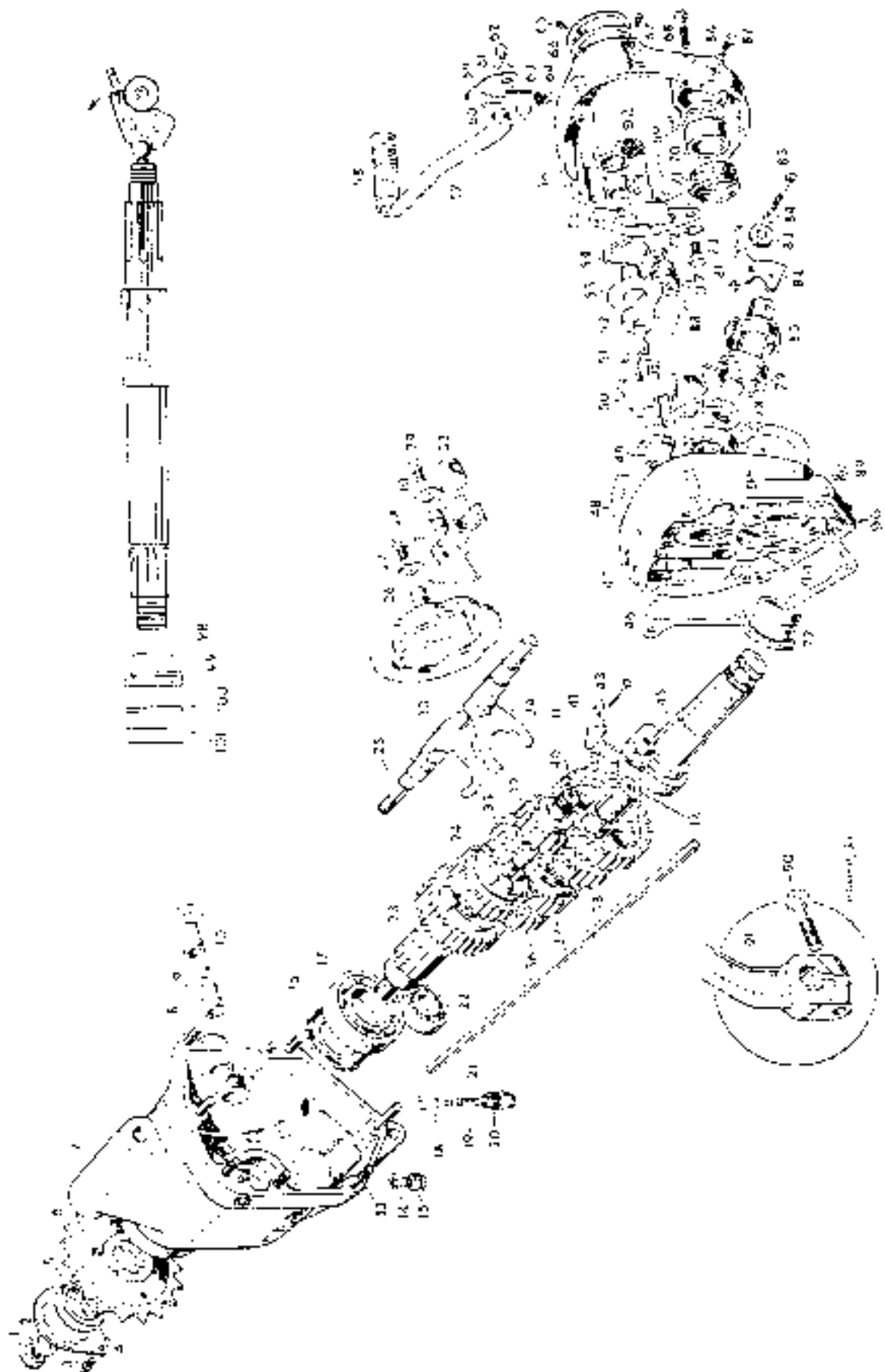
14367	Fixing bolt top	1
030023	Fixing bolt top washer	1
06.0420	Fixing bolt top nut	1
06.0597	Pivot stud	1
030008	Pivot stud washer	2
06.0625	Pivot stud nut	2
16997	Gearbox adjuster	2
E.3221	Gearbox adjuster nut	1
D2.0595	Gearbox adjuster crosshead	2
000010	Gearbox adjuster crosshead washer	1
06.0027	Gearbox adjuster crosshead nut	1

GEARBOX SHELL

D7	06.0543	Gearbox complete (less clutch and kickstart)	1
D47	040467	Shell with two bushes and studs	1
D56	06.0740	Kickstart case (inner)	1
D46	040010	Kickstart cover (outer)	1
D48	040035	Inner case gasket	1
D15	040.38	Outer cover gasket	1
D14	000300	Drain plug	1
D87	040137	Drain plug washer	1
D86	000293	Oil level plug	1
D66	041104	Oil level plug washer	1
D67	040057	Inspection cover	1
D65	000450	Inspection cover gasket	1
D13	000377	Inspection cover screw	2
D9	040054	Kickstart-case dowel	2
D39	000271	Kickstart-case stud	2
D68	000004	Kickstart-case stud nut	5
	000377	Kickstart-cover dowel	7
	000482	Kickstart-cover cover	2
		Kickstart-cover screw	5

GEARS AND SHAFTS

D11	06.0354	Gearbox mainshaft	1
D12	040025	Gearbox layshaft	1
D23	040422	Main gear with bushes	1
D39	040026	Mainshaft first gear	3
D35	040418	Mainshaft second gear	3
D24	040013	Mainshaft third gear	3
D40	040115	Layshaft first gear	1
D38	040019	Layshaft second gear	1
D37	040420	Layshaft third gear	1
D36	040284	Layshaft top gear pinion	1
	040062	Main driving gear bush	1
	040048	Mainshaft second gear bush	2
	040047	Layshaft third gear bush	1
	040046	Layshaft first gear bush	1



D GEARBOX

Plate No.	Part No.	Description	Qty.	Bin No.
-----------	----------	-------------	------	---------

GEARBOX BEARINGS AND SEALS

D17	040098	Main gear ball bearing	1	
D73	040099	Main shaft ball bearing in kickstart case	1	
D12	040100	Layshaft ball bearing in shell	1	
D9	040056	Cam plate/quadrant bush in shell	1	
D 6	040132	Main gear bearing oil seal	1	
D10	040429	Quadrant and cam plate "O" ring seal	1	
D77	040473	Kickstart spindle bush in kickstart case	1	
D49	040061	Footchange spindle bush in kickstart case	1	
D70	040472	Kickstart spindle bush in cover	1	
D93	040061	Footchange spindle bush in cover	1	
D51	040079	Ratchet spindle "O" ring	1	
D92	040006	Footchange spindle and pawl carrier "O" ring	1	
D69	040005	Kickstart "O" ring	1	

GEARBOX SPROCKET

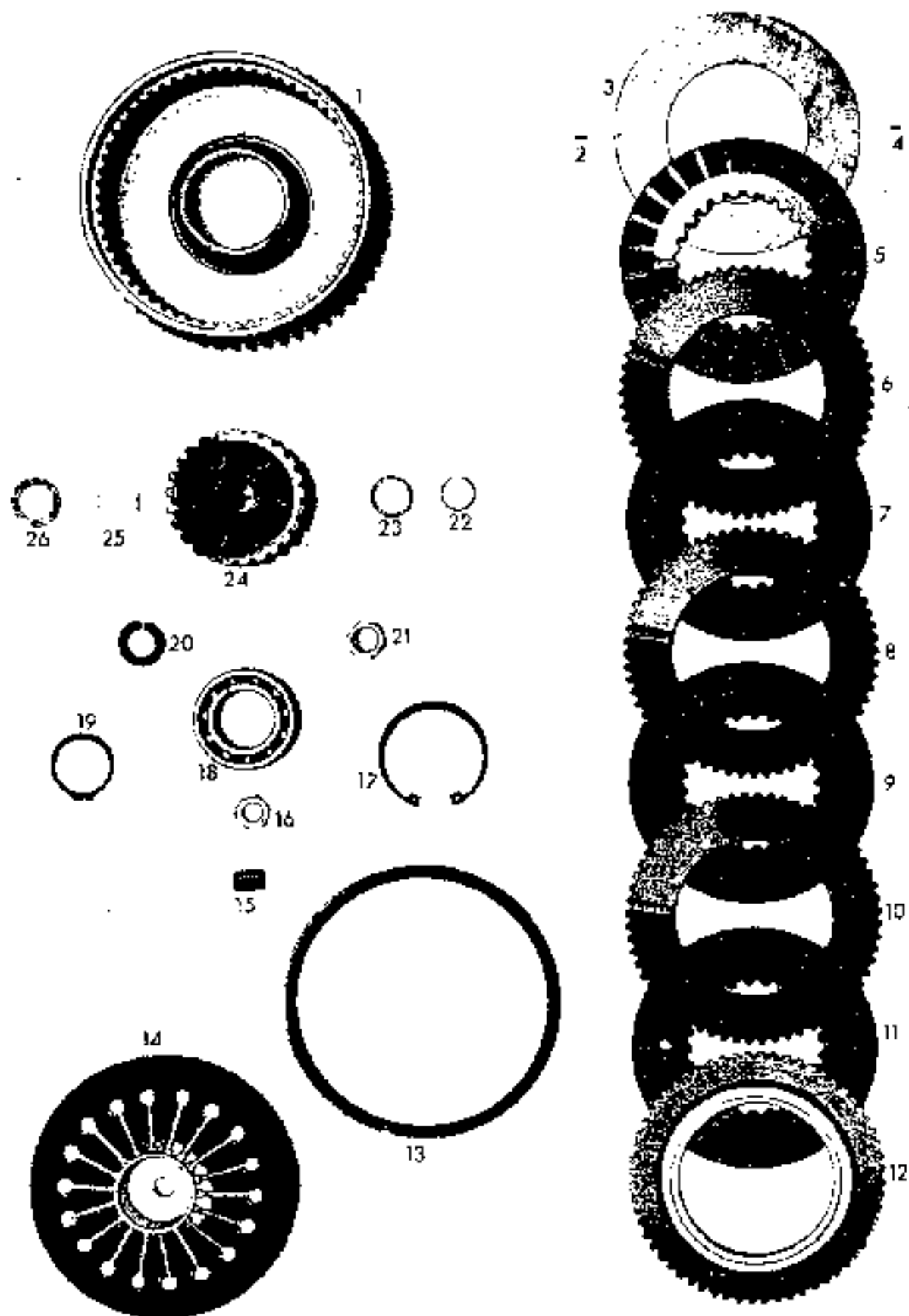
D6	040483	Gearbox sprocket (final drive) 19 teeth	1	
D5	06 0121	Gearbox sprocket (final drive) 21 teeth	1	
	040 31	Gearbox sprocket spacer	1	
D5	040070	Gearbox sprocket nut	1	
D4	040075	Gearbox sprocket lock washer	1	
D3	030450	Gearbox sprocket lock washer screw	1	

GEAR CHANGE

D25	0400 8	Cam plate only	1	
	0400 9	Spindle only	1	
D31	040109	Quadrant assembly	1	
D27 D30	000174	Washer for cam plate and quadrant spindle	1	
D29 D28	040136	Screw for cam plate and quadrant spindle	1	
D44 D33	040022	Selecter fork	1	
D25	040035	Selecter fork shaft	1	
D50	040111	Ratchet gear assembly	1	
D32	040078	Knuckle pin roller	1	
D98	040039	Gear change pawl spring	1	
D52	040110	Pawl carrier assembly	1	
	040002	Pawl carrier only	1	
	040067	Pawl carrier pin	1	
D97	040024	Footchange pawl	1	
D74	040049	Circlip for pawl	1	
	040066	Ratchet spindle	1	
D54	040475	Gear change return spring	1	
D53	040135	Return spring washer	1	
D55	040052	Gear change stop plate	1	
D73	041406	Stop plate screw	1	
D72	0 41 7	Stop plate screw spring washer	1	
D57	06.0929	Footchange pedal	1	
D58	040086	Footchange pedal rubber	1	
D60	040105	Footchange pedal bolt	1	
D61	045062	Footchange pedal bolt washer	1	
D64	000005	Footchange pedal hinge nut	1	
D59	040051	Gear indicator	1	
D62	040137	Gear indicator screw	1	
D61	000012	Indicator screw washer	1	
D18	040034	Cam plate plunger	1	
D19	040442	Cam plate plunger spring	1	
D20	040036	Cam plate plunger bolt	1	

CLUTCH

	06.0741	Clutch complete	1	
E1	06.0742	Clutch sprocket	1	
E3	06.0744	Clutch back plate	1	
E5 7 9 11	06.0749	Clutch friction plate bonded	1	
F6 8 10	06.0746	Clutch plain plate	1	
E12	06.0745	Clutch pressure plate	1	
E14	06.0770	Clutch spring and clutch spring centre assembly	1	
E13	06.0308	Clutch adjuster	1	
E16	06.0035	Clutch adjuster nut	1	
F24	06.0741	Clutch centre	1	
E21 D1	040373	Clutch retaining nut	1	
E20 D2	040374	Clutch retaining washer	1	
E22 D98	06.0752	Clutch locating circlip	1	
E23 D99	06.0747	Clutch locating spacer	1	



E CLUTCH

Plate No.	Part No.	Description	Qty.	Bin No.
-----------	----------	-------------	------	---------

CLUTCH continued

EES D101	06 0854	Clutch shim 032 m	...	AR
F26 D100	06.0895	Clutch shim 048 m	...	AR
E18	06 0750	Clutch bearing	...	1
E 9	06 0751	Clutch bearing circlip inner	...	1
E17	06.0754	Clutch bearing circlip outer	...	1
E13	06.0751	Clutch spring circlip	...	1
E1 E4	06.0756	Drive pin (back plate to sprocket)	...	2

CLUTCH OPERATING PARTS

D21	040084	Clutch rod	...	1
D32	06 0715	Operating lever	...	1
D79	040057	Operating lever body	...	1
D80	040063	Operating body locking ring	...	1
D78	040031	Operating ball	...	1
D83	040060	Operating roller	...	1
D84	040065	Roller sleeve	...	1
D85	000457	Roller screw	...	1
D8	01.816	Roller screw nut	...	1

KICKSTART

D95	040477	Kickstart axle with bush	...	1
	040146	Kickstart axle bush	...	1
D41	040007	Axle pawl	...	1
D41	040033	Pawl pin	...	1
D44	040044	Pawl spring	...	1
D43	040065	Pawl plunger	...	1
D94	040043	Axle stop	...	1
D95	040071	Axle cam	...	1
D96	040041	Axle cam rivet	...	1
D96	040474	Axle stop rivet	...	1
D76	040023	Mainshaft with kickstart end	...	1
	06 0559	Kickstart crank assembly - folding type	...	1
D91	06 0458	Kickstart crank only - folding type	...	1
	031318	Kickstart pedal rubber	...	1
	042434	Folding crank pedal pin	...	1
	06 0552	Pedal pin coated nut	...	1
	040433	Pedal pin spring washer	...	1
	000070	Pedal pin pin washer	...	1
L90	06 0599	Crank-to-axle clamping bolt	...	1
D7	040475	Kickstart crank return spring	...	1

FRAME

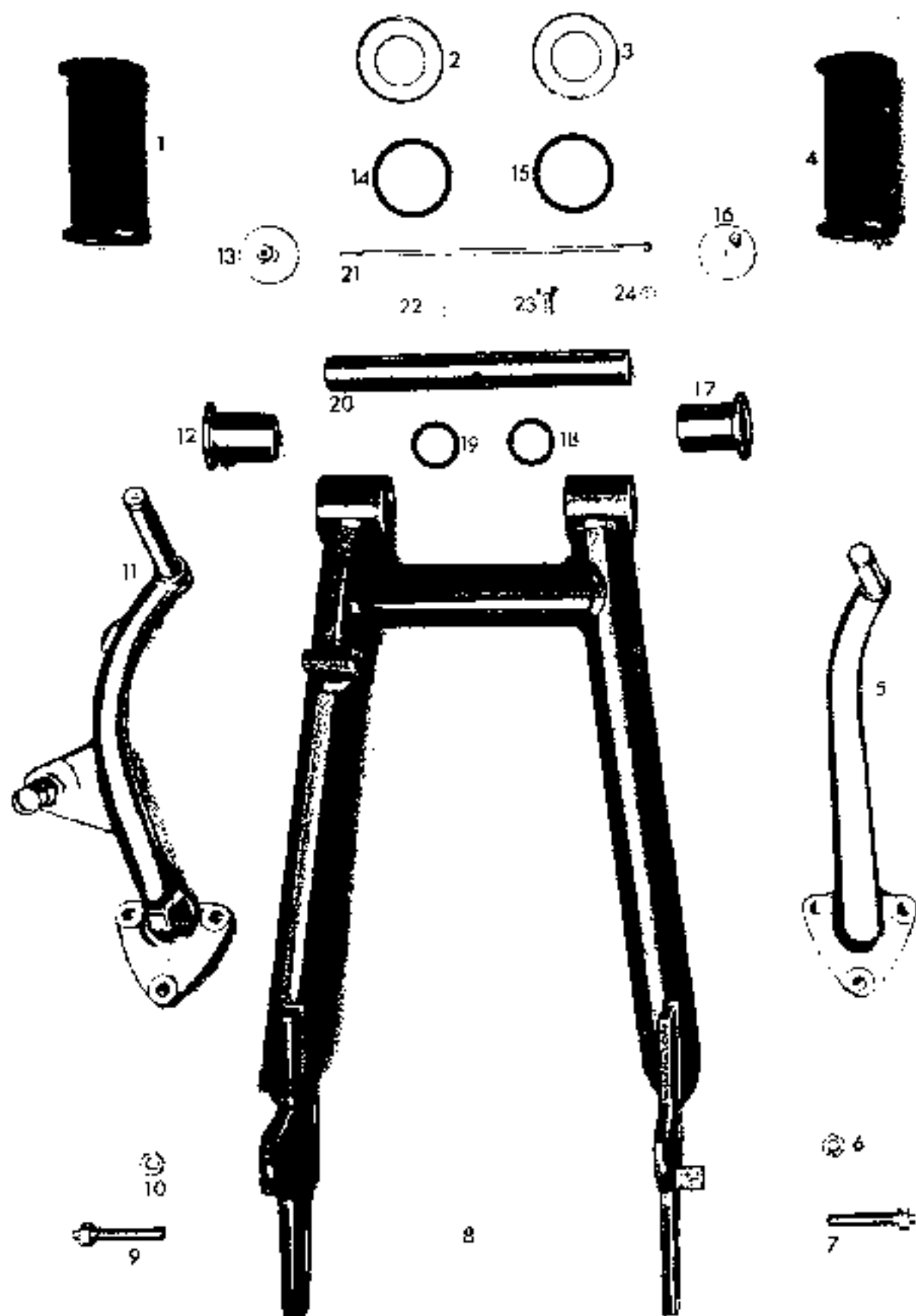
06 0406	Frame	1
---------	-------	-----	-----	---

SWINGING ARM

F8	06.044	Swinging arm only	...	1
F2 F1	06.087	Bearing cap washer	...	1
	000051	Grease nipple	...	1
F23	06 0327	Oil screw plug	...	1
F22	000012	Oil screw plug washer	...	1
F13	06 0869	Bearing end cap left hand	...	1
F16	06 0868	Bearing end cap right hand	...	1
F18 F19	06 0448	Bearing end cap "O" ring	...	2
F21	06 0873	Bearing cap rod assembled	...	1
F17 F17	06.0447	Swinging arm bearing	...	2
F20	06 0453	Swinging arm spindle	...	1
	06 0446	Swinging arm bearing cover	...	1
F14 F13	06 0449	Swinging arm bearing "O" ring (flange)	...	2
F7 F9	06.0630	Rear chain adjuster	...	2
FA F10	06.0631	Rear chain adjuster nut	...	2

REAR SUSPENSION UNITS

06.0461	Rear suspension unit	2
06.0465	Rear suspension unit top bolt	4
000010	Rear suspension unit top bolt washer	2
06.0029	Rear suspension unit top bolt nut	2
06 0463	Rear suspension unit bottom bolt	2
23298	Rear suspension unit bottom bolt washer	2
22526	Rear suspension unit bottom bolt washer	2
06 0029	Rear suspension unit bottom bolt nut	2



F SWINGING ARM

Plate No.	Part No.	Description	Qty.	Bin No.
-----------	----------	-------------	------	---------

CENTRE STAND

	06.0589	Centre stand ...	1	
	06.0529	Centre stand bush	2	
	000009	Centre stand washer	4	
	06.0630	Centre stand bolt	2	
	06.0631	Centre stand bolt nut	2	
	06.0588	Centre stand spring	1	

PROP STAND

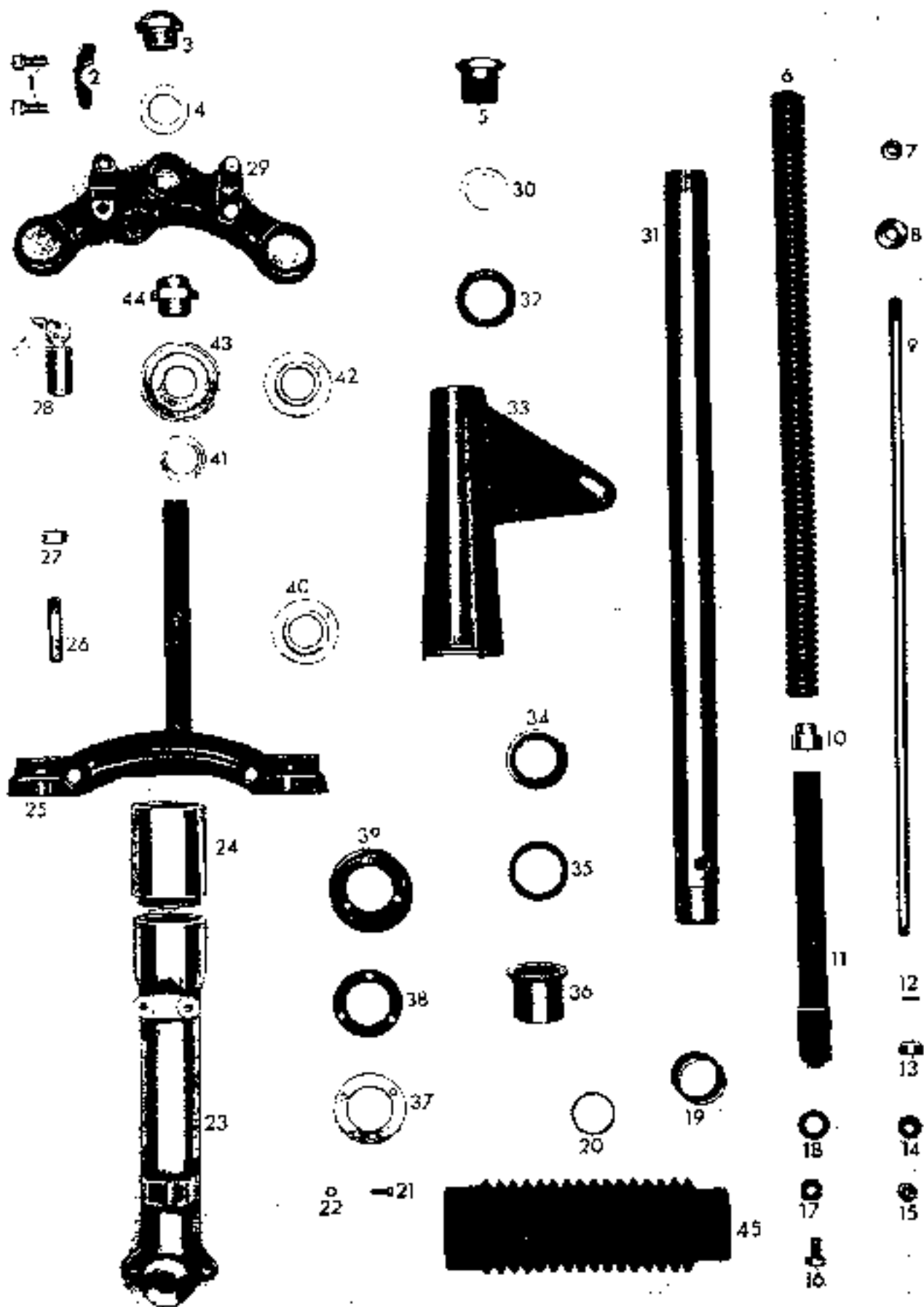
	06.0766	Prop stand leg	1	
	033278	Prop stand pivot	1	
	033279	Prop stand pivot circlip	2	
	06.0765	Prop stand clip lug	1	
	06.0779	Prop stand clip lug stud	1	
	36.0348	Prop stand clip lug stud nut	2	
	000011	Prop stand clip lug stud washer	2	
	36.0768	Prop stand spring	1	

FOOTRESTS

	06.0944	Footrest support plate left hand	1	
	06.0945	Footrest support plate right hand	1	
	06.0471	Footrest support spacer	4	
	06.0472	Footrest support spacer	2	
	06.0858	Footrest support bolt	2	
	000010	Footrest support bolt washer	4	
	06.0029	Footrest support bolt nut	2	
F11	06.0475	Footrest left hand	1	
F5	06.0473	Footrest right hand	1	
	06.0626	Footrest fixing stud	5	
	000011	Footrest fixing stud washer	5	
	06.0348	Footrest fixing stud nut	6	
F1, F4	9983	Footrest rubber	2	
	19984	Footrest spigot	1	

FRONT FORKS

	06.0990	Fork complete...	1	
G29	06.0335	Handlebar lug	1	
G2	1502.A	Handlebar lug clip	2	
G7	06.0333	Handlebar lug clip allen screw	4	
G25	06.0344	Fork crown	1	
	030517	Transfer "Made in England"	1	
G42	030098	Hand bar lug ball race	1	
	030097	Frame ball race top	1	
	030097	Frame ball race bottom	1	
G40	030098	Fork crown ball race	1	
	000021	Steering bal	1	
G41	17429	Ball race washer	36	
G43	15428	Ball race dust cover	2	
G44	06.0341	Head nut	1	
G1	15627	Head nut washer	1	
G3	06.0340	Head nut top	1	
G26	06.0316	Fork crown pinch stud	2	
G27	06.0317	Fork crown pinch stud nut	2	
G5	06.0345	Inner tube top bolt	2	
G30	1.320	Inner tube top bolt washer	2	
G33	031544	Top cover tube left hand	1	
	031545	Top cover tube right hand	1	
G32	T.597	Top cover tube spigot rubber	2	
	75.17	"Roadholder" transfer	2	
G39	030531	Bottom cover tube	2	
G38	06.0760	Bottom cover tube seal	2	
G37	06.0762	Bottom cover tube washer	2	
G21	000451	Bottom cover tube screw	2	
G22	000190	Bottom cover washer	6	
G24	06.0350	Slider extension	6	
	06.0351	Slider left hand	2	
G23	06.0352	Slider right hand	1	
	06.0354	Slider drain plug	2	
	000103	Slider drain plug washer	2	
	06.0353	Slider pinch stud	1	
	06.0348	Slider pinch stud nut	1	
G11	06.0299	Damper tube	2	



G FORKS

Part No.	Part No.	Description	Qty.	Std. No.
FRONT FORKS—continued				
G16	06.0359	Damper tube anchor bolt	1	
G17	T.1009	Damper tube anchor bolt washer	1	
G18	T.814	Damper tube anchor bolt washer	1	
G.0	06.0360	Damper tube cap	1	
G9	06.0346	Damper rod	1	
G7	06.0347	Damper rod fork nut...	1	
G.3	141168	Damper valve	1	
G12	14117	Damper valve stop pin	1	
G14	330584	Damper valve seat	1	
G15	06.0349	Damper valve seat nut	1	
G3.	06.0302	Main fork tube	1	
G34	17713	Main fork tube oil seal	1	
G35	T.1045	Main fork tube oil seal washer	1	
G36	T.1055	Main fork tube guide bush	1	
G19	T.1014	Main fork tube bush bottom	1	
G20	14298	Main fork tube bush top	1	
G6	15913	Fork spring	1	
G8	35003	Fork spring loading bush	1	
G45	030463	Fork gauge	1	
G28	030175	Bushing lock washer & seal	1	

HANDLEBAR

H2	06.0709	Handlebar (Export)	1	
	06.0764	Handlebar (Home)	1	

FRONT MUDGUARD

	06.0584	Front mudguard (Home)	1	
	04.0583	Front mudguard (Export)	1	
	06.0156	Front mudguard bridge stud (Sliding)	1	
	007072	Front mudguard bridge stud washer	4	
	06.0355	Front mudguard bridge stud nut	4	
	06.0619	Front mudguard stay, front	1	
	06.0629	Front mudguard stay, rear	1	
	06.0337	Front mudguard stay bolt slider	1	
	000071	Front mudguard stay washer	1	
	06.0677	Front mudguard stay bolt to mudguard	1	
	000039	Front mudguard stay bolt washer	1	
	000150	Front mudguard stay bolt washer	1	
	06.0678	Front mudguard stay bolt nut	1	

REAR MUDGUARD

	06.0307	Rear mudguard	1	
	00002	Rear mudguard fixing bolt washer	1	
	06.0403	Rear mudguard fixing bolt nut	1	
	06.0652	Rear mudguard-horn bracket bolt	1	
	06.0862	Rear mudguard-horn bracket bolt nut	1	

FRONT NUMBER PLATE

	011835	Front number plate	1	
	18755	Front number plate brace	1	
	011836	Front number plate stranchion	1	
	000042	Front number plate stranchion washer	1	
	000005	Front number plate stranchion nut	1	
	000061	Front number plate screw	2	

REAR NUMBER PLATE

	05.0646	Rear number plate	1	
	04.0317	Rear number plate bracket bolt	1	
	300012	Rear number plate bracket bolt washer	1	
	333057	Rear number plate bracket bolt nut	1	
	06.0644	Number plate faring	1	
	071503	Side reflector (rear)—Red	1	
	034013	Side reflector (front)—Amber (Export only)	1	
	06.0890	Side reflector (front) marker (Export only)	1	
	05.0643	Number plate faring spacer	1	
	05.0909	Rear lamp screw	2	

Part No.	Part No.	Description	Qty.	Bin No
----------	----------	-------------	------	--------

HAND BRAKE AND AIR LEVER

H4	06.0690	Front brake and air lever assembly	1	
H5	18-754	Front brake lever only	1	
H26	06.0061	Front brake lever body	1	
H22	18-087	Lever pivot screw	1	
H21	18-052	Pivot screw nut	1	
H19	12-356	Air lever only	1	
H7	12-619	Air lever body	1	
H38	12-607	Air lever central body	1	
H29	12-606	Air lever cap	1	
H8	12-032	Air lever spring washer	1	
H25	11-013	Body clamping screw	1	
H27	11-014	Body clamping screw	1	
	033707	Brake lever trunnion	1	
H15	18-1003	Adjuster for cable	1	
H17	18-1066	Nut for adjuster	1	

CLUTCH LEVER

H24	06.0091	Clutch lever assembly	1	
H23	18-752	Lever only	1	
H16	06.0062	Body only	1	
H22	18-087	Lever pivot screw	1	
H21	18-052	Pivot screw nut	1	
H19	12-355	Lever body clamp	1	
H20, H16	11-014	Body clamp screw	2	
	033707	Clutch lever trunnion	1	
H15	18-1003	Adjuster for cable	1	
H17	18-1066	Nut for adjuster	1	

TWIST GRIP

H13	016658	Twist grip assembled	1	
H14	16-060	Body (top half)	1	
H13	16-061	Body (bottom half)	1	
H10	16-091	Rotor only	1	
H12	11-013	Clamping screw—long	1	
H11	11-014	Clamping screw—short	1	
	16-008	Friction spring	1	
	16-009	Friction spring screw	1	
	16-010	Screw lock nut	1	
H10	16-070	Plastic rotor grip	1	
H1	16-069	Plastic dummy grip	1	
H1	033740	Dummy grip	1	
H30	036476	Slotted abutment	1	

BRAKE CABLE

	06.0924	Front brake cable assembled (Home)	1	
	06.0918	Front brake cable assembled (Export)	1	
O13	06.0492	Rear brake cable assembled	1	

CLUTCH CABLE

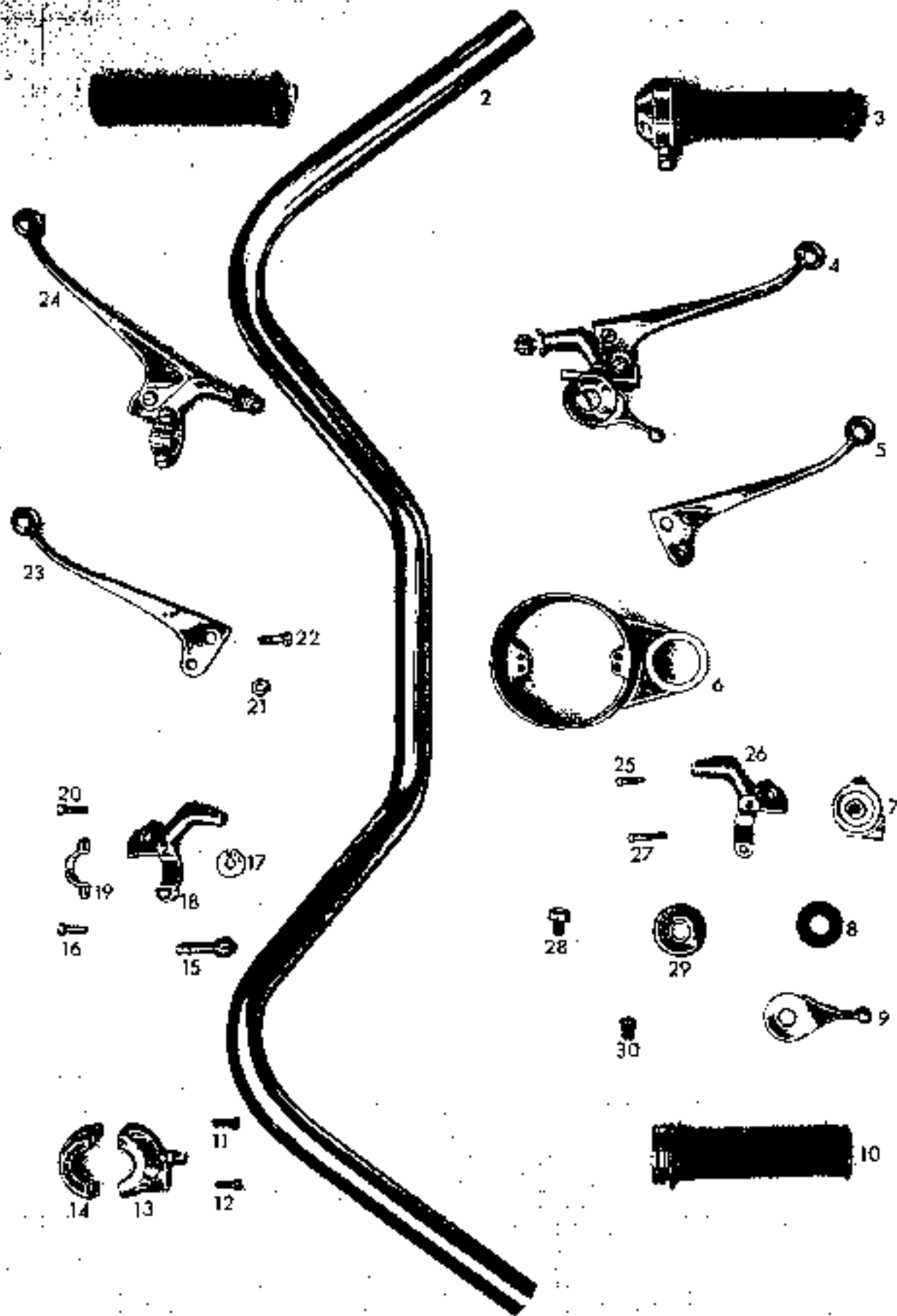
	06.0930	Clutch cable assembled (Home)	1	
	06.0919	Clutch cable assembled (Export)	1	

AIR CABLE

	031614	Air cable—handlebar end (Home)	1	
	06.0908	Air cable—handlebar end (Export)	1	
	033144	Air cable—carburettor end	2	
	018956	M u-way adjuster	1	
	019824	Junction box for control cables	1	

THROTTLE CABLE

	06.0923	Throttle cable—handlebar end (Home)	1	
	031612	Throttle cable—handlebar end (Export)	1	
	033145	Throttle cable carburettor end	2	
	018956	M u-way adjuster	1	
	019824	Junction box for control cables	1	



H CONTROL LEVERS

Part No.	Part No.	Description	Qty.	Bin No.
OIL PIPES				
J37	06 0638	Joint on block and oil pipes	1	
J35	032044	Joint on block gasket	1	
	030448	Joint on block bolt	1	
J4	020950	Oil feed hose—3½ in.	1	
	020950	Oil return hose—4½ in.	1	
J2, J4	023276	Oil feed and return hose ferrule	4	
	13766	Oil return pipe adaptor washer	2	
	21267	Joint on block cover...	1	
J38	06 0572	Oil feed pipe filter assembled	1	
J19	E 6540	Oil feed pipe filter washer	1	
J1	06 0394	Rocker box oil feed pipe	1	
J36, J40	19101	Rocker box oil feed pipe banjo bolt	3	
J5	T 1054	Rocker box oil feed pipe banjo bolt washer	6	
J5	018153	Rocker box oil feed pipe clip	1	

TWIN SEAT

	06 0911	Dual seat	1	
	06 0913	Dual seat (Orange)	1	
	06 10305	Dual seat (White)	1	
O 6	06 0695	Dual seat fixing nut pin	2	
	06 0647	Dual seat fixing nut	2	
	E 6742	Dual seat bracket support washer	4	
	11852	Dual seat rubber button	4	

PETROL TANK

	06 0496	Petrol tank	1	
	029195	Reserve transfer	1	
	06 0681	Petrol tank filler cap	1	
	06 0382	Petrol tank filler cap pin	1	
J9	031153	Petrol tap (main)	1	
J41	05 746	Petrol tap (reserve)	1	
	020183	Petrol tap washer	2	
J7	020954	Petrol pipe left hand 4 in.	2	
	9402	Petrol pipe right hand 3½ in.	2	
I6	021644	Petrol pipe "T" piece	2	
J44	19452	Petrol pipe to "T" piece 3½ in.	2	
J 3, J42	06 0575	Petrol pipe ferrule	10	
	02017	Petrol pipe nipple	2	
	020513	Petrol pipe union nut	2	
	06 0493	Petrol tank mounting rubber strap	1	
	06 0648	Petrol tank bolt rubber	6	
	06 0757	Petrol tank bolt nut	1	
	027138	Petrol tank support rubber	1	
	014959	Petrol tank bolt washer	3	
	06 0499	Petrol tank badge	1	
	06 0520	Petrol tank badge adhesive	2	

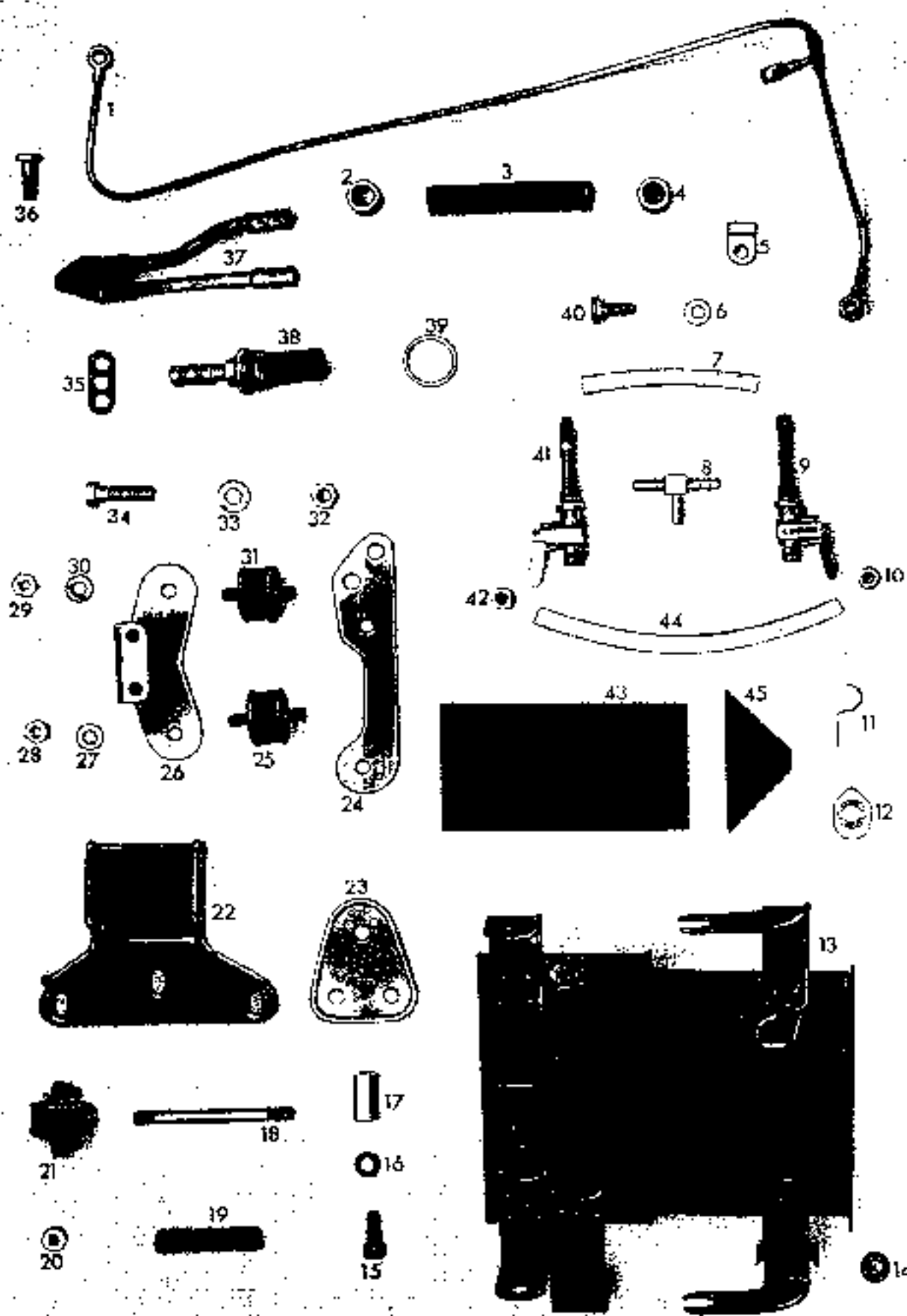
COLOUR MUST BE QUOTED WHEN ORDERING PETROL TANKS

OIL TANK

N2	06 0311	Oil tank only	1	
N1	025352	Filler cap	1	
N15	06 0658	Oil tank drain plug	1	
N15	009200	Oil tank drain plug washer	1	
N5	020953	Oil level indicator hose—22 in.	1	
N4, N16	06 0576	Oil level indicator hose ferrule	2	
	06 0955	Oil tank filling transfer	1	
N3	06 0636	Oil tank rubber mounting (stud)	2	
	033057	Oil tank rubber mounting nut	2	
	020012	Oil tank rubber mounting washer	4	
	06 0916	Bolt spacer	1	
N14	06 0811	Oil tank mounting rubber grommet	1	
	19629	Oil tank breather pipe, tank to air filter 7½ in.	1	

CHAIN OILER

O 7	06 0895	Chain oiler regulator	1	
	06 0931	Chain oiler bracket	1	
	06 0460	Chain oiler bracket spacer	2	
	2358C	Chain oiler hose, tank to regulator 14 in.	1	
O 6	2358C	Chain oiler hose regulator to bracket 12 in.	1	
O22	77580	Chain oiler hose bracket to chain 5 in.	1	



I OIL PIPES

Plate No.	Part No.	Description	Qty.	Bin No.
-----------	----------	-------------	------	---------

CHAIN OILER—continued

	025392	Beading in chainguard 1 in.	1	
Q25 Q27	06 0884	Chain oiler regulator end assembled	2	
Q26	06 0887	Chain oiler regulator fair	1	
Q28	030897	Chain oiler regulator hose 3 in.	1	
Q23 Q24	06 0886	Chain oiler regulator hose clip	2	
Q29	06.0920	Chain oiler hose clip (1/8 in. dia.)	4	
Q30	06.0921	Chain oiler hose clip (1/8 in. dia.)	1	

PILLION FOOTRESTS

	06.0616	Pillion footrests bare	2	
	06 0617	Pillion footrest bolt	2	
	032257	Pillion footrest bolt nut	2	
	042569	Pillion footrest rubber	2	
	06 0487	Pillion footrest lug	2	
	06 0618	Pillion footrest lug bolt	2	
	030310	Pillion footrest lug bolt washer	2	
	06.1559	Pillion footrestassy. pairs	1	

FRONT CHAINCASE

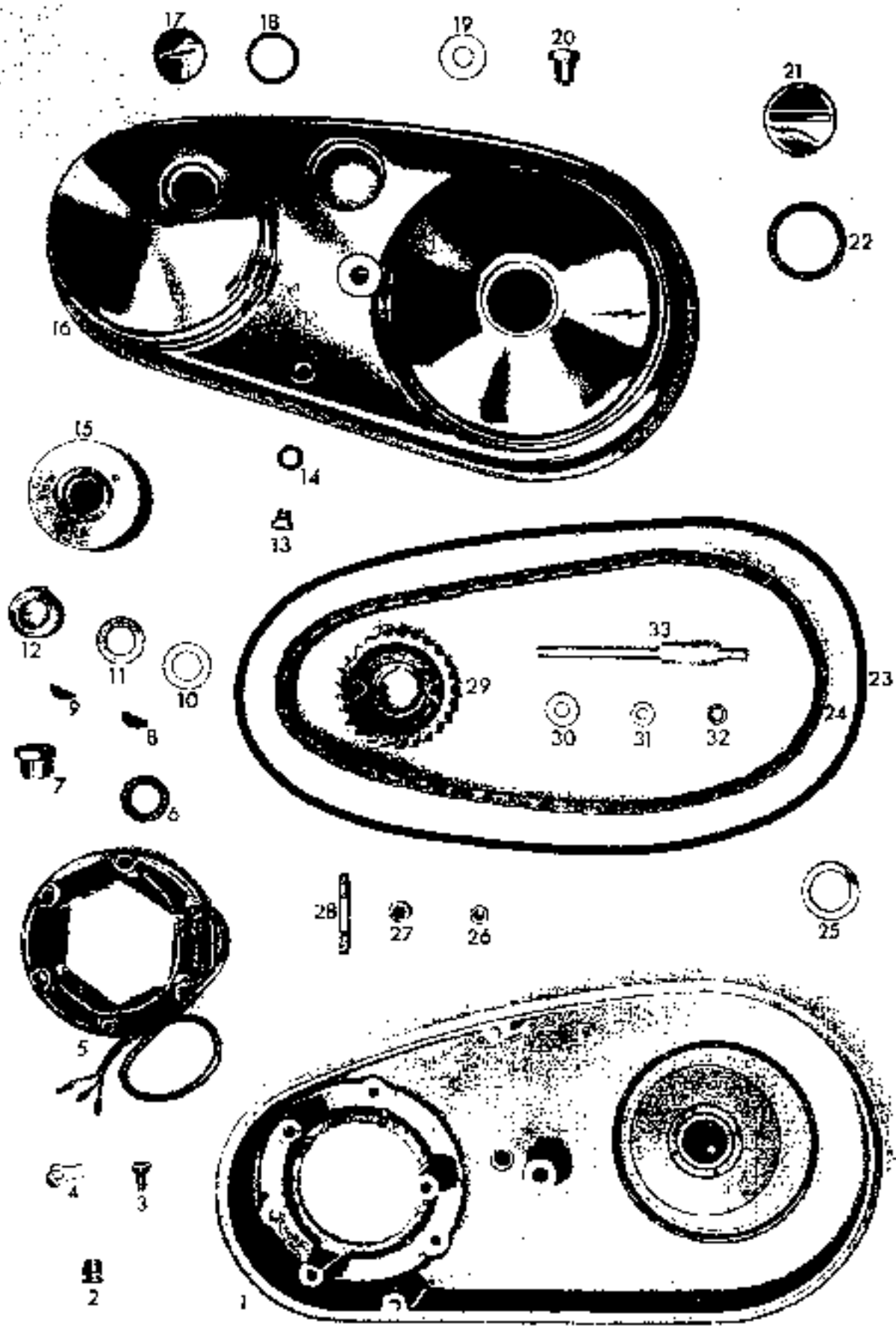
	06.0371	Chaincase-crankcase gasket	1	
	06.0626	Chaincase assembled	1	
K1	06 0374	Chaincase inner half	1	
K25	0 2443	Bolt washer	2	
K3	06.0373	Chaincase fixing bolt	3	
K19	06.0368	Chaincase centre bolt washer	1	
K20	06.0367	Chaincase centre bolt nut (chromed)	1	
K23	06 0376	Chaincase centre stud	1	
K31	000010	Chaincase centre stud washer	2	
K32	06 0397	Chaincase centre stud nut	1	
K30	06 0395	Chaincase centre stud spacer	AR	
K26	06.0370	Chaincase outer half	1	
K23	06 0396	Chaincase Land rubber	1	
K17	06 0459	Chaincase inspection cap (ignition timing)	1	
K21	06 0386	Chaincase inspection cap	2	
K22	042025	Chaincase inspection cap gasket	2	
K13	00942	Chaincase inspection cap gasket	1	
	06.0662	grip on mainstay plate	1	
K15	06.0389	Chaincase oil level bolt	1	
K14	000030	Chaincase oil level bolt washer	1	
	06 0363	Ignition indicator plate fixing screw	2	
K4	06 0392	Chaincase fixing plate	3	

REAR CHAINGUARD

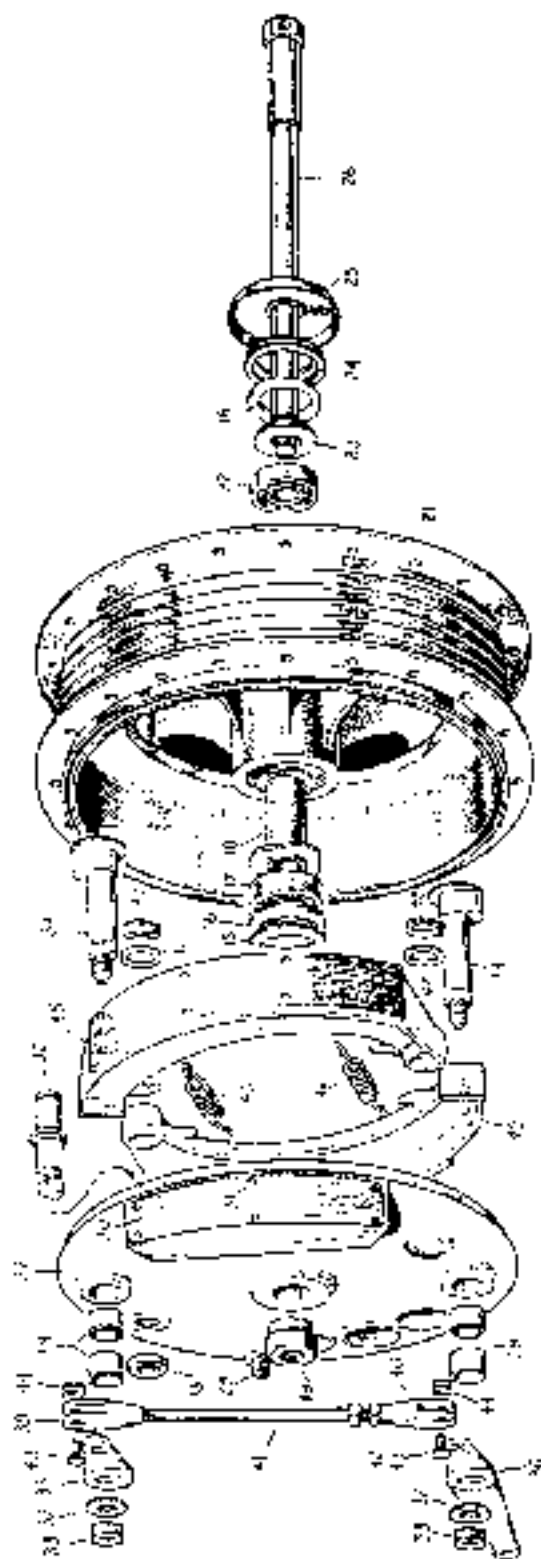
Q1	06 0456	Rear chainguard	1	
Q5	06 0459	Rear chainguard front bolt	1	
Q6	030312	Rear chainguard front bolt washer	2	
Q7	032057	Rear chainguard front bolt nut	1	
Q12	06.0643	Rear chainguard extension	1	
Q10	06 0459	Rear chainguard rear bolt	1	
Q9	030312	Rear chainguard rear bolt washer	2	
Q6	032257	Rear chainguard rear bolt nut	1	

BATTERY BOX AND CARRIER

	033057	Battery carrier bolt nut	1	
	06.0327	Battery earth bolt	1	
	000012	Battery earth bolt washer	1	
143	06 0533	Battery carrier rubber pad	1	
145	06.0867	Battery carrier rubber side pad	2	
	06 0533	Battery carrier rubber rear pad	1	
	06.0568	Battery strap assembled	1	
113	06.0615	Battery tray assembled	1	
	06.0858	Battery tray bolt (to frame)	2	
	000010	Battery tray bolt washer	4	
	06.0029	Battery tray bolt nut	2	
111	06.0927	Chain oiler clip (battery tray)	2	
	06.0677	Chain oiler and harness clip bolt	1	
	000039	Chain oiler and harness clip washer	2	
	06.0678	Chain oiler and harness clip nut	1	



K CHAINCASE



L FRONT WHEEL

Plate No.	Part No.	Description	Qty.	Bin No.
FRONT WHEEL				
	06 0984	Wheel complete—less tyre and tube	1	
	06 0985	Wheel bare less fittings	1	
	4230	Rim only WM2-19	1	
	20063	Spoke	20	
	20064	Spoke	20	
	021693	Spoke nipple	40	
L21	06 0364	Front hub shell only	1	
L17	17721	Bearing right hand	1	
L22	040100	Bearing left hand	1	
	16763	Bearing spacer	1	
L24	06 0363	Bearing lock ring	1	
L16	E.6885	Bearing felt washer	1	
L23	E.6889	Bearing felt washer retaining ring	2	
L15	19714	Oil retaining washer	1	
L25	18531	Dust cover	1	
L18	15646	Bearing spacer assembled	1	
L26	05 0362	Front wheel spindle	1	
L49	06 0361	Front wheel spindle nut	1	
L27	06 0050	Front wheel cover plate	1	
	F 59-44A	Brake plate packing washer	1	
L34	06 0009	Brake expander	2	AK
L45	06 0006	Brake shoe with linings	2	
	06 0612	Brake shoe lining only	2	
	000113	Brake shoe lining rivet	2	
L46	06 0014	Brake shoe spring	14	Set
	06 0013	Brake shoe slipper	2	
	06 0025	Expander lever	1	
L35	06 0027	Expander lever stud	1	
L37	005010	Expander lever washer	1	
L36	06 0029	Expander lever nut	2	
L41	06 0045	Expander lever tie rod	2	
L42	033057	Tie rod lock nut	1	
L39	06 0016	Yoke left hand thread	1	
L40	06 0019	Yoke right hand thread	1	
L70	06 0789	Air inlet cover	1	
	06 0020	Air inlet gauze	1	
	06 0021	Air exit gauze	1	
L3	06 0787	Self tapping screw	14	
	06 0845	Air exit cover	1	
L43	06 0532	Yoke pin	3	
L44	06 1553	Yoke pin circlip	3	
L28	19630	Expander bush	4	
L32	06 0034	Torque stop pivot pin	1	
	06 0033	Torque stop pivot pin nut	1	
	06 001	Front brake cover plate complete	1	
	21294	Pivot pin washer	2	
	019512	Pivot pin circlip	2	

REAR WHEEL

	06 0986	Wheel complete	1	
	06 0987	Wheel bare less fittings	1	
	18350	Rim only WM2-19	1	
	20063	Spoke—long head	20	
	20061	Spoke—short head	20	
	021693	Nipple	40	
M1	06 0313	Hub shell only	1	
M5	06 0319	Brake drum (sprocket)	1	
M8	04 0123	Brake drum sleeve nut	1	
M11	17721	Hub bearing left hand	3	
M10	040100	Hub bearing right hand	1	
M16	18234	Hub bearing spacer	1	
M14	06 0317	Hub bearing lock ring	1	
M13	E.6889	Hub bearing washer	1	
M12	E.6885	Hub felt washer	1	
M15	19714	Hub felt retaining washer	2	
M9	18231	Inner sleeve	1	
M17	05 0251	Brake drum retaining stud	1	
M2	18348	Hub disc	1	
M3	25100	Hub disc hammer drive screw	1	
M4	18731	Hub disc grommet	6	
M20	06 0289	Rear wheel spindle	3	
M21	15266	Spindle washer	1	
M19	06 0374	Spindle spacer	2	
M22	06 0392	Spindle nut	1	

Part No.	Part No.	Description	Qty.	Ref. No.
REAR WHEEL—continued				
M21	06 0332	Cover plate	1	
	06 0704	Brake lever return spring	1	
M30	06 0325	Torque pivot pin	1	
M31	06 0326	Torque pivot pin nut	1	
M36	14454	Pivot pin retaining plate	1	
M37	14506	Pivot pin retaining plate washer	1	
M38	06 0327	Pivot pin retaining plate bolt	2	
M24	06 0314	Brake cam	1	
M32	06 0829	Brake shoe	2	
	06 0790	Brake lining	2	
	E 5061	Brake lining rivet	14	See
M35	E 5032	Brake shoe spring	2	
M25	9765	Expander lever	1	
M26	060010	Expander lever washer	1	
M27	06 0029	Expander lever nut	1	
M29	06 0334	Cover plate spacer outer	1	
	7 5776	Cover plate washer	1	AR
	06 0806	Rear brake yoke cushion	1	

BRAKE OPERATING PARTS

Q1	06 0477	Brake pedal	1	
	06 0780	Rear brake lever roller	1	
	06 0797	Rear brake adjuster nut	1	
	06 0791	Rear brake adjuster collar	1	
	06 0776	Rear brake yoke adjustable	1	
	06 0752	Yoke end pin	1	
	06 0753	Yoke end pin tip	1	
	06 0604	Yoke cushion	1	
Q13	06 0482	Rear brake cable	1	
Q1	06 046	Boot sealing grease nipple	1	
Q4	06 0943	Brake pedal stop bolt	1	
Q3	06 0631	Brake pedal stop bush	1	
	021590	Brake pedal pivot washer	1	

SPEEDOMETER

	06 0475	Speedo head MPH	1	
	06 0731	Speedo head K/LD	1	
	06 0801	Speedo light lead	1	
	20087	Speedo cable	1	
H6	06 0510	Instrument case	1	
	16 0677	Speedo gear box	1	
	3291	Speedo gearbox spacer	1	
M18	010208	Speedo gearbox (with K/LD speedo head 06 0731)	1	

HEADLAMP

108219	nose clip	1	
534065	Clip, lens retaining (1/2 in. dia)	1	
06 0756	Headlamp with harness (Home and U.S.A.)	1	
06 0799	Headlamp with harness (French)	1	
06 0800	Headlamp with harness (Continental)	1	
03 540	Headlamp bolt washer	2	
011355	Headlamp bolt spacer	2	
532148	Headlamp rim	1	
144971	Screw, fixing rim	1	
114296	Plate, fixing rim	1	
19189	Warning light body assembly	1	
51 4033	Spring washer, warning light	1	
28	Bulb, warning light	1	
54945043	Bulb holder, warning light	1	
33710	Lighting switch	1	
515758	Light unit	1	
554602	Bulb holder, main	1	
54573590	Bulb holder, pilot	1	
446	Bulb, main	1	
989	Bulb, pilot	1	
54523979	Body	1	
54954377	Harness	1	

Part No.	Part No.	Description	Qty.	Bin No.
REAR LAMP				
	24840	Rear lamp (Lucas 679)	1	
	54577109	Lens Red	1	
	572269	Lens screw	2	
	54571677	Lens seating gasket	1	
	54574348	Bulb holder with reflector	1	
	380	Bulb	1	
	06 0909	Rear lamp screw	2	
	06.0810	Rear lamp lead	1	
HORN				
	0320-0	Electric horn	1	
	06.0865	Fixing bolt	2	
	002012	Fixing bolt washer	4	
	034057	Fixing bolt nut	3	
	06.0852	Horn bracket mudguard bolt	1	
	06.0862	Horn bracket mudguard bolt nut	1	
STOP LIGHT				
	03 621	Stop light switch	1	
	06 2677	Stop light switch screw	2	
	000519	Stop light switch screw washer	2	
	06 0478	Stop light switch screw nut	2	
	06 0810	Stop light switch cable	1	
	06 0653	Stop light switch lead bracket	1	
ALTERNATOR				
	54021027	Alternator (rotor and stator)	1	
K5	47305A	Stator only	1	
K15	54211901	Rotor only	1	
K2	06 0903	Alternator grommet	1	
K18	06 2286	Stator stud	1	
K27	06 2377	Stator stud spacer	1	
	0005 1	Stator stud washer	1	
K26	06 0700	Stator stud nut	1	
K12	06 0402	Rotor spacer	1	
K9, A140	20948	Rotor key	1	
K6, A74	24548	Rotor washer	1	
K7, A73	06 0387	Rotor nut	1	
K11	06 0664	Rotor shim (0.36 in)	AR	
K10	06 0665	Rotor shim (0.10 in)	AR	
	06 0572	Contact breaker complete	1	
	54419827	Contact breaker set	1	
	06 2573	Condenser park	1	
	06 2720	Contact breaker bolt	1	
	T 2271	Contact breaker bolt washer	1	
	01 3396	Contact breaker bolt washer	1	
	029981	Contact breaker fixing screw	2	
	029984	Contact breaker fixing screw washer	2	
	034061	Contact breaker shaft	1	
	033080	Contact breaker shaft pin	1	
	033007	Contact breaker shaft sprocket	1	
	033068	Contact breaker shaft bearing	1	
	034052	Contact breaker shaft bearing	1	
	034053	Contact breaker shaft oil seal	1	
	034055	Contact breaker shaft christ washer	1	
	034048	Contact breaker housing	1	
	032082	Contact breaker cover	1	
	19479	Contact breaker cover grommet	1	
	034056	Contact breaker cover seal	1	
	030084	Contact breaker cover clip	1	
	25135	Contact breaker housing fixing bolt	1	
	010706	Contact breaker housing fixing bolt washer	1	
	015306	Contact breaker housing fixing bolt washer	1	
	E 3229	Contact breaker housing fixing bolt nut	1	
	L 2191	Contact breaker housing flange gasket	1	
	T 2243	Contact breaker housing fixing stud	2	
	11796	Contact breaker housing fixing stud washer	2	
	E 3231	Contact breaker housing fixing stud nut	2	
	06 0946	Condenser park fixing screw	2	
	000539	Condenser park fixing screw washer	2	
	06 0678	Condenser park fixing screw nut	2	
	031075	Capacitor	1	
	031080	Capacitor spring	1	

BATTERY AND FITTINGS

033049	Battery PU25A	...	1	
--------	---------------	-----	---	--

RECTIFIER AND ZENER DIODE

029634	Rectifier with nut (Lucas 49072A)	...	1	
015306	Rectifier washer	...	1	
033057	Rectifier nut	...	1	
06.0649	Rectifier bracket	...	1	
000011	Rectifier bracket washer	...	2	
06.0348	Rectifier bracket nut	...	1	
033057	Rectifier bracket and battery carrier fixing nut	...	1	
06.0327	Rectifier bracket and battery earth bolt	...	1	
000012	Rectifier bracket and battery earth bolt washer	...	1	
030051	Zener diode	...	1	
06.0859	Zener diode bolt	...	1	
06.0544	Zener diode heat sink plate	...	2	
06.0541	Zener diode heat sink plate spacer	...	1	
06.0853	Zener diode bracket	...	1	
015306	Zener diode washer	...	1	
033057	Zener diode nut	...	1	
06.0847	Zener diode "Rotolok"	...	1	
06.0697	Coil	...	2	
06.0695	Coil fixing bolt	...	2	
045062	Coil fixing bolt washer	...	4	
033037	Coil fixing bolt nut	...	2	
06.0602	Coil blade	...	4	
06.0694	Coil bracket spacer	...	4	

SWITCHES AND ELECTRICAL SUNDRIES

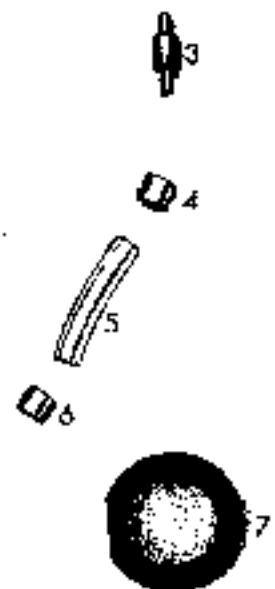
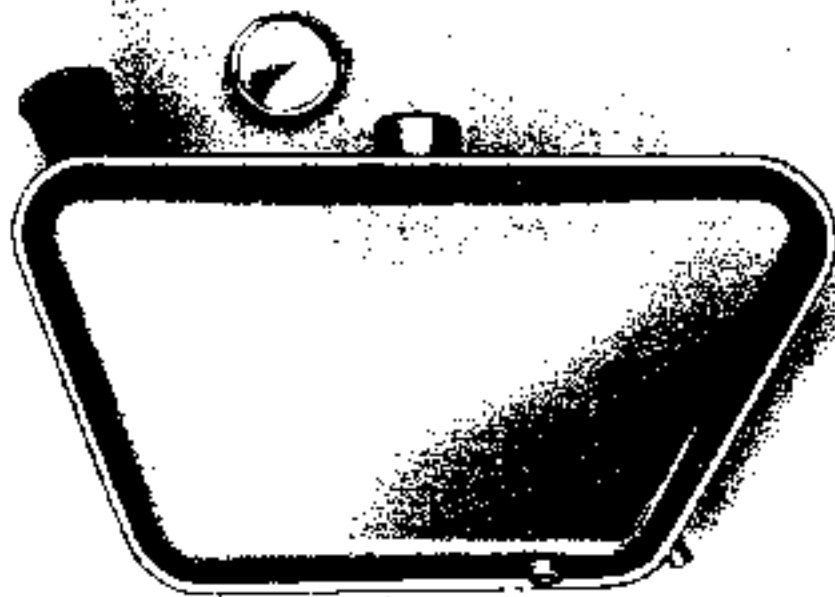
06.0802	Engine earth lead	...	1	
06.0327	Battery earth bolt (rectifier bracket fixing)	...	1	
000012	Battery earth bolt washer (rectifier bracket fixing)	...	1	
06.0585	H.T. cable for sparking plug	...	2	
06.0834	Sparking plug (Champion N 5 Y)	...	2	
36403A	Ammeter	...	1	
032220	Sparking plug cover (suppressed)	...	2	
03222	Sparking plug cover (unsuppressed)	...	2	
06.0785	Dipper switch and horn button	...	1	
033016	Ignition switch	...	1	
033044	Ignition switch lock (with 2 keys)	...	1	
000951	Ignition switch sleeve (L.R.)	...	1	
18285	Grommet-harness to frame	...	2	
06.0809	Grommet-harness to tail section	...	2	

GASKET SETS

06.0910	Gasket set complete	...	1	
06.0911	Gasket set decarbonising	...	1	
06.0719	Timing cover gasket	...	1	
048023	Oil seal (timing side)	...	1	
T.2187	Oil seal (driving side)	...	1	
16949	Filter body washer	...	1	
T.222	Oil pump sealing washer	...	1	
033056	Contact breaker cover gasket	...	1	
T.2191	Contact breaker housing fange gasket	...	1	
06.0398	Outer portion front chain case gasket	...	1	
042025	Inspection cap gasket (chaincase)	...	2	
20842	Inspection cap gasket (chaincase ignition timing)	...	1	
T.2084	Rocker lead pipe banjo washer	...	6	
06.0400	Cylinder head gasket	...	1	
24249	Cylinder base gasket	...	1	
T.2084	Rocker cover gasket	...	1	
T.2088	Rocker cover gasket	...	2	
T.2083	Rocker shaft joint washer	...	4	
T.2240	Rocker shaft plate joint washer	...	4	
T.2166	Exhaust pipe nut washer	...	2	
012443	Felt washer	...	1	
06.0711	Gasket—chaincase to crankcase	...	1	

ACCESSORY COVER

06.0854	Accessory cover assembled	...	1	
06.0836	Accessory cover bracket front	...	1	



14

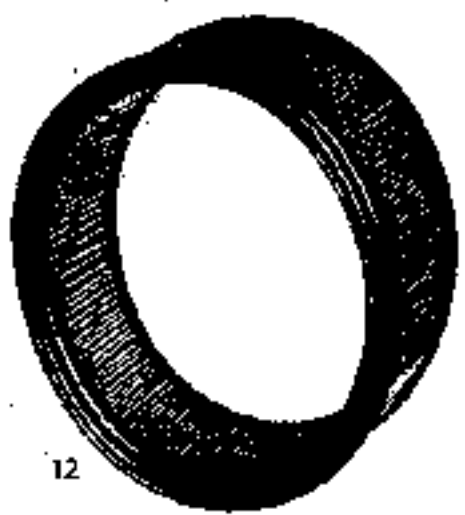
15
16



17
18



19
20



10
11



N AIR FILTER

Flare No	Part No.	Description	Qty	Str No
----------	----------	-------------	-----	--------

ACCESSORY COVER—continued

	06.0838	Accessory cover bracket rear
	06.0377	Accessory cover bracket bolt
	000012	Accessory cover bracket bolt washer	...	4
	033057	Accessory cover bracket bolt nut	...	4
J12	06.0848	Accessory cover "Rotolock"	...	4
	06.0857	Accessory cover "Rotolock" rubber pad	...	1
I14	06.0856	Accessory cover grommet	...	1

REVOLUTION COUNTER

	06.0676	Rev. counter head
	030392	Rev. counter drive table
	06.0801	Rev. counter light lead
H6	06.0510	Instrument case
A137	06.0710	Rev. counter gearbox	...	1
A136	0.2373	Rev. counter gearbox screw	...	1
A138	23446	Rev. counter gearbox washer	...	2

AIR FILTER

	06.0327	Air filter fixing bolt
	000012	Air filter fixing bolt washer
	033057	Air filter fixing bolt nut
	033027	Air filter mounting plate sleeve
N5	06.0901	Air filter front plate assembled	...	2
N9	06.0815	Air filter back plate assembled
N12	06.0673	Air filter element	...	1
N3	06.0816	Air filter perforated plate	...	1
N7	06.0900	Air filter fixing bolt	...	1
N7	06.0671	Air filter hose	...	2
N13	06.0527	Air filter bolt (to battery tray)	...	2
N19	06.0925	Air filter bolt locking strip (long)	...	3
N13	0600 2	Air filter bolt washer	...	1
N20	06.0924	Air filter bolt locking strip (short)	...	5

CABLE CLIPS

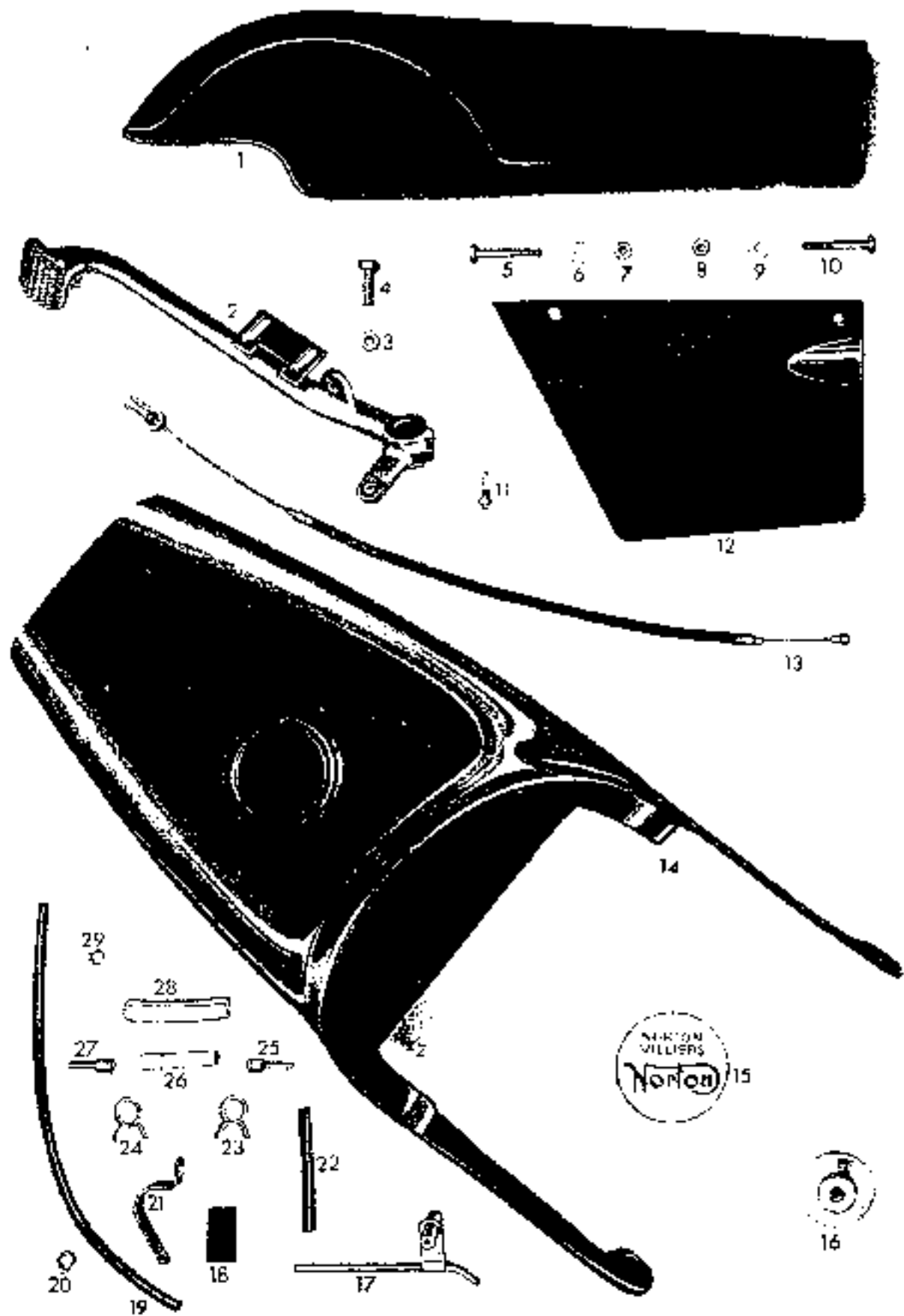
	041907	Rubber cable clip (short)	...	4
	026881	Rubber cable clip (long)	...	2

TAIL SECTION

Q 4	06.0502	Tail section	...	1
	06.0506	Tail section bracket	...	1
	06.0504	Tail section bracket rubber	...	1
	06.0359	Tail section bolt	...	1
	06.0855	Tail section bolt	...	1
	003011	Tail section bolt washer	...	1
	06.0864	Tail section nut	...	2
	06.0500	Tail section mount adhesive	...	1

TOOLS

	0.7251	Tool bag
	06.0820	Spanner O.E. $\frac{1}{2}$ in. \times $\frac{3}{8}$ in. AF	...	1
	06.082	Spanner O.E. $\frac{1}{2}$ in. \times $\frac{1}{2}$ in. AF
	06.0822	Spanner O.E. $\frac{1}{2}$ in. \times $\frac{3}{8}$ in. AF
	06.0823	Spanner O.E. $\frac{1}{2}$ in. \times $\frac{1}{2}$ in. AF
	06.0824	Spanner box $\frac{1}{2}$ in. AF
	06.0922	Spanner box $\frac{1}{2}$ in. \times $\frac{1}{2}$ in. AF
	0.7248	Pliers
	021675	Screwdriver
	017052	Spanner O.E. $\frac{1}{2}$ in. \times $\frac{1}{2}$ in.
	017053	Spanner O.E. $\frac{1}{2}$ in. \times $\frac{3}{8}$ in.
	SBL 2/76	Spanner box $\frac{1}{2}$ in. \times $\frac{1}{2}$ in.
	E24365	Contact breaker screwdriver/gauge
	019869	Allen key
	017252	Plug box spanner
	030459	Tommy bar
	023284	Suspension unit spanner
	LT007	Tyre lever
	017114	Tyre pump	...	2
	SPU 20	Rocker adjusting spanner
	06.0829	Tyre pump shield
	06.0989	Tool kit complete less inflator



○ TAIL SECTION

WORKSHOP TOOLS

Part No.	Description
06.0934	Auto Advance Draw Belt
06.0941	Engine Sprocket & Clutch Hub Tool
06.0947	Drift Front Engine Mounting
06.0948	Drift Rear Engine Mounting
06.0949	Auto Advance Lock Washer
06.0992	Front Engine Mounting Tool
06.0995	Rear Engine Mounting Tool
06.0999	Clutch Tool
06.1015	Clutch Hub Lock
06.1028	Rocker Shaft Extractor
06.1037	Camshaft Sprocket Extractor
06.0859	Camshaft Sprocket Bolt
06.1229	Exhaust Pipe Ring Spanner
06.0942	Head Spanner
06.1353	Camshaft Oil Seal Guide

FRONT CRASH BAR

06.1275	Front Crash Bar
06.1799	Rear Crash Bar (1969)



COMMANDO

SPARES LIST

SUPPLEMENTS FOR 1969 AND 1970

Pages 36 to 47

SUPPLEMENTS FOR 1969 AND 1970

SPARES LIST FOR 1969 COMMANDO 'R' to be used in conjunction with 1968 COMMANDO SPARES LIST

Part No.	Part No.	Description	Qty	Bin No.
CRANKCASE—PAGE 4				
061099		Crankcase complete with timing cover	1*	
061073		Timing cover	1*	
061117		Crankcase valves	1*	
061100		Crankcase timing side only	1*	
061092		Timing cover gasket	1*	
061102		Timing cover screw long	1*	
061103		Timing cover screw short	4*	
061104		Timing cover screw medium	2*	
CYLINDER BARREL—PAGE 5				
060396A		Barrel (Silver)	1	
PISTONS AND RINGS—PAGE 5				
061185		Piston complete Std. Left Hand	1	
061187		Piston complete - 010 Left Hand	1	
061189		Piston complete - 030 Left Hand	1	
061191		Piston complete - 040 Left Hand	1	
061193		Piston complete - 040 Left Hand	1	
061186		Piston complete Std. Right Hand	1	
061188		Piston complete - 010 Right Hand	1	
061190		Piston complete - 020 Right Hand	1	
061192		Piston complete - 030 Right Hand	1	
061194		Piston complete - 040 Right Hand	1	
061180		Scraper ring Std.	2	
061181		Scraper ring - 010	2	
061182		Scraper ring - 020	2	
061183		Scraper ring - 030	2	
061184		Scraper ring - 040	2	
TIMING GEAR—PAGE 6				
061086		Camshaft thrust washer	1*	
061084		Camshaft	1*	
061077		Intermediate gear assembled	1*	
061078		Intermediate gear shaft	1*	
061079		Intermediate gear bush	1*	
061080		Camshaft sprocket	1*	
12732		Camshaft sprocket nut	1*	
061094		Chain tensioner slipper	1*	
ROCKERS, COVERS ETC.—PAGE 6				
18093A		Rocker covers (bright polish)	2	
18094A		Rocker cover (bright polish)	1	
HEAD STEADY STAY—PAGE 7				
061129		Engine steady side plate	2	
ENGINE PLATES—PAGE 7				
061226		Front engine plate mounting bush	2*	
061277		Front engine plate mounting spacer	1*	
061278		Front engine plate rubber buffer	2*	
061227		Rear engine plate mounting rubber	3*	
061279		Rear engine plate mounting spacer	2*	
061280		Rear engine plate rubber buffer	2*	

(*Applicable after ENGINE No. 131257)

Plate No.	Part No.	Description	Qty.	Bin No.
-----------	----------	-------------	------	---------

CARBURETTOR—PAGE 9

061335	Carburettor left hand (930 31)	...	1*	
061336	Carburettor right hand (930 30)	...	1*	
21248	Carburettor screw	...	1*	
928-071	Gauze	...	2*	
L930 035	Left hand body	...	1*	
R930 035	Right hand body	...	1*	

CHAINS—PAGE 11

029485	Rear chain—From engine No. 131797	...	1	
--------	-----------------------------------	-----	---	--

GEARS AND SHAFTS—PAGE 11

061057	Sieve gear	...	1	
061058	Layshaft 4th gear	...	1	

GEAR CHANGE—PAGE 13

040632	Foot change lever (chrome) STATE CHROME OR DULL	...	1	
--------	--	-----	---	--

KICKSTARTER—PAGE 15

061059	Kickstarter crank assembly (chrome)	STATE CHROME	1	
061055	Kickstarter crank bolt (chrome)	OR DULL	1	

FRAME—PAGE 15

061130	Frame	...	1	
061286	Certification plate	...	1	
061287	Certification plate rivets	...	4	

CENTRE STAND—PAGE 17

261116	Centre stand	...	1	
061293	Centre stand locating spring	...	2	
061029	Centre stand spring	...	2	

FOOTRESTS—PAGE 17

061053	Footrest right hand (chrome)	STATE CHROME	1	
051027	Footrest left hand (chrome)	OR DULL	1	
061246	Support bolt	...	1*	
000011	Support bolt washer	...	2*	
261247	Support bolt nut	...	1*	
061228	Support plate	...	1*	

FRONT FORKS—PAGE 17

011544A	Top cover (chrome)	STATE CHROME	1	
011545A	Top cover (chrome)	OR BLACK		
18263	Head races	...	2	
13591	Head race felt	...	2	

HANDLEBAR—PAGE 19

061046	Handlebar (Export)	...	1	
--------	--------------------	-----	---	--

FRONT MUDGUARD—PAGE 19

060519A	Front mudguard stay (chrome)	STATE CHROME OR DULL	1	
---------	------------------------------	----------------------	---	--

REAR MUDGUARD—PAGE 19

061173	Rear mudguard	...	1	
060359	Rear mudguard bolt	...	3	
000011	Rear mudguard washer	...	3	
060348	Rear mudguard nut	...	3	
061121	Rear mudguard ribs	...	1	
061174	Rear mudguard stay	...	1	

(* Applicable after ENGINE No. 131257)

Plate No.	Part No.	Description	Qty.	Sh. No.
REAR NUMBER PLATE—PAGE 19				
	002176	Number plate spacer	1	
	061355	Side reflector bracket	2	
	061197	Rear number plate support	1	
	060327	Rear number plate support bolt	2	
	060863	Rear fairing bolt	2	
	000012	Rear fairing washer	2	
	061121	Rear fairing	1	
BRAKE CABLE—PAGE 20				
	061076	Front brake cable complete with stop light switch	1	U.S.A. only
OIL PIPE—PAGE 22				
	061357	Oil pipe clip	1*	
TWIN SEAT—PAGE 22				
	061168	Dual seat	1	
	21952	Dual seat rubber	6	
PETROL TANK—PAGE 22				
	061108	Petrol tank RED	1	
	061110	Petrol tank BLUE	1	
	027138	Petrol tank number pad	1	
	061040	"MORTON" transfer	2	
	009193	Reserve transfer	1	
OIL TANK—PAGE 22				
	061117	Oil tank	1	
	063017	Transfer 750 COMMANDO	1	
	061354	Washer	1	
FRONT CHAINCASE—PAGE 24				
	061025	Chaincase outer half	1*	
	060763	Ignition indicator plate	1*	
BATTERY BOX AND CARRIER—PAGE 24				
	034119	Shakeproof washer	2	
REAR WHEEL—PAGE 27				
	011707	Security bolt	1	
BRAKE PARTS—PAGE 28				
	061054	Brake pedal (chrome)	1	STATE CHROME OR DULL
SPEEDOMETER—PAGE 28				
	061333	Speedometer bezel kit	1	
HEADLAMP—PAGE 28				
	061160	Headlamp complete with harness	1*	
	061356	Headlamp bolt	2*	
ALTERNATOR—PAGE 30				
	061177	Alternator	1	
	061101	Contact breaker	1*	
	061281	Contact breaker screw	2*	
	061093	Contact breaker lead seal	1*	
	061087	Contact breaker cover	1*	
	061105	Contact breaker cover screw	2*	
	34419344	Auto advance unit	1*	
	34419220	Adjusting ring	1*	
	34415642	Spring	2*	

(*Applicable after ENGINE No. 131257)

Part No.	Part No.	Description	Qty.	Bin No.
----------	----------	-------------	------	---------

RECTIFIER AND ZENER DIODE—PAGE 31

061156	Coil	...	2*	
54413974	Coil bracket	...	1*	
425377	Condenser	...	2*	
061242	Coil bracket	...	1	
060865	Coil bracket bolt	...	2	
030017	Coil bracket washer	...	2	
033057	Coil bracket nut	...	2	

SWITCH AND ELECTRICAL SUNDRIES—PAGE 31

061169	H.T. Cable	...	2*	
--------	------------	-----	----	--

GASKET SETS—PAGE 31

061361	Gasket set	...	1*	
061097	Timing cover gasket	...	1*	

ACCESSORY COVER—PAGE 31

061171	Accessory cover	...	1	
061077	Accessory cover transfer	...	1	
060498	Tool securing band	...	1	

REVOLUTION COUNTER—PAGE 33

061089	Rev counter worm gear	...	1*	
061090	Rev counter drive housing	...	1*	
061106	Rev counter drive housing screw	...	2*	
061287	Rev counter drive housing O-ring	...	1*	
061118	Rev counter cable	...	1	

CABLE CLIP—PAGE 33

026880	Cable clip	...	6	
026881	Cable clip	...	4	

TOOLS—PAGE 33

061359	Camshaft oil seal guide	...	1*	
--------	-------------------------	-----	----	--

OPTIONAL

061273	Front crash bar set	...	1	
061269	Rear crash bar set	...	1	

(*Available after ENG NF No. 031257)

SPARES LIST FOR 1969 COMMANDO 'S' to be used in conjunction with 1968 COMMANDO SPARES LIST

CRANKCASE—PAGE 4

061099	Crankcase complete with timing cover	...	1	
061073	Timing cover	...	1	
061102	Crankcase halves	...	1	
061160	Crankcase timing side only	...	1	
061092	Timing cover gasket	...	1	
061102	Timing cover screw—long	...	1	
061103	Timing cover screw—short	...	4	
061104	Timing cover screw—medium	...	2	

CYLINDER BARREL—PAGE 5

060356A	Cylinder barrel (SILVER)	...	1	
---------	--------------------------	-----	---	--

Plate No.	Part No.	Description	Qty	Sub No.
PISTON AND RING STANDARD—PAGE 5				
	061185	Piston complete left hand	1	
	061186	Piston complete right hand	1	
	061180	Scraper ring	2	
PISTON AND RING OVERSIZE—PAGE 5				
	061187	Piston complete left hand - 010	1	
	061189	Piston complete left hand - 020	1	
	061191	Piston complete left hand - 030	1	
	061193	Piston complete left hand - 040	1	
	061188	Piston complete right hand - 010	1	
	061190	Piston complete right hand - 020	1	
	061192	Piston complete right hand - 030	1	
	061194	Piston complete right hand - 040	1	
	061181	Scraper ring - 010	1	
	061182	Scraper ring - 020	1	
	061183	Scraper ring - 030	1	
	061184	Scraper ring - 040	1	
TIMING GEAR—PAGE 6				
	061026	Camshaft thrust washer	1	
	061034	Camshaft	1	
	061077	Intermediate gear assembled	1	
	061078	Intermediate gear shaft	1	
	061079	Intermediate gear bush	1	
	061080	Camshaft sprocket	1	
	20733	Camshaft sprocket nut	1	
	061094	Chain tensioner slipper	1	
ROCKERS, COVERS ETC.—PAGE 6				
	1E092A	Rocker cover (BRIGHT POLISH)	2	
	1E094A	Rocker cover (BRIGHT POLISH)	1	
HEAD STEADY STAY—PAGE 7				
	061128	Engine steady side plate	2	
ENGINE PLATES AND BOLTS—PAGE 7				
	061226	Front engine mounting bush	2	
	061277	Front engine mounting spacer	2	
	061078	Front engine mounting buffer rubber	2	
	061227	Rear engine mounting rubber	2	
	061279	Rear engine mounting spacer	2	
	061280	Rear engine mounting buffer rubber	1	
CARBURETTOR—PAGE 9				
	061335	Carburettor left hand (930-01)	1	
	061336	Carburettor right hand (930-00)	1	
	21246	Carburettor screw	1	
	920-071	Gauge	2	
	L930-005	Left Hand Body	1	
	R930-005	Right Hand Body	1	
EXHAUST PIPE—PAGE 9				
	061320	Exhaust pipe left hand	1	
	061323	Exhaust pipe right hand	1	
	061314	Exhaust pipe heat shield	2	
	061317	Exhaust pipe heat shield clip	2	
	061316	Exhaust pipe heat shield screw	2	
SILENCER—PAGE 10				
	061312	Silencer	2	
	061328	Silencer Clip	2	
	E.3135	Silencer Bolt	2	
	E.3231	Silencer nut	2	
	061307	Silencer stay	1	
	061304	Silencer bracket	1	
	014999	Silencer rubber	2	
	061315	Silencer heat shield	2	
	061316	Silencer heat shield screw	4	

Part No.	Part No.	Description	Qty.	Alt. No.
----------	----------	-------------	------	----------

CHAINS—PAGE 11

U29483	Rear chain From Engine No. 131757	1
--------	-----------------------------------	-----	-----	---

GEARS AND SHAFT—PAGE 11

061057	Sleeve gear	1
061058	Layshaft 4th gear	1

GEAR CHANGE—PAGE 13

040632	Foot change lever (chrome)	1
--------	----------------------------	-----	-----	---

KICKSTARTER—PAGE 15

061059	Kickstarter crank assembled (chrome)	1
061058	Kickstarter crank bare (chrome)	1

FRAME—PAGE 15

061120	Frame	1
061286	Certification label	1
061287	Certification label rivet	4

CENTRE STAND—PAGE 17

061116	Centre stand	1
061255	Centre stand locating bar	1
061039	Centre stand spring	1

FOOTRESTS—PAGE 17

061053	Footrest right hand (chrome)	1
061052	Footrest left hand (chrome)	1
061246	Footrest support bolt	1
061247	Footrest support nut	1
000011	Footrest support washer	2
061228	Footrest support plate right hand	1

FRONT FORKS—PAGE 17

061434	Forks complete	1
061133	Fork Crown	1
061131	Handlebar lug	1
061136	Pinch stud	2
19263	Head Race	2
15631	Head Race Felt	2
061137	Extension collar	1
061114	Main tube	1
061115	Quarter	2

HANDLEBAR—PAGE 19

061046	Handlebars (Export)	1
--------	---------------------	-----	-----	---

FRONT MUDGUARD—PAGE 19

25542A	Front mudguard	1
25540A	Front mudguard stay	2

REAR MUDGUARD—PAGE 19

061402	Rear mudguard	1
060359	Rear mudguard bolt	4
000011	Rear mudguard washer	7
060348	Rear mudguard nut	3
061121	Rear mudguard clip	1
061400	Rear mudguard stay	2

Plate No.	Part No	Description	Qty.	Bin No.
REAR NUMBER PLATE—PAGE 19				
	061197	Rear number plate support	1	
	060327	Rear number plate support bolt	2	
	061355	Side reflector bracket	2	
	060865	Rear fairing bolt	2	
	000012	Rear fairing washer	2	
	061122	Rear fairing	1	
BRAKE CABLE—PAGE 20				
	061076	Front brake cable complete with stop switch—U.S.A. ONLY	1	
OIL PIPES—PAGE 22				
	061159	Oil feed filter	1	
	042065	Oil feed filter washer	2	
	060950	Oil feed hose 4 1/2"	1	
	14698	Oil return adaptor washer	2	
	060950	Oil return hose 5 1/2"	1	
	061045	Oil pipe and junction block	1	
	061157	Oil pipe dip	1	
TWIN SEAT—PAGE 22				
	061068	Dual seat	1	
	21852	Dual seat rubber	6	
PETROL TANK—PAGE 22				
	061108	Petrol Tank RED	1	
	061110	Petrol Tank BLUE	1	
	061040	NORTON transfer	2	
	009195	Reserve transfer	1	
OIL TANK—PAGE 22				
	061140	Oil Tank	1	
	061338	Oil tank cap	1	
	060652	Oil tank bolt	1	
	000636	Oil tank sieve	1	
	061153	Oil tank feed banjo	1	
	061155	Oil tank return banjo	1	
	061157	Oil tank return bolt	1	
FILLION FOOTREST—PAGE 24				
	060861	Lug bolt	7	
FRONT CHAINCASE—PAGE 24				
	061025	Chaincase outer half	1	
	060763	Ignition and cover plate	1	
REAR CHAINGUARD—PAGE 24				
	061272	Rear chainguard	1	
BATTERY BOX AND CARRIER—PAGE 24				
	061220	Battery tray assembled	1	
	061221	Battery carrier rubber	1	
	061233	Battery carrier and oil tank supports	1	
REAR WHEEL—PAGE 27				
	011707	Security bolt	1	
BRAKE OPERATING PARTS—PAGE 28				
	061354	Brake pedal (chrome)	1	
SPEEDOMETER—PAGE 28				
	061333	Speedometer head c/w lens	1	

Plate No.	Part No.	Description	Qty.	Buy No.
-----------	----------	-------------	------	---------

HEADLAMP—PAGE 28

061160	Headlamp complete with harness—HOME AND U.S.A.	1	
061356	Headlamp bolt...	2	
000011	Headlamp washer	2	
061234	Headlamp spacer	2	
061378	Clip harness-battery platform	1	
060915	Clip harness battery platform bolt	1	
061239	Headlamp support	1	
061238	Headlamp stay left hand	1	
061245	Headlamp stay right hand	1	
060327	Headlamp stay bolt	2	
015306	Headlamp stay washer	2	
033057	Headlamp nut	2	
000012	Headlamp washer	4	
061362	Headlamp lock nut	2	
061224	Headlamp complete with harness (FRANCE)	1	
061225	Headlamp with harness complete (CONTINENTAL)	1	
553540	Light unit (GERMANY & ITALY)	1	
54956250	Harness	1	

ALTERNATOR—PAGE 30

06117	Alternator	1	
061101	Contact breaker	1	
061281	Contact breaker screw	1	
061053	Contact breaker lead seal	1	
061087	Contact breaker cover	1	
061105	Contact breaker screw	2	

REAR LAMP—PAGE 30

54953286	Stop and light exc	1	
----------	--------------------	---	--

RECTIFIER AND ZENER DIODE—PAGE 31

061242	Coil bracket	1	
060865	Coil bracket belt	2	
000012	Coil bracket washer	4	
033057	Coil bracket nut	2	
061158	Coil	1	
34419974	Coil bracket	1	
423377	Condenser	2	

SWITCHES AND ELECTRICAL SUNDRIES—PAGE 31

54956423	H ⁺ lead unsuppressed	2	
(061169)			
54953387	Rev counter and speedometer lead	2	

ACCESSORY COVER—PAGE 33

061342	Dzus fastener	4	
061341	Dzus fastener cinchlip	4	
061340	Dzus fastener spacer	4	
061213	Right side cover RED	1	
061209	Right side cover BLUE	1	
061207	Right side cover transfer	1	
061202	Left side cover RED	1	
061198	Left side cover BLUE	1	
061207	Left side cover transfer	1	
061204	Left side cover bracket	2	
342929	Left side cover spacer	2	
061344	Left side cover bolt	4	
061206	Left side cover grommet	4	

REVOLUTION COUNTER—PAGE 33

061089	Rev counter worm gear	1	
061090	Rev counter drive housing	1	
061106	Rev counter drive housing screw	2	
061287	Rev counter drive housing O-ring	1	
061118	Rev counter cable	1	

Plate No.	Part No.	Description	Qty.	Buy No.
-----------	----------	-------------	------	---------

AIR FILTER—PAGE 33

363902A	Air filter front plate (chrome)	1	
361361	Air filter front plate spacer	1	

CABLE CLIPS—PAGE 33

026880	Cable clip	6	
026881	Cable clip	4	

TOOLS—PAGE 33

061359	Camshaft oil seal guide	1	
--------	-------------------------	---	--

OPTIONAL

061275	Front crash bar set	1	
061289	Rear crash bar set	1	

SPARES LIST FOR 1969 COMMANDO FASTBACK to be used in conjunction with 1968 COMMANDO SPARES LIST

CRANKCASE—PAGE 4

061099	Crankcase complete with timing cover	1*	
061071	Timing cover	1*	
061112	Crankcase halves less timing cover	1	
061109	Crankcase timing side only	1*	
061092	Timing cover gasket	1*	
061107	Timing cover screw long	1*	
061103	Timing cover screw short	4*	
061104	Timing cover screw medium	2*	

CYLINDER BARREL—PAGE 5

060355A	Cylinder barrel silver	1	
---------	------------------------	---	--

PISTONS—PAGE 5

061185	Piston complete Std. left hand	1	
061186	Piston complete Std. right hand	1	
061190	Scraper ring Std.	2	
061187	Piston complete - 010 left hand	1	
061189	Piston complete - 020 left hand	1	
061191	Piston complete - 030 left hand	1	
061193	Piston complete - 040 left hand	1	
061188	Piston complete - 010 right hand	1	
061190	Piston complete - 020 right hand	1	
061192	Piston complete - 030 right hand	1	
061194	Piston complete - 040 right hand	1	
061181	Scraper ring - 010	2	
061182	Scraper ring - 020	2	
061183	Scraper ring - 030	2	
061184	Scraper ring - 040	2	

CAN
REPLACE 1968
PATTERN

TIMING GEAR—PAGE 6

061086	Camshaft thrust washer	1*	
061084	Camshaft	1*	
061077	Intermediate gear ass.	1*	
061078	Intermediate gear shaft	1*	
061079	Intermediate gear bush	1*	
061080	Camshaft sprocket	1*	
20732	Camshaft sprocket nut	1*	
061094	Chain tensioner slipper	1*	

(*Applicable after ENGINE No. 131257)

Part No.	Part No.	Description	Qty.	Bin No.
HEAD STEADY STAY—PAGE 7				
061128		Engine steady side plate	2	
ENGINE PLATES ETC.—PAGE 7				
061226		Front engine mounting bush	2*	
061277		Front engine mounting spacer	1	
061278		Front engine buffer rubber	2*	
061227		Rear engine mounting rubber	2*	
061279		Rear engine mounting spacer	1	
061280		Rear engine buffer rubber	2*	
ROCKER COVERS ETC.—PAGE 6				
18092A		Rocker cover front (bright polish)	1	STATE BRIGHT
18094A		Rocker cover rear (bright polish)	1	OR DULL
CARBURETTOR—PAGE 9				
061335		Carburettor left hand (K930 31)	1*	
061336		Carburettor right hand (K930 30)	1*	
2124B		Carburettor fixing screw	1*	
578 071		Gauge	2*	
L930 005		Left hand body	1*	
R930 005		Right hand body	1*	
GEARS AND SHAFTS—PAGE 11				
061057		Sleeve gear assy.	1	
061050		Layshaft 4th gear	1	
CHAINS—PAGE 11				
029465		Rear chain—Front engine No. 131757	1	
GEAR CHANGE—PAGE 13				
049632		Footchange lever (chrome)	1	STATE CHROME OR DULL
KICKSTARTER—PAGE 15				
061059		Kickstarter crank assembled (chrome)	1	STATE CHROME
061058		Kickstarter crank bare (chrome)	1	OR DULL
FRAME—PAGE 15				
051330		Frame	1	
051286		Certification label	1	
051287		Certification label rivet	4	
CENTRE STAND—PAGE 17				
061116		Centre stand	1	
061295		Centre stand locating spring	1	
061039		Centre stand spring	1	
FOOTRESTS—PAGE 17				
061053		Footrest right hand (chrome)	1	STATE CHROME
061052		Footrest left hand (chrome)	1	OR DULL
061246		Footrest support bolt	1*	
000011		Footrest support bolt washer	2*	
061247		Footrest support bolt nut	1*	
061228		Footrest support plate	1*	
FRONT FORKS—PAGE 17				
031544A		Top cover tube left hand (chrome)	1	STATE CHROME
031545A		Top cover tube right hand (chrome)	1	OR BLACK
18263		Frame ball race	2	
15631		Frame ball race felt washer	2	

(*Applicable after ENGINE No. 131257)

Plate No.	Part No.	Description	Qty	Fin No
HANDLEBAR—PAGE 19				
	061046	Handlebar (Export)	1	
FRONT MUDGUARD—PAGE 19				
	060619A	Front mudguard stay (chrome) STATE CHROME OR BLACK	1	
REAR NUMBER PLATE—PAGE 19				
	061355	Reflector bracket	2	
	000179	Number plate spacer	1	
BRAKE CABLE—PAGE 20				
	061076	Front brake cable complete with stop switch—U.S.A. ONLY	1	
PETROL TANK—PAGE 22				
	026859	Petrol tank rubber	1	
	032229	Petrol tank support rubber	1	
	009195	Petrol tank reserve transfer	1	
	061040	'NORTON' transfer	1	
	061069	Petrol tank RED SELF FINISH	1	
	061070	Petrol tank GREEN NOT	1	
	061071	Petrol tank RED SILVER RECESSED	1	
	061139	Petrol tank FIRE-FLAKE SILVER FOR MOTIF	1	
OIL TANK—PAGE 22				
	061117	Oil tank	1	
	061017	Oil tank transfer 750 Commando	1	
	061354	Oil tank washer	1	
OIL PIPES—PAGE 22				
	061357	Oil pipe dia.	1	
FRONT CHAINCASE—PAGE 24				
	061033	Chaincase outer half	1	
	060761	Ignition indicator plate	1	
BATTERY BOX AND CARRIER—PAGE 24				
	014119	Washer	2	
REAR WHEEL—PAGE 27				
	013707	Security bolt	1	
BRAKE OPERATING PARTS—PAGE 28				
	061054	Brake pedal (chrome) STATE CHROME OR DULL	1	
SPEEDOMETER—PAGE 28				
	061330	Speedometer head—kilos	1	
HEADLAMP—PAGE 28				
	061160	Headlamp complete with harness	1*	
	061356	Headlamp bolt	2*	
HORN—PAGE 30				
	015306	Horn bracket guard washer	1	
	002012	Horn bracket guard washer	1	
	060865	Horn bracket guard bolt	1	

(*Application after ENGINE No. 131257)

Plate No.	Part No.	Description	Qty.	Buy No.
ALTERNATOR—PAGE 30				
	06177	Alternator (rotor and stator)	1	
	06170*	Contact breaker complete	1*	
	54419344	Auto advance unit	1*	
	54419220	Adjusting pin	1*	
	54415642	Springs	2*	
	061093	Contact breaker lead seal	1*	
	061097	Contact breaker cover	1*	
	061281	Contact breaker screw	2*	
	061105	Contact breaker cover screw	2*	

RECTIFIER AND ZENER DIODE—PAGE 31

	061158	Ignition coil	2*	
	061242	Ignition coil bracket to frame	1	
	060865	Ignition coil bracket to frame bolt	2	
	009012	Ignition coil bracket to frame washer	2	
	093057	Ignition coil bracket to frame nut	2	
	54415974	Coil bracket	1*	
	425377	Condenser	2*	

SWITCHES AND ELECTRICAL SUNDRIES—PAGE 31

	061169	H.T. Cable	2*	
	061329	Ignition switch sleeve	1*	

ACCESSORY COVER—PAGE 31

	061119	Accessory cover	1	
	061017	Accessory cover Transfer 750 Commando	1	

GASKET SETS—PAGE 31

	061363	Gasket set	1*	
	061092	T timing cover gasket	1*	

REVOLUTION COUNTER—PAGE 33

	061118	Rev. counter cable	1*	
	061089	Rev. counter drive worm gear	1*	
	061090	Rev. counter drive housing	1*	
	061106	Rev. counter drive housing screw	2*	
	061252	Rev. counter drive housing O-ring	1*	

CABLE CLIP—PAGE 33

	026820	Cable clip	6	
	026891	Cable clip	4	

TAIL SECTION—PAGE 33

	061063	Tail section RED	SELF FINISH NOT ACCESSSED FOR MOTIF	1
	061064	Tail section GREEN		1
	061065	Tail section RED/SILVER		1
	061138	Tail section FIRE FLAKE SILVER		1
	035039	'NORON' Transfer		1
	061044	COMMANDO 750 Transfer		2

TOOLS—PAGE 33

	061359	Camshaft oil seal guide	1*	
--	--------	-------------------------	----	--

OPTIONAL EQUIPMENT

	061275	Crash bar set—Front	1	
	061289	Crash bar set—Rear	1	

(*Applicable after ENGINE No. 130257)

SPARES SUPPLEMENT FOR 1970 COMMANDO—ALL MODELS

To be used in conjunction with 1968 Commando Spares List,

PARTS CHANGED FROM 1969 MODELS

Page No	1970 Part No	Description	Qty	1969 Part No	Model's Used on
4	061537	Crankcase halves assembled	1	061112	ALL
4	061447	Crankcase Drive Side	1	063401	ALL
4	061538	Crankcase Flying Side	1	061100	ALL
4	061474	Crankcase T.S. Only	1	061100	ALL
7	014117	Eng. Greedy Screw Washer	3	003011	ALL
11	040615	Mainshaft 1st Gear	1	040912	ALL
11	040614	Mainshaft 2nd Gear	1	041422	ALL
—	061441	Camshaft Pin	1	061784	ALL U.S.A.
—	010461	Dead-End Roller on Jaws	1	—	ALL
17	061702	Crank Shaft Nut	2	061702	ALL
24	061722	Pillion Rest Support Plate	2	—	FASTBACK ROADSTER
24	062471	Pillion Rest Support Spring	2	—	FASTBACK ROADSTER
27	14710240-4	Fork Slider Pinion Spring	1	260115	ALL
28	061644	Twostrip	1	014635	ALL
28	061450	U.S.A. Torque Cable (R. Side only)	1	062917	ALL U.S.A.
28	061451	U.S.A. Torque Cable (L. Side only)	1	011612	ALL U.S.A.
33	061513	Side Lever	1	—	ROADSTER
33	061514	Dead-End Rod	1	—	ROADSTER
9	061506	L.H. Exhaust U.S.A.	1	060012	ALL U.S.A. FASTBACK ROADSTER
9	061607	R.H. Exhaust U.S.A.	1	060021	FASTBACK ROADSTER U.S.A.
10	061505	Swinger	2	03763	FASTBACK ROADSTER U.S.A.
10	061338	Swinger Cap	1	16235	ROADSTER 'S'
10	03131	Swinger Cap Bolt	2	060727	U.S.A. FASTBACK
10	03231	Swinger Cap Nut	1	140146	—
11	061721	Seat Stay	1	—	ALL U.S.A. ROADSTER FASTBACK
11	061720	Seat Stay Frame Stay	1	—	ROADSTER FASTBACK U.S.A.
24	061769	Swinger Rest Bolt	2	060517	ROADSTER FASTBACK U.S.A.

1970 ROADSTER ONLY

PARTS PREVIOUSLY LISTED ONLY FOR 'S' TYPE AND NOW COMMON TO ROADSTER:

Front fender	061341	Headlamp bolt washer	060011
Front fender stay (chrome)	061340	Headlamp bolt spacer	061214
Handlebar (sg)	061331	Headlamp supports	061215
Fork crown assembled	061122	Headlamp top stay L.H.	061238
Fork crown parts stud	061123	Headlamp top stay R.H.	061249
Fork slider extension	061124	Headlamp top stay bolt	060127
Fork main tube	061114	Headlamp top stay washer	015715
Fork garter	061115	Headlamp bottom stay washer	000012
Chain guard (chrome)	061277	Headlamp bottom stay nut	033037
Oil tank	061140	Headlamp bottom stay (oil nut)	061167
Oil feed filter	061159	Cap-harness to battery platform	061478
Oil feed filter washer	045565	Accessory cover bolt	061204
Oil feed bung	061157	Accessory cover grommet	060856
Junction block	061345		