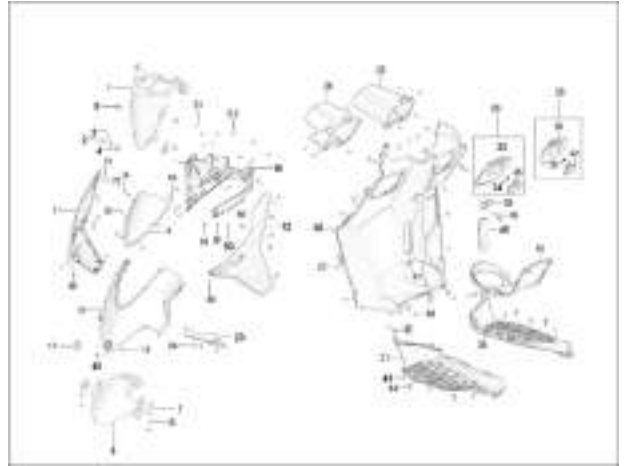
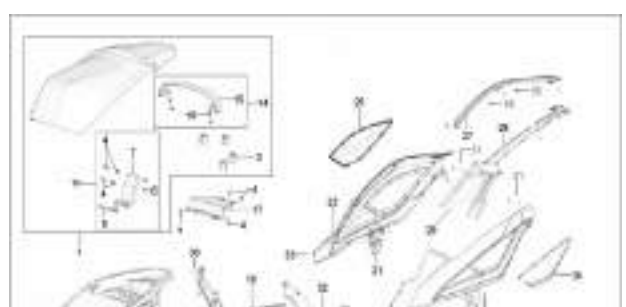


BODY PARTS LIST OF X50

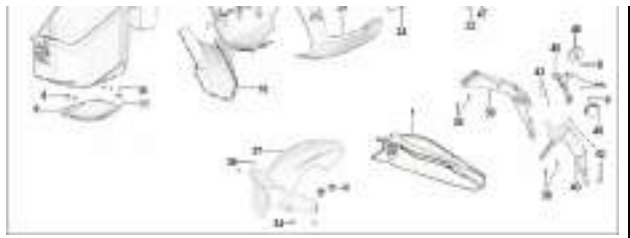
NO	CODE	ENGLISH DESCRIPTION	QTY
1	65408B470000	COVER ,SPEEDOMETER	1
2	B01090602065	BOLT6×20MM	2
3	08334J040000	BUSH	2
4	08332J040000	CUSHION	2
5	08051G120004	NUT M5	2
6	65101B47B400	FRONT FENDER (BLACK B4)	1
7	86300B470000	FR. REFLECTOR	2
8	65114B920000	BOLT 6×16MM	4
9	65203B470000	METER VISION ASSY.	1
10	65301B470000	FRONT COVER	1
11	65306B470050	RIGHT LEG SHIELD (RED/BLACK,TF/B4)	1
11	65306B470060	RIGHT LEG SHIELD (YELLOW/BLACK,YP/B4)	1
11	65305B47BC00	RIGHT LEG SHIELD (BLACK BC)	1
11	65306B470040	RIGHT LEG SHIELD (GREEN/BLACK,GL/B4)	1
12	65305B470050	LEFT LEG SHIELD (RED/BLACK,TF/B4)	1
12	65305B470060	LEFT LEG SHIELD (YELLOW/BLACK,YP/B4)	1
12	65305B47BC00	RIGHT LEG SHIELD (BLACK BC)	1
12	65305B470040	LEFT LEG SHIELD (GREEN/BLACK,GL/B4)	1
13	B02180501268	SCREW 5×12MM	4
14	B04000500065	NUT M5	4
15	B02180501668	SCREW 5×16MM	2
16	B01090601265	BOLT M6×12	2
17	65304B470000	cover of index tag	1
18	08051T020003	NUT M6	1
19	65303B470000	support of front cowling	1
20	B05074801605	TAPPING SCREW ST4.8×16	4
21	65801T020001	CLIP	10
22	B05074201305	TAPPING SCREW ST4.2×13	4
23	65302B470000	plate of front cowling (bottom)	1
24	B01070601265	BOLT M6×12	3
25	65406B470000	Right box	1
26	65405B470000	Left box	1
27	B05074201305	TAPPING SCREW ST4.2×13	8
28	65440B470000	Component of cover of right box	1
29	65430B470000	Component of cover of left box	1
30	65441B470000	Big cover of right box	1
31	65443B470000	SPRING ,RIGHT COVER BOX	1
32	65442B470000	Small cover of right box	1
33	65431B470000	Big cover of left box	1
34	65433B470000	SPRING ,LEFT COVER BOX	1
35	65432B470000	Small cover of left box	1
36	65401B470000	Foot protect board	1
37	65402B470000	FOOTBOARD (left)	1
38	65404B470000	FOOTBOARD (right)	1
39	51011B920000	Hook of helmet	1
40	65403B470000	Cover borad of frame number	1
41	65407B47TF00	COVER BORAD ,FUEL TANK(RED TF)	1
41	65407B47YP00	COVER BORAD ,FUEL TANK(YELLOW YP)	1
41	65407B47BC00	COVER BORAD ,FUEL TANK(BLACK BC)	1
41	65407B47GL00	COVER BORAD ,FUEL TANK(GREEN GL)	1
42	65801T020001	CLIP	10
43	B05074201305	TAPPING SCREW ST4.2×13	28
44	B01090601665	BOLT6×16MM	4
45	B01090603065	BOLT 6×30MM	1
46	B05074201605	TAPPING SCREW ST4.2×16	2
47	B05074001005	TAPPING SCREW ST4.0×10	2
48	B05074801605	TAPPING SCREW ST4.8×16	2
49	B13060601605	BOLT6×16MM	1
50	65802B310000	CLIP	2
51	B05074201305	TAPPING SCREW ST4.2×13	5
52	B05074801605	TAPPING SCREW ST4.8×16	5



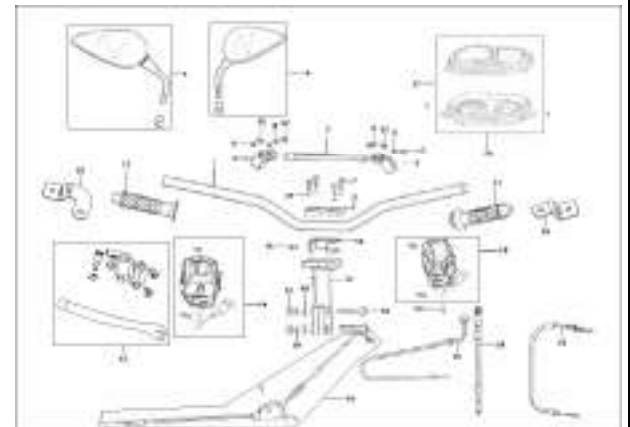
NO	CODE	ENGLISH DESCRIPTION	QTY
1	65718B470000	REAR FENDER	1
2	51100B470000	component of seat	1
3	51003B470000	rubber buffer	4
4	B13060601605	BOLT6×16MM	10
5	51001T430000	mounting axle of seat	1
6	B04070600053	NUT 6MM	7
7	51083B470000	mounted plate	1
8	B04000600053	NUT 6MM	2
9	51005B470000	bottom cover of helmet box	1
10	B05004201005	TAPPING SCREW 4.2×13	2
11	65801T020001	CLIP	2
12	51004B470000	helmet box	1
13	51080B470000	lose-leaf component of seat	1
14	51120B470000	BAND ASSY	1



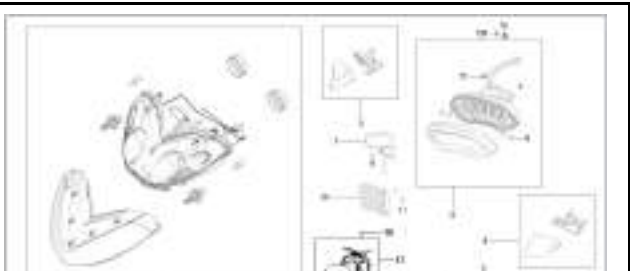
15	51121B470000	BAND	1
16	51123B470000	SCREW	2
17	65813B470000	COVER ,BATTERY BOX	1
18	65106B470000	FRONT FENDER II	1
19	65426B470000	FOOT PROTECT COVER, R	1
20	65422B470000	FOOT PROTECT COVER, L	1
21	65604B470000	RIGHT BAFFLED PLATE	1
22	65603B470000	LEFT BAFFLED PLATE	1
23	65602B47N600	RIGHT SIDE COVER	1
24	65601B47N600	LEFT SIDE COVER	1
25	65622B47HK00	DECORATIVE BOARD, RIGHT SIDE COVER	1
26	65621B47HK00	DECORATIVE BOARD, LEFT SIDE COVER	1
27	65606B47HK00	CONNECT BOARD, RIGHT SIDE COVER	1
28	65605B47HK00	CONNECT BOARD, LEFT SIDE COVER	1
29	65761B470000	REAR FENDER LOWER	1
30	65801T020001	CLIP	36
31	B05074001605	TAPPING SCREW 4.0×16MM	6
32	65313T480000	RUBBER CUSHION	2
33	B05004201365	TAPPING SCREW 4.2×13MM	36
34	B01090602065	BOLT6×20MM	2
35	65803S010000	NUT 6MM	2
36	B01090601665	BOLT6×16MM	2
37	65709B470000	REAR FENDER II	1
38	B0284060150A	SCREW M6×15.2	4
39	65710B470001	REAR FENDER, RH	1
40	65701B470001	REAR FENDER, LH	1
41	08051T020003	NUT M6	2
42	B02000601625	SCREW 6×16MM	2
43	B04000500055	NUT 5MM	2
44	B02000501225	SCREW 5×12MM	2
45	08252B470000	BRACKET LICENCE PLATE	1
46	86400K310001	REAR SIDE REFLECTOR	2
47	B05074801305	TAPPING SCREW 4.8×13MM	4



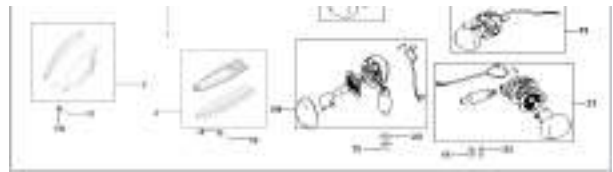
NO	CODE	ENGLISH DESCRIPTION	QTY
1	40101B470000	HANDLEBAR	1
2	40043B470000	FENDER ROD	1
3	40041B470000	INSTALLING BASE ,OF FENDER ROD LEFT	1
4	40042B470000	INSTALLING BASE ,OF FENDER ROD RIGHT	1
5	40460B470000	BACK MIRROR ASSY., LH.	1
6	40470B470000	BACK MIRROR ASSY., RH.	1
7	B0205060206A	SCREW 6×20MM	4
8	40047B470000	BUSH	2
9	40046B470000	BUSH	4
10	B02050602564	SCREW 6×25MM	2
11	40183B470000	HANDLEBAR BRACKET	1
12	40001B470000	GRIP,LEFT HANDLE	1
13	40080B470000	LEFT LEVER ASSY	1
14	40500B470000	LEFT HANDLE SWITCH ASSY.	1
15	B01090601264	BOLT 6×12MM	1
16	40060B470000	CLIP COMPONENT	1
17	40181B470000	LOW FIXED BASE ,HANDLEBAR	1
18	B02551005065	SCREW M10×1.25×50	2
19	B04011012555	NUT M10×1.25	2
20	40600B470000	RIGHT HANDLE SWITCH ASSY	1
21	40210B470000	GRIP ASSY RIGHT	1
22	B02000501025	SCREW 5×10MM	1
23	40270B470000	CABLE ASSY,REAR BRAKE	1
24	40300B470000	CABLE ASSY,THROTTLE	1
25	58900B470000	SEAT CABLE ASSY.	1
26	70000B470000	SPEEDOMETER ASSY.	1
27	B05074201605	TAPPING SCREW ,ST4.2×16	3
28	72900B470000	SPEEDOMETER CABLE COMP.	1
29	B07000001005	SPRING WASHER 10MM	2
30	B07030001005	WASHER 10MM	2
31	B07000000604	WASHER6MM	4
32	B02050602064	SCREW M6×20	2
33	08526B470000	FIXING BOARD TURN LIGHT LEFT	1
34	08527B470000	FIXING BOARD TURN LIGHT RIGHT	1



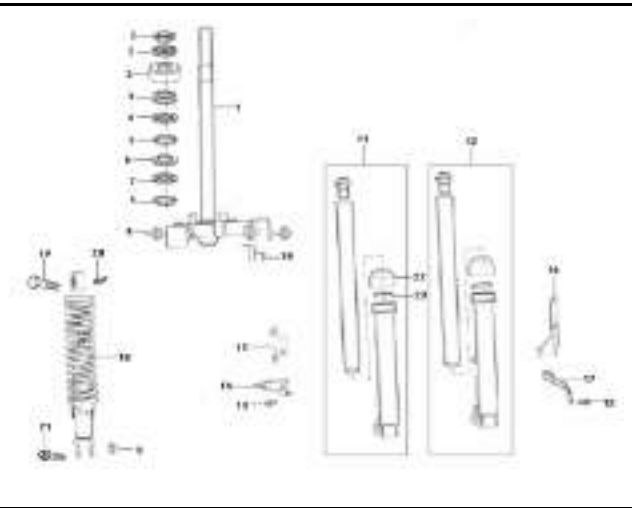
NO	CODE	ENGLISH DESCRIPTION	QTY
1	80000B470001	HEAD LIGHT ASSY. (E MARK)	1
2	83100B470000	ORNAMENT LIGHT FRONT LEFT	1
3	83300B470000	ORNAMENT LIGHT FRONT RIGHT	1
4	82000B470000	TAIL LIGHT ASSY.	1
5	83500B470000	ORNAMENT LIGHT REAR LEFT	1
6	83700B470000	ORNAMENT LIGHT REAR RIGHT	1
7	82900B470000	LIGHT LICENCE PLATE	1
8	B05004001205	TAPPING SCREW 4×12MM	4
9	B05004201605	TAPPING SCREW 4.2×13MM	1
10	86500K310000	REAR REFLECTOR	1
11	86505S010000	SPRING NUT	2
12	B04070600055	NUT 6MM	2



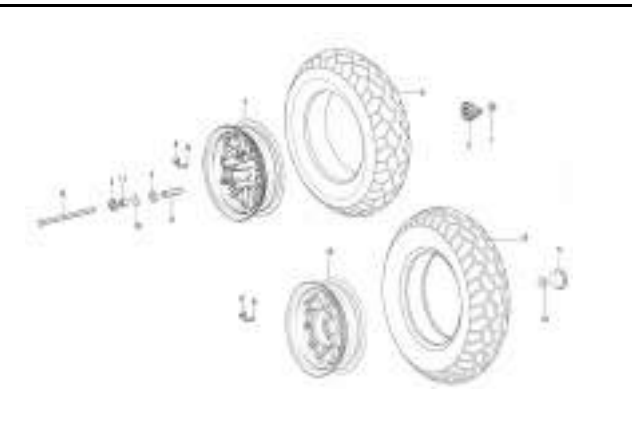
13	B13060601605	BOLT6×16MM	3
14	65803S010000	NUT 6MM	2
15	B04001012555	NUT M10×1.25	2
16	08051T020003	NUT M6	1
17	81300B920000	TURN LIGHT,FRONT.RIGHT	1
18	B02000501025	SCREW 5×10MM	2
19	81100B920000	TURN LIGHT,FRONT.LEFT	1
20	81500B920000	TURN LIGHT,REAR LEFT	1
21	81700B920000	TURN LIGHT,REAR.RIGHT	1
22	B07030001005	WASHER 10MM	2



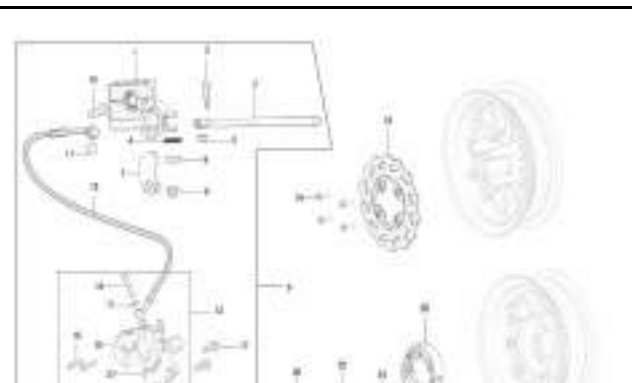
NO	CODE	ENGLISH DESCRIPTION	QTY
1	43100B470000	STEM, STEERING	1
2	43008B310000	NUT II	2
3	43005B920001	BALL RACE COVER	1
4	43001B920000	BALL RACE, CONNECTING	1
5	B06010140000	STEEL BALL3/16"	42
6	43003B920000	BALL RACE, 2	2
7	43004B920000	BALL RACE, 4	1
8	B01591003065	FLANGE BOLT 10×1.25×30MM	2
9	B04000800054	NUT 8MM	1
10	43035B910000	HOLDER, BRAKE HOSE 2	1
11	43300B470000	FR. R.CUSHION ASSY.	1
12	43200B470000	FR. L. CUSHION ASSY.	1
13	B01070601265	BOLT M6×12	2
14	43150B310000	CLIP, SPEEDOMETER CABLE	1
15	65140B470000	R. BRACKET, FR.FENDER	1
16	65130B470000	L. BRACKET, FR.FENDER	1
17	43021B910003	HOLDER, BRAKE HOSE 1	1
18	63800B47YF00	RR. ABSORBER COMP.(YELLOW YF)	1
19	B01141004063	BOLT W/HOLE 10×1.25×40MM	1
20	63016B070000	SPLIT PIN	1
21	B01090804064	FLANGE BOLT 8×40MM	1
22	43290K010000	DUST SEAL	2
23	43260K010000	OIL SEAL	2



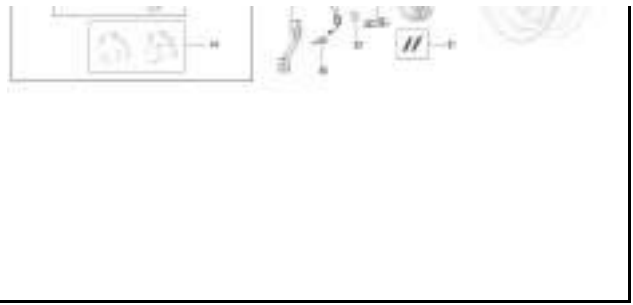
NO	CODE	ENGLISH DESCRIPTION	QTY
1	B04171212553	NUT M12×1.25	1
2	44200B91B500	SPEEDOMETER GEAR COMP.	1
3	B12016020100	BEARING	1
4	44600B910000	COLLAR FRONT WHEEL	1
5	54027B910000	TAPPO	1
6	B140107F1022	TIRE (OFF ROAD)120/90-10	1
6	B140507D1221	TIRE (ON ROAD) 120/70-12	1
7	44101B47B400	RIM FRONT WHEEL ASSY(OFF ROAD BLACK B4)	1
7	44101B91B400	RIM FRONT WHEEL ASSY(ON ROAD BLACK B4)	1
8	B14032201100	RIM, VALVE	2
9	B140422011C0	CAP, VALVE	2
10	44300B910000	OIL SEAL	1
11	44005B910000	L. COLLAR, FRONT WHEEL	1
12	44004G250000	AXLE, FR. WHEEL	1
13	B04171615064	NUT 16×1.5MM	1
14	B140108F1022	TIRE (OFF ROAD)130/90-10	1
14	B140508D1223	TIRE (ON ROAD)130/70-12	1
15	54100B47B400	RIM REAR WHEEL ASSY(OFF ROAD BLACK B4)	1
15	54100B91B400	RIM REAR WHEEL ASSY(ON ROAD BLACK B4)	1



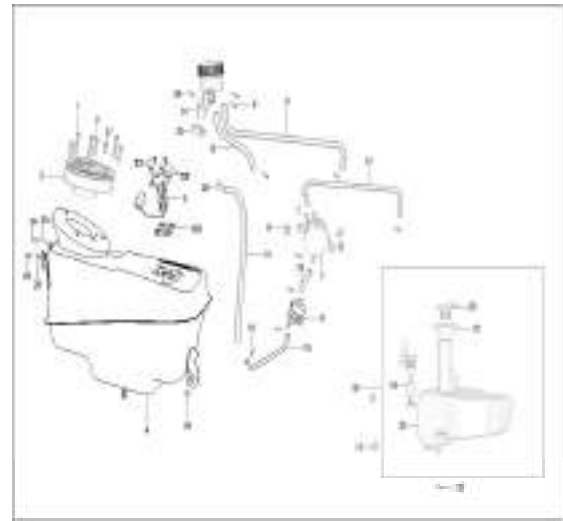
NO	CODE	ENGLISH DESCRIPTION	QTY
1	45009B300000	MASTER CYLINDER BODY	1
2	45022T030020	LEVER, FR. DISC BRAKE	1
3	45024B920000	BOLT 6MM	1
4	45057G070000	TENSION SPRING,LEVER	1
5	B04160600025	NUT 6MM	1
6	45900B470000	FRONT DISK BREAK(OFF ROAD)	1set
6	45900B470001	FRONT DISK BREAK(ON ROAD)	1set
7	45023B300000	MASTER CYLINDER BRACKET	1
8	B01070602365	BOLT 6×23MM	1
9	B090106022A5	COLUMN PIN	1
10	45037B310000	UNION BOLT	2
11	45029J000000	PLATE WASHER	4
12	45200B470000	FR. BRAKE HOSE	1
13	45500B910000	CALIPER ASSY.	1
14	45110B030000	BRAKE PAD KIT	1set
15	45001B030000	CALIPER BODY	1
16	45053G040000	GUIDE POLE	2



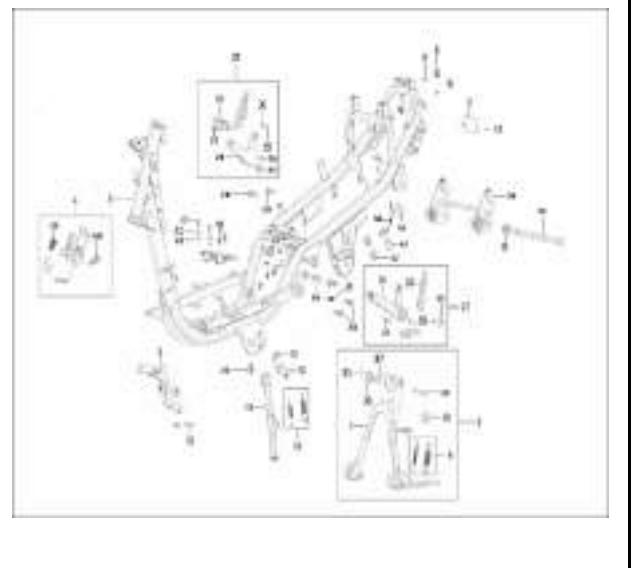
17	B01090803564	BOLT 8x35 MM (OFF ROAD)	2
17	45039T100001	BOLT 8x36 MM (ON ROAD)	2
18	45033B470000	BRAKE DISC (OFFROAD)	1
18	45033B940000	BRAKE DISC (ON ROAD)	1
19	45036B310000	BOLT	4
20	54200B470000	BRAKE SHOE ASSY	1set
21	54001B470000	SPRING	2
22	54008B920000	TENSION SPRING	1
23	54002B910000	INDICATOR PLATE	1
24	54003B910000	CAM SHAFT	1
25	08012B910000	BOLT 6x30MM	1
26	54120B450000	CAM SHAFT LEVER	1
27	45180B470000	BRAKE SUPPORT (OFFROAD)	1
27	45180T100000	BRAKE SUPPORT (ON ROAD)	1



NO	CODE	ENGLISH DESCRIPTION	QTY
1	B0280050300A	SCREW 5x30MM	3
2	B0280050140A	SCREW 5x14MM	3
3	50200B470001	LOCK ASSY,FUEL TANK	1
4	50100B470001	FUEL TANK ASSY	1
5	50800B470001	SENDER UNIT	1
6	B01090601665	BOLT6x16MM	2
7	50850B410001	OIL PUMP	1
8	50340T020000	FUEL FILTER ASSY.	1
9	B17010090003	STEEL WIRE CLIP ø9	6
10	B17010080003	STEEL WIRE CLIP ø8	4
11	B16010523301	OIL PIPE I ø5x2x330	1
12	B16010423301	OIL PIPE II ø4.5x2x330	1
13	B16010521401	OIL PIPE III ø5x2x140	1
14	B16010724001	OIL PIPE IV ø7x2x400	1
15	B16010521901	OIL PIPE V ø5x2x190	1
16	B16010520851	OIL PIPE VI ø5x2x85	1
17	B01090601665	BOLT6x16MM	2
18	64000B300000	OIL TANK ASSY.	1
19	64100B310000	OIL LEVER GAUGE ASSY.	1
20	64090B310000	CAPASSY, OIL TANK	1
21	64012B300000	RUBBER, OIL GUIDE	1
22	64001B300000	OIL TANK	1
23	50307B910000	CLIP 8	1
24	B13040501004	SCREW WWASHER 5x10MM	2
25	B07000000503	SPRING WASHER 5MM	2
26	B13060601605	BOLT6x16MM	1
27	B0280050140A	SCREW 5x14MM	1
28	B17010120003	STEEL WIRE CLIP ø12	1
29	B17010130003	CLIP ø13.5	1
30	49855W110000	CLIP ø16.5	1
31	50301B470000	PIPE RETURN	1
32	B13010501405	SCREW WWASHER M5X14	4
33	50004B91000	SENDER UNIT GASKET	1

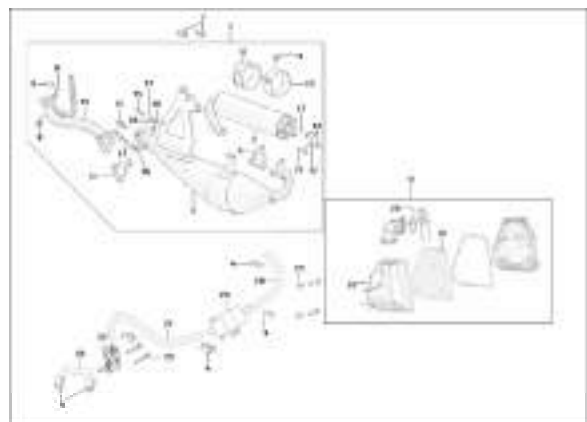


NO	CODE	ENGLISH DESCRIPTION	QTY
1	57100B470000	FRAME COMP.	1
2	57001B470004	VIN. PLATE (OFF ROAD)	1
2	57001B470005	VIN. PLATE (ON ROAD)	1
3	59400B470000	BRACKET ASSY ,FRONT COVER	1
4	88100B470001	IGNITION SWITCH ASSY.	1
5	58500B470002	MAIN STAND ASSY.	1
6	58510B910000	SPRING ASSY, MAIN STAND	1
7	58520B470002	MAIN STAND COMP.	1
8	47028G220000	BUSH RUBBER	6
9	65517N100000	BUSH	6
10	B01010603523	BOLT 6x35MM	2
11	B04171212555	NUT M12x1.25	1
12	B100432007P0	RIVET 3.2x7	2
13	58700B470000	SIDE STAND ASSY	1
14	57006B910000	SPRING HOOK, SIDE STAND	1
15	57005B920000	BOLT, SIDE STAND	1
16	57010B910000	SPRING ASSY, SIDE STAND	1
17	50008J040000	low buffer ped of oil tank	2
18	58301B920000	fixed axle of hanger	2
19	B04171012555	NUTM10x1.25	2
20	B02050803064	BOLT 8x30MM	4
21	58210B470000	REAR pedal components (LH)	1
22	58310B470000	rear pedal components (RH)	1
23	B04070800055	NUT M8	1
24	58286S010000	rear pedal (RH)	1
25	58451S010000	moumnted plate of pedal	2
26	B0882000050A	stell gasket	2



27	58217S010000	mounted pin roll	2
28	58311B470000	rear pedalstal (RH)	1
29	B06010200000	6.35 stell ball	2
30	58262S010000	pedal spring	2
31	58211B470000	mounted hanger of pedal (LH)	1
32	58266S010000	REAR pedal (LH)	1
33	B01070601665	BOLT M6×16	1
34	58320B470000	E/G BRKT COMP.	1
35	B09002502013	SPIN 2.5×20	1
36	B07030001003	WASHER 10	1
37	B190101000A0	O-RING 10×1.8	1
38	58507B910000	STOPPER, MAIN STAND	1
39	58501B910000	PIN, MAIN STAND	1
40	08002B920000	BOLT 6×16	1
41	B02000501625	SCREW M5×16	2
42	B01090601265	BOLT M6×12	2
43	B07000000505	SPRING WASHER 6	2
44	B07030000505	WASHER 5	2
45	58303B910000	E/G MOUNTING BOLT	1
46	95701T180000	BRACKET ALARM SYSTEM	1
47	B01090601265	BOLT M6×12	2

NO	CODE	ENGLISH DESCRIPTION	QTY
1	47100B470003	MUFFLER ASSY.	1
2	48200B910000	MUFFLER CANISTER ASSY.	1
3	B01090602064	BOLT 6X16MM	1
4	49805B920000	SPRING II, LOCK φ17.5	6
5	47490B910005	CUSHION	1
6	47200B470001	MUFFLER ASSY.	1
7	B01090802065	BOLT 8X20MM	2
8	B01090601665	BOLT6×16MM	2
9	47800B070000	GASKET, EXHAUST PIPE	1
10	47833B140005	ADIABATIC RUBBER	1
11	48831B140005	MUFFLER HOOP	1
12	47006J010000	NUT 6MM	3
13	47500B470004	EXHAUST PIPE COMP.	1
14	47490B940004	GASKET, FLANGE	1
15	B0205060256A	SCREW M6X25	2
16	08001B920000	SCREW 6×25MM	1
17	B07000000604	WASHER6MM	5
18	B04000600054	NUT 6MM	2
19	49000B470000	AIR CLEANER ASSY.	1
20	49200B910000	FILTER	1
21	B01090602065	BOLT6×20MM	2
22	49016B910000	CLIP 42.5	1
23	49870B140000	AIR CLEANER,SMALL	1
24	B05074201265	TAPPING SCREW 4.2X1.2MM	3
25	B01070604064	SCREW 6×12MM	2
26	B07030000604	WASHER 6	2
27	49851B470000	HOSE ONE WAY VALVE CONNECT AIR CLEANER SMALL	1
28	49932B400000	HOSE II	1
29	49850W080000	HOSE ONE WAY VALVE CONNECT MUFFLER	1
30	49840W110000	ONE WAY VALVE II	1



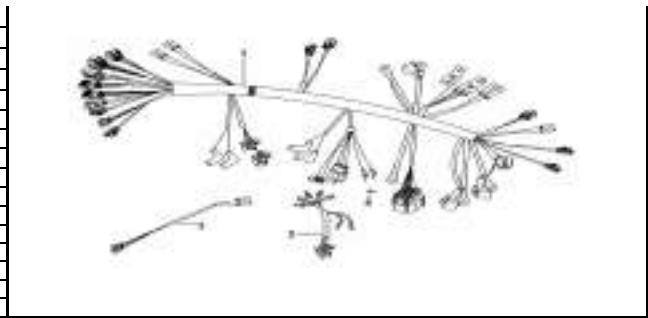
NO	CODE	ENGLISH DESCRIPTION	QTY
1	94400T020001	REC. REGULATOR COMP.	1
2	B01090601265	BOLT M6×12	4
3	96007B910000	CUSHION C.D.I.	1
4	299051070001	C.D.I. UNIT	1
5	96500B470000	FLASHER RELAY COMP	1
6	95100B920000	HORN COMP (E MARK)	1
7	96200B310000	IGNITION COIL ASSY.	1
8	96100B300000	BATTERY ASSY.	1
9	B13040502005	SCREW 5×20MM	1
10	94000B400000	STARTER RELAY COMP.	1
11	B07030000603	WASHER 6	2
12	B07000000603	SPRING WASHER 6	2
13	B04000600053	NUT 6MM	2
14	95730B920002	HORN, ALARM	1
15	95500B460000	ALARM SYSTEM ASSY	1
16	96001B47001Z	C.D.I ASSY.COMP	1
17	B13040501205	SCREW /W/WASHER M5×12	2



RIC SYSTEM

NO	CODE	ENGLISH DESCRIPTION	QTY
----	------	---------------------	-----

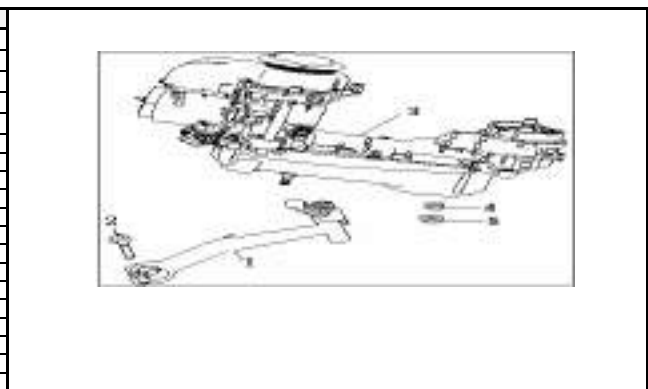
1	92000B470002	WIRE HARNESS ASSY.	1
2	75000B470000	WIRE HARNESS SPEEDOMETER ASSY	1
3	40750B470000	WIRE HARNESS BRAKE CABLE	1
4	B01090501265	BOLT 5x12	1



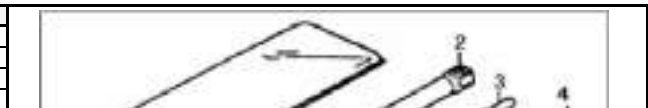
NO	CODE	ENGLISH DESCRIPTION	QTY
1	05532B470000	STICKER EPA	1
2	05594B470000	STICKER	1
3	05521K310001	STICKER PSF	2
4	05523B470000	STICKER FRONT COVER LF.FOR RED ,YELLOW ,GREEN VEHICLE	1
4	05523B470010	STICKER FRONT COVER LF.FOR BLACK VEHICLE	1
5	05524B470000	STICKER FRONT COVER RH.FOR RED ,YELLOW ,GREEN VEHICLE	1
5	05524B470010	STICKER FRONT COVER RH.FOR BLACK VEHICLE	1
6	05571B470020	STICKER REAR FENDER FOR RED VEHICLE	1
6	05571B470030	STICKER REAR FENDER FOR YELLOW VEHICLE	1
6	05571B470040	STICKER REAR FENDER FOR GREEN VEHICLE	1
6	05571B470010	STICKER REAR FENDER FOR BLACK VEHICLE	1
7	05511B470002	STICKER SIDE COVER (on road)	2
7	05511B470001	STICKER SIDE COVER (off road)	2
8	05511B470000	STICKER SIDE COVER LEFT ,RIGHT.	2
9	05536B470001	STICKER 2,NOISE	1
10	05581B470001	TIRE PRESSURE on road	1
10	05581B470000	TIRE PRESSURE off road	1
11	05536B470000	STICKER 1,NOISE	1
12	05535K310000	STICKER WARNING	1
13	02401B470020	SPECIFICATION	1
14	02421K310000	GUARANTEE	1
15	02430K310000	FOLDER	1
16	05521B450000	STICKET "BENELLI"	1



NO	CODE	ENGLISH DESCRIPTION	QTY
1	08350B040000	KICK STARTER LEVER	1
2	B01030602565	BOLT M6x25	1
3	C2107134CR00	ENGINE COMP	1
4	B07000000604	WASHER6MM	1
5	B07030000604	WASHER 6	1



NO	CODE	ENGLISH DESCRIPTION	QTY
1	02110B910000	TOOL BAG	1
2	02102B910000	SPARK PLUG SOCKET	1
3	02101B910000	SPARK PLUG SOCKET HANDLE	1
4	02103B910000	SCREW DRIVER	1

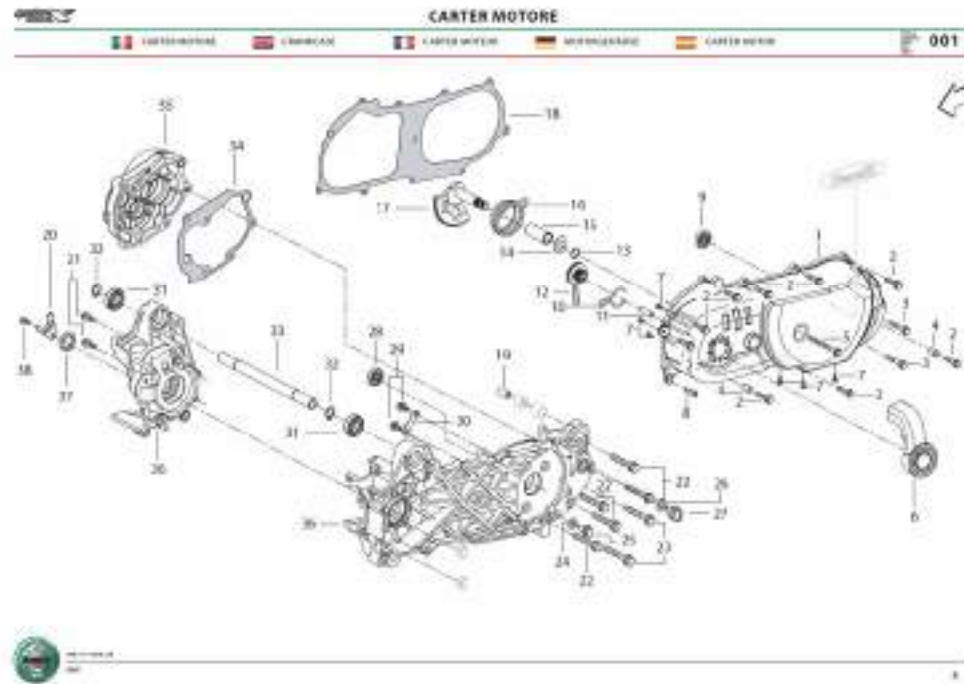


5	02104B910000	HANDLE	1	
6	02114B910000	FILTER,OIL TANK	1	
7	02115B910000	RR.ABSORBER ADJUSTER	1	
8	02117B920000	WRENCH 35	1	

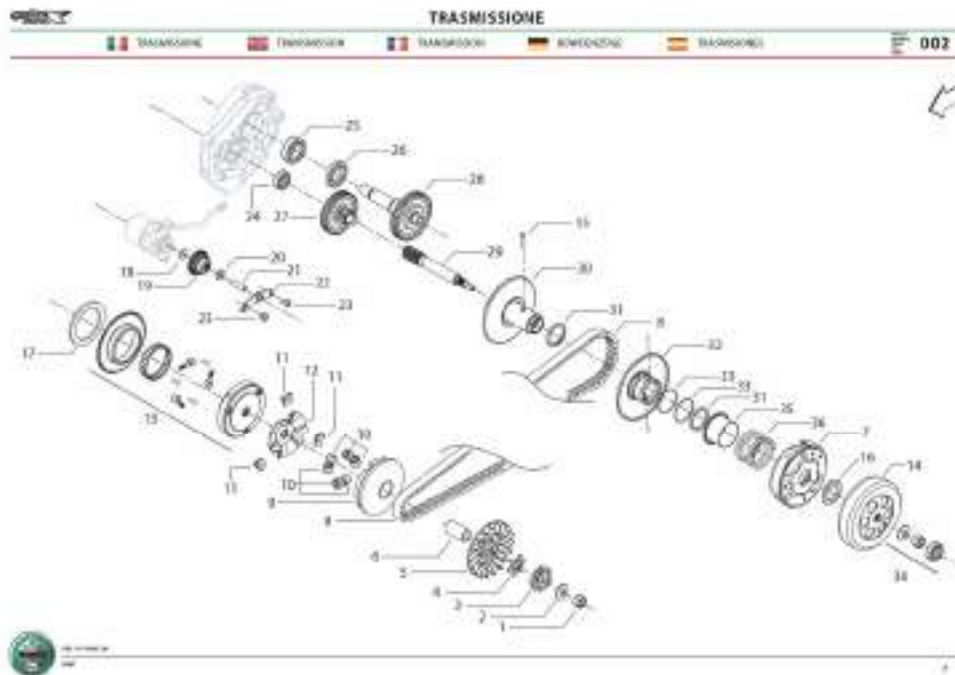


ENGINE PARTS LIST OF X50

NO	CODE	ENGLISH DESCRIPTION	QTY
1	207200.160000	CARTER COVER	1
2	301310602562	SCREW	10
3	301310603562	SCREW	1
4	320086100143	DOWEL	2
5	301310606562	SCREW	1
6	207219.004000	MANIFOLD	1
7	3052035012F5	SCREW	6
8	302260602065	SCREW	1
9	24209G02F000	BEARING	1
10	17418G02F930	SPRING	1
11	26128G02F000	PIN	1
12	17415G02F000	GEAR	1
13	308090150010	SNAP RING	1
14	307991005552	WASHER	1
15	17413G02F00B	BUSH	1
16	17407G02F000	SPRING	1
17	17415G02F000	FLANGE	1
18	207208.009000	CARTER COVER GASKET	1
19	26108G02F000	BUSH	1
20	26214G02F910	PLATE	1
21	301310603565	SCREW	6
22	301310805065	SCREW	5
23	301310805565	SCREW	2
24	18105H03F000	WASHER	1
25	301310801605	SCREW	1
26	26102G02F000	O-RING	1
27	206407.004081	OIL PLUG	1
28	B12016620300	ROLLER BEARING	1
29	B02000601262	SPECIAL SCREW	2
30	26214B09F000	BEARING LOCK	1
31	B12016600300	BALL BEARING	2
32	B08010001700	SNAP RING	2
33	10505-G06	SPACER	1
34	214201.004000	GASKET	1
35	10570-B08-12	COVER	1
36	15007107001Z	COUPLE CRANKCASE	1
37	26215G02F000	SEAL RING	1
38	301310601263	SCREW	1



NO	CODE	ENGLISH DESCRIPTION	QTY
1	B04031212553	NUT	1
2	15112G02F010	WASHER	1
3	213203.001161	RETAINER	1
4	24109G02F000	PLATE	1
5	24108G02F000	FRONT FIXED PULLEY	1
6	24105G02F000	BUSH	1
7	24301B01F000	CLUTCH	1
8	24107B01F000	DRIVE BELT	1
9	24101G02F000	FRONT MOBILE PULLEY	1
10	213119.004000	WEIGHT	6
11	24104G02F000	SLIDER	3
12	24103G02F000	CAP	1
13	34110G02F00A	COMPLETE STARTER CLUTCH	1
14	24700G02F000	CLUTCH HOUSING	1
15	24208G02F000	PIN	1
16	24305G02F940	NUT	1
17	34123G02F000	FLANGE RING GEAR	1
18	34122G02F000	WASHER	1
19	34126G02F000	GEAR	1
20	34130G02F000	WASHER	1
21	26128G02F000	PIN	1
22	34125G02F000	PLATE	1
23	301310601062	SCREW	2
24	B12016620000	BEARING	1
25	B12016600400	BEARING	1
26	17317B09F000	SEAL RING	1
27	17800B09F000	GEAR	1
28	214104.014000	OUTPUT SHAFT ASSEMBLY	1
29	24201B09F000	DRIVE SHAFT	1
30	24204G02F000	PULLEY	1
31	24206G02F000	OIL SEAL	1
32	24205G02F000	PULLEY	1
33	24207G02F000	O-RING	2
34	200302080000	HEXAGON NUT	1
35	24309G02F930	RETAINER	1
36	24308B01F000	SPRING	1



20	15211G02F000	DRIVING GEAR	1
21	15106G02F910	SNAP RING	2



NO	CODE	ENGLISH DESCRIPTION	QTY
1	3390005E0170	COMPLETE CARBURATEUR	1
2	202104.006472	CLAMP	1
3	32200G02F000	INTAKE MANIFOLD	1
4	202306.002000	GASKET	1
5	32300G02F000	VALVE	1
6	32701B01F000	GASKET	1
7	32620B01F000	FLOAT	1
8	32619B01F000	FLOAT PIN	1
9	32609B01F000	LEAST JET	1
10	224202.104000	MAIN JET	1
11	32511B01F000	GAS VALVE	1
12	32508B01F000	NEEDLE LOCK	1
13	32510B01F000	NEEDLE	1
14	32612B01F000	STARTER AUTOMATIC	1
15	219101.008000	COMPLETE OIL PUMP	1
16	B16010423601	DEPRESSURE LINE	1
17	B16010521201	1-FUEL PIPE	1
18	B16010522301	2-FUEL PIPE	1

