

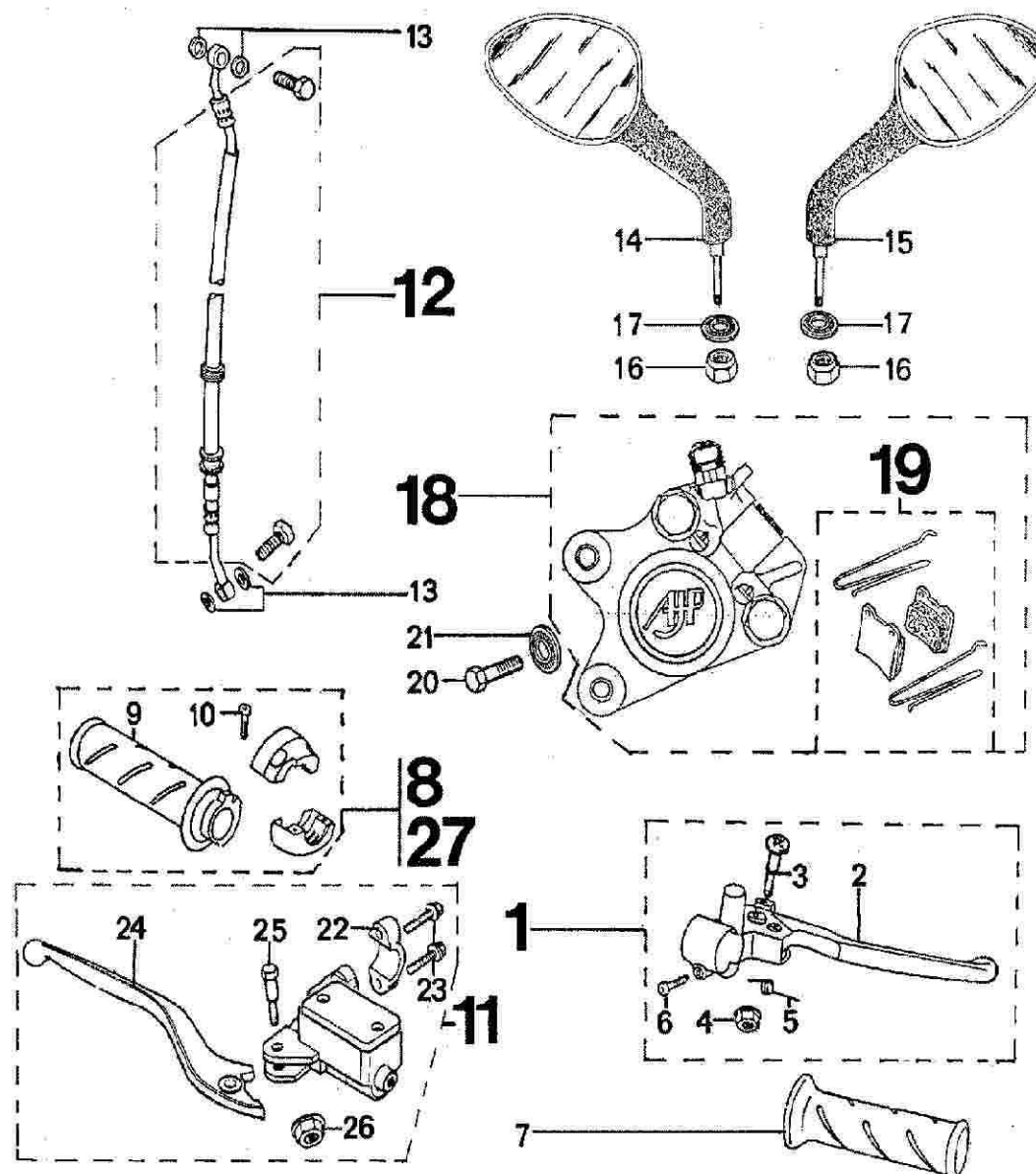
N° REF. C QTY DESCRIPTION

1	729539	1	BRAKE LEVER + BRACKET
2	752056 *	1	LH BRAKE LEVER
3	752055	1	PIN SCREW
4	837013	1	FLANGE NUT M6X1,00
5	750222	1	LEVER SPRING
6	711649	1	BOLT6-16
7	720890 *	1	LH GRIP RUBBER SLEEVE
8	730618 *	1	HANDLE FOR SCREWED GAS THROTTLE
9	752053 *	1	TURNING HANDLE R.H.
10	704355	2	HEXAGON SCREW M5X0,80-16
11	733774	1	RH MASTER CYLINDER + LEVER
12	733776	1	HYDRAULIC HOSE SET
13	729739	4	COVER GASKET 14-10-2
14	731975	1	LH MIRROR
15	733927	1	RH REAR MIRROR
16	750761	2	LOCKNUT M8X1,25
17	858046	2	SPRING WASHER 8-16-1.4
18	736505	1	BRAKE CALIPER ASSY
19	752816	1	BRAKE PAD SET + FIXING
20	710296	2	HEXAGON SCREW M8X1,25-30
21	725083	2	CONICAL WASHER 8,4-16-1,4
22	733796	1	TUBE CLIP 1/2
23	729418	2	HEAD CAP SCREW M6X1,00-25
24	752868	1	RH BRAKE LEVER
25	752867	1	PIN SCREW
26	837013	1	FLANGE NUT M6X1,00
27	735930	1	HANDLE FOR CLIPPED GAS THROTTLE

BRAKE CALLIPER (A.J.P)

I 13

* DO NOT FORGET TO SPECIFY COLOUR



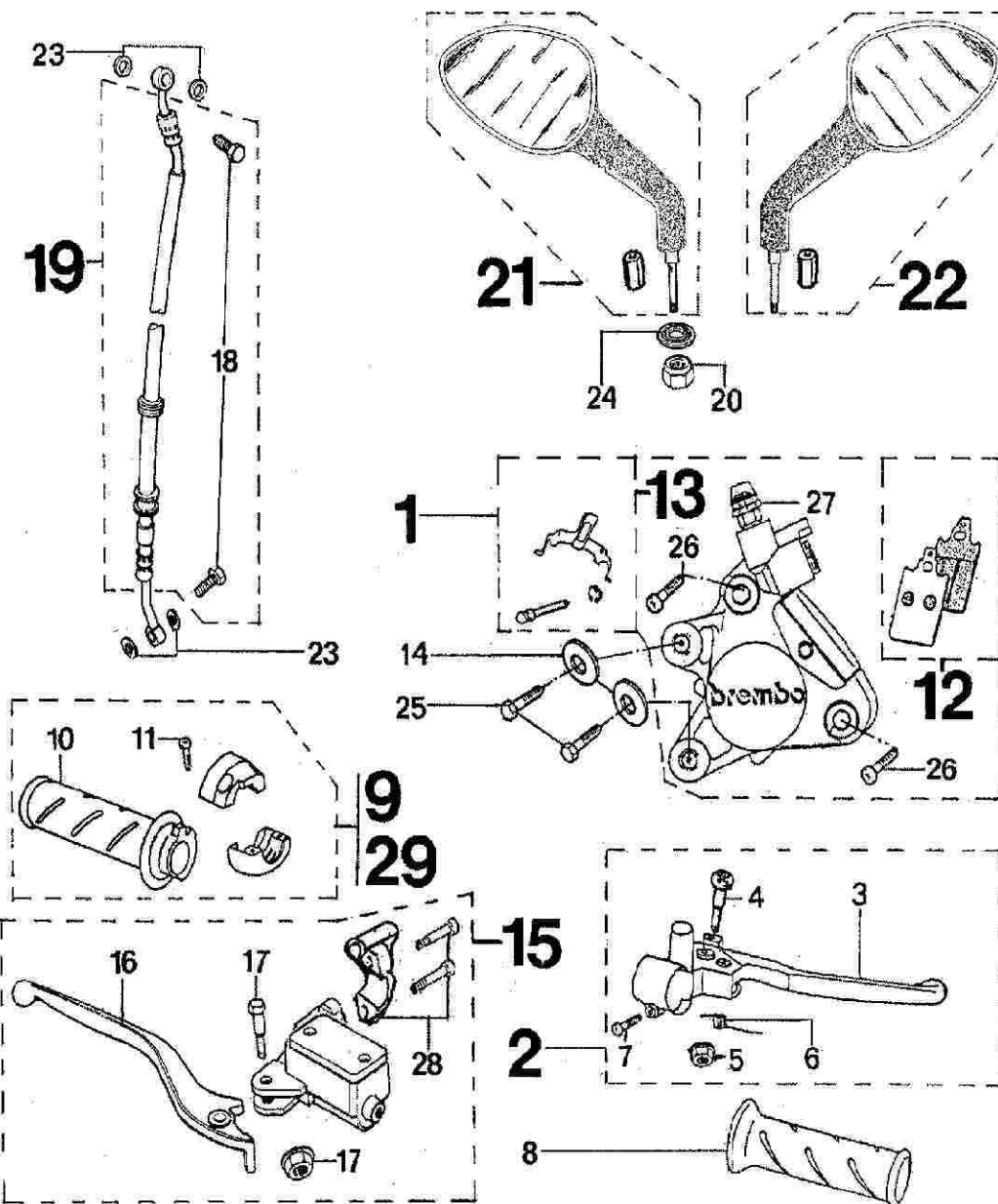
N° REF. C QTY DESCRIPTION

1	731038	1	BRAKE CALIPER ASSY
2	729539	1	BRAKE LEVER + BRACKET
3	752056 *	1	LH BRAKE LEVER
4	752055	1	PIN SCREW
5	837013	1	FLANGE NUT M6X1,00
6	750222	1	LEVER SPRING
7	711649	1	BOLT6-16
8	720890 *	1	LH GRIP RUBBER SLEEVE
9	730618 *	1	HANDLE FOR SCREWED GAS THROTTLE
10	752053 *	1	TURNING HANDLE R.H.
11	704355	2	HEXAGON SCREW M5X0,80-16
12	752743	1	BRAKE PAD SET
13	752745	1	PAD FIXING SET
14	725083	2	CONICAL WASHER 8,4-16-1,4
15	731037	1	RH MASTER CYLINDER+LEVER
16	752749	1	RH BRAKE LEVER
17	752748	1	PIN SCREW
18	752104	2	HOSE FITTING SCREW
19	732385	1	HYDRAULIC HOSE SET
20	750761	1	LOCKNUT M8X1,25
21	731975	1	LH MIRROR
22	731974	1	RH MIRROR
23	729739	4	COVER GASKET 14-10-2
24	858046	1	SPRING WASHER 8-16-1.4
25	710296	2	HEXAGON SCREW M8X1,25-30
26	706386	2	HEAD CAP SCREW M8X1,25-20
27	752744	1	BLEED PLUG WITH CAP
28	752838	1	FLANGE
29	735930	1	HANDLE FOR CLIPPED GAS THROTTLE

BRAKE CALLIPER (BREMBO)

I 09

* DO NOT FORGET TO SPECIFY COLOUR

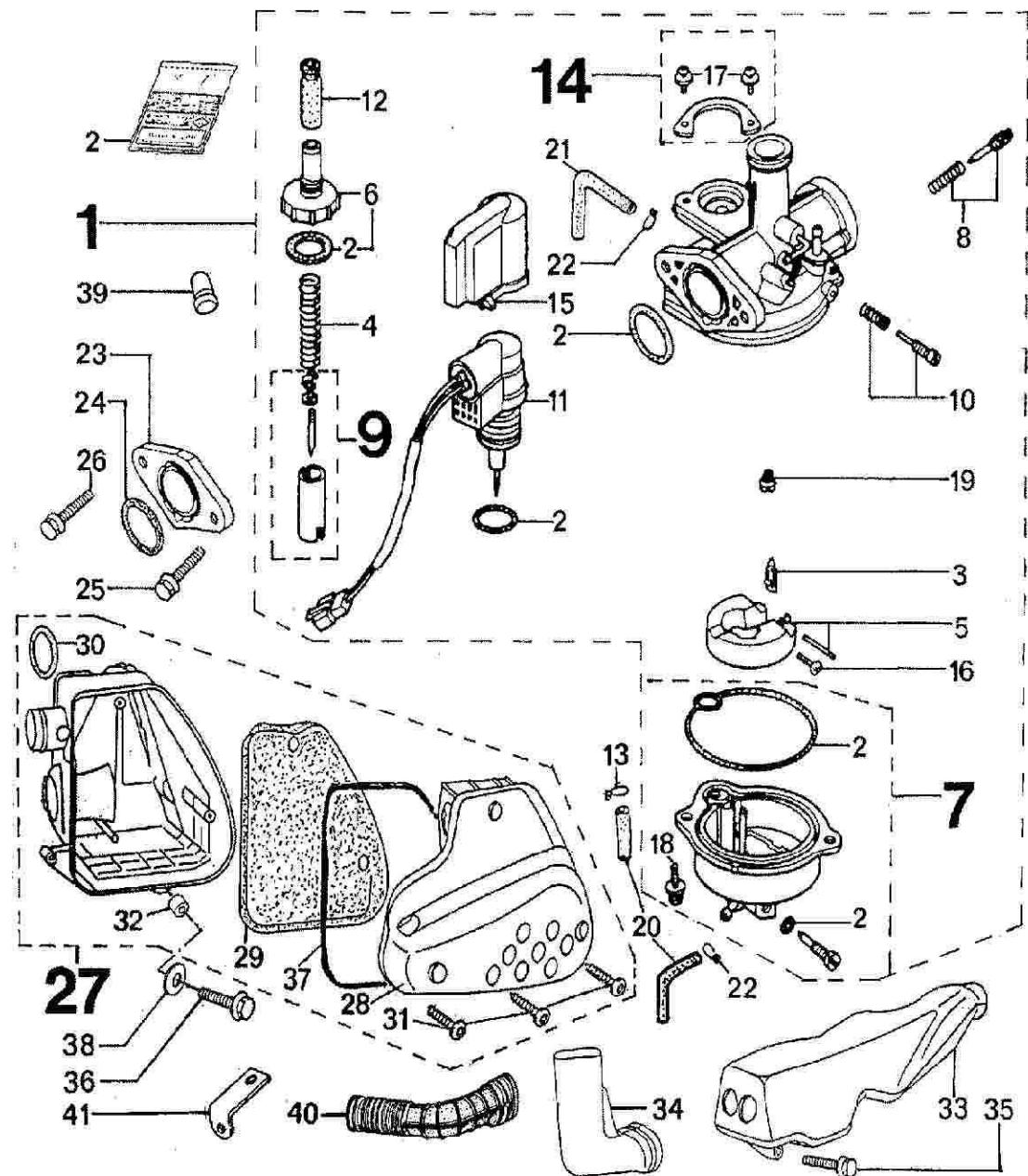


N° REF. C QTY DESCRIPTION

1	735357	1	CARBURETTOR PA 341
2	752423	1	GASKET SET
3	752417	1	FLOAT VALVE
4	752414	1	SPRING
5	752404	1	FLOAT SET
6	752412	1	TOP SET
7	752406	1	FLOAT CHAMBER SET
8	752408	1	MIXTURE ADJUSTING SCREW SET
9	752413	1	THROTTLE VALVE WITH NEEDLE
10	752407	1	STOP SCREW SET
11	752403	1	AUTOMATIC CHOKE
12	56310	1	CAP
13	752421	1	TUBE CLIP
14	752415	1	BRAKE PAD SET
15	752405	1	CAP
16	752422	1	FILLISTER CURVED HEAD
17	727859	2	FILLISTER-CURVED-WIDE HEAD 4-10
18	68150	2	FILLISTER-CURVED HEAD M4X0,70-15
19	752730	1	JET 72
20	61764	1	TUBE (PER METER)
21	752409	1	BREATHER HOSE
22	752410	2	TUBE CLIP
23	713353	1	ISOLATION SPACER
24	713354	1	O'RING SEAL 20,6-1,9
25	706561	1	FLANGE SCREW M6X1,00-28
26	706565	1	FLANGE SCREW M6X1,00-50
27	730200	1	AIR CLEANER ASSY
28	730197	1	AIR CLEANER COVER
29	730199	1	FILTER ELEMENT
30	730201	1	O'RING SEAL 22,5X3
31	726456	3	ROUND-HEAD SCREW 4X0,70-14
32	730202	1	SPACER BUSCH
33	730205	1	DUCT AIR CLEANER CASE
34	730343	1	DUCT AIR CLEANER CASE
35	730328	1	SELF TAPING SCREW
36	730556	1	FLANGE SCREW 6X1,00-25
37	730359	1	COVER GASKET
38	853214	1	PLAIN WASHER 6.4-14-1.2
39	718876	1	CAP

CARBURETTOR

E 12

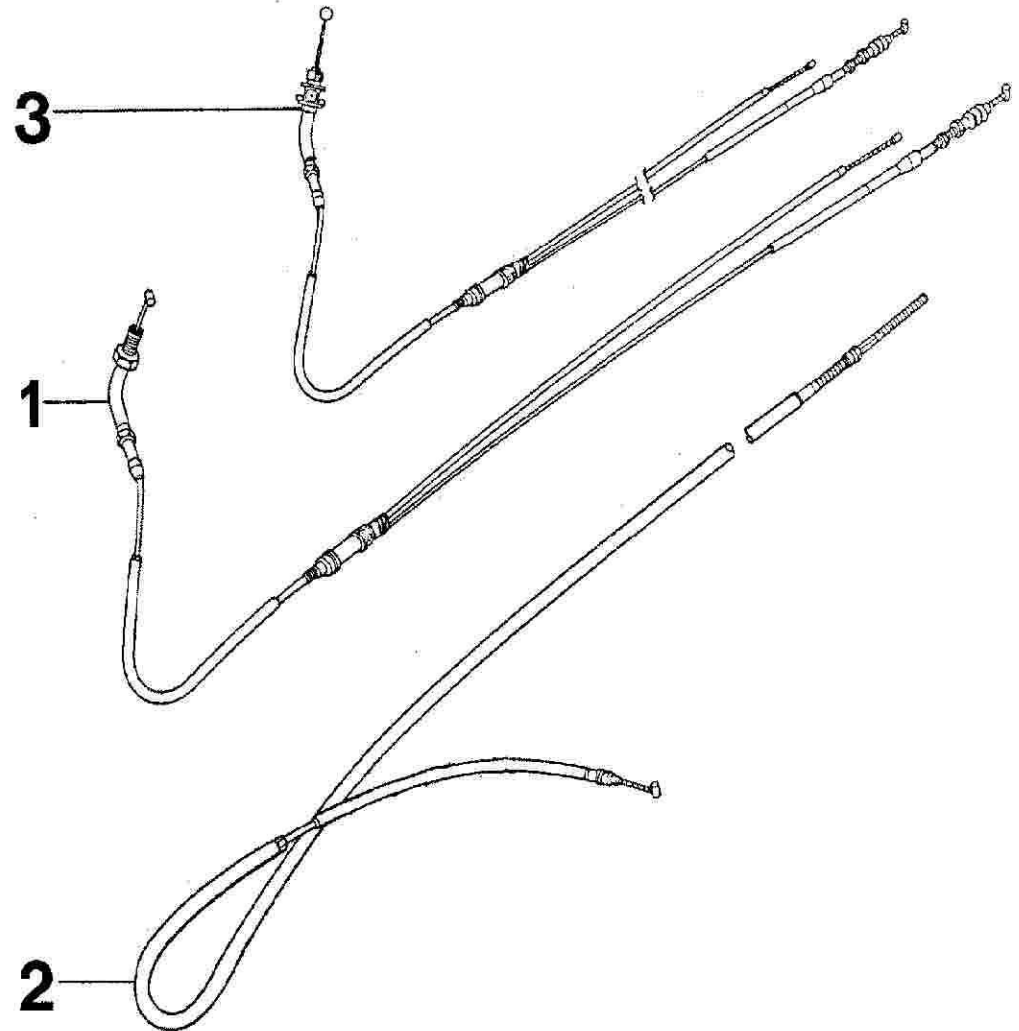


N° REF. C QTY DESCRIPTION

CONTROLS

F 02

1	730017	1	THROTTLE CONTROL ASSY
2	730828	1	REAR BRAKE CONTROL
3	735932	1	THROTTLE CONTROL ASSY WITH NUT

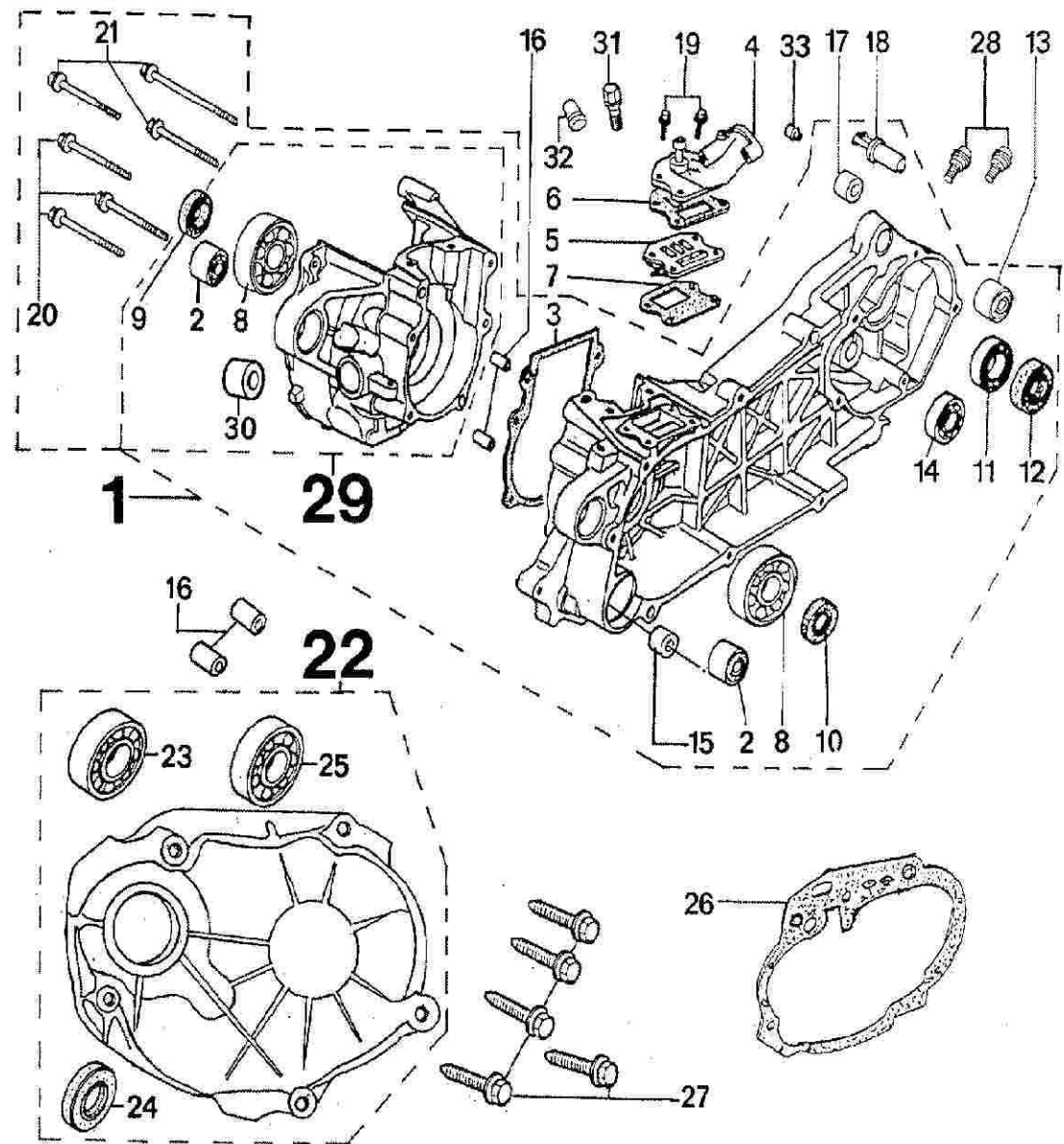


N° REF. C QTY DESCRIPTION

MANUAL TAP GASOLINE

G 04

1	752997	1	CRANKCASE ASSY
2	706421	2	SILENTBLOCK
3	737847	1	CRANKCASE GASKET
4	733441	1	INTAKE PIPE WITH INJECTING
5	731791	1	REED VALVE
6	737855	1	REED VALVE GASKET
7	737854	1	REED VALVE GASKET
8	722483	2	BALL BEARING 20-52-12
9	711824	1	OIL SEAL 15,6-25,6-7
10	720960	1	OIL SEAL 20-30-07
11	723307	1	BALL BEARING 20-42-12
12	723285	1	OIL SEAL 26-42-07
13	706574	1	SILENTBLOCK
14	706433	1	BALL BEARING 12-32-10
15	728849	1	SHOULDER 8-12-8
16	706437	4	DOWEL PIN 10-20
17	731979	1	RING 13,7-17-20
18	730685	1	BRAKE CAM (WITHOUT THREAD)
19	706561	4	FLANGE SCREW M6X1,00-28
20	706564	3	FLANDE SCREW M6X1,00-45
21	706567	3	FLANGE SCREW HM6X1,00-70
22	729792	1	TRANSMISSION COVER ASSY
23	722669	1	BALL BEARING 15-35-11
24	719068	1	OIL SEAL 17-30-06
25	725461	1	BALL BEARING 17-40-12
26	737840	1	CRANKCASE GASKET
27	730329	5	SELF TAPING SCREW HE M6-40
28	705096	2	FLANGE SCREW M8X1,25-14
29	733199	1	RH TRANSMISSION
30	731935	1	BUSCH ROTOR
31	719921	2	DISMANTLED SCREW M6X1,00-28
32	718876	1	CAP
33	724146	2	STOP

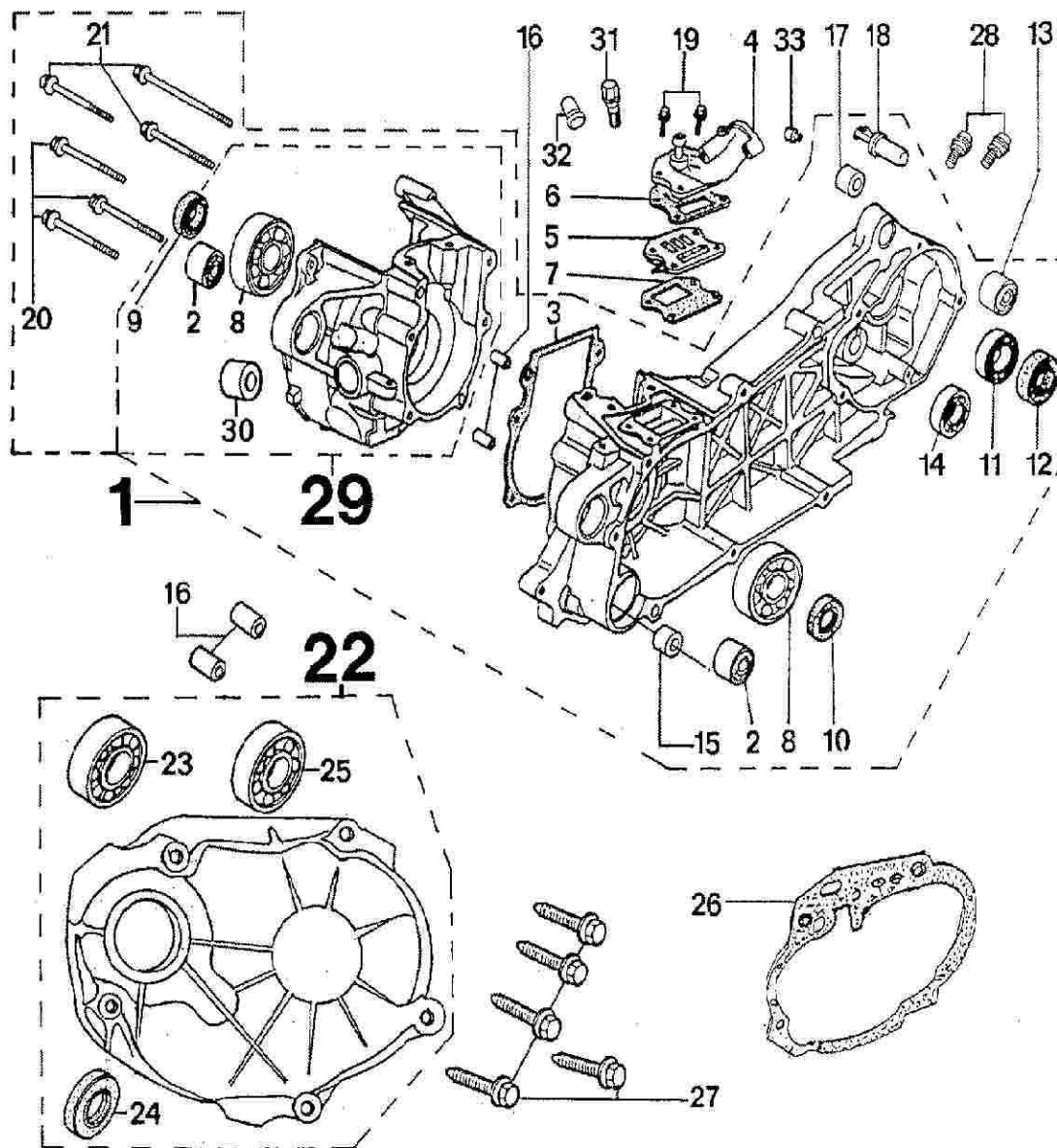


N° REF. C QTY DESCRIPTION

MANUAL TAP GASOLINE

G 02

1	752813	1	CRANKCASE ASSY
2	706421	2	SILENTBLOCK
3	737847	1	CRANKCASE GASKET
4	733441	1	INTAKE PIPE WITH INJECTING
5	731791	1	REED VALVE
6	737855	1	REED VALVE GASKET
7	737854	1	REED VALVE GASKET
8	722483	2	BALL BEARING 20-52-12
9	711824	1	OIL SEAL 15,6-25,6-7
10	720960	1	OIL SEAL 20-30-07
11	723307	1	BALL BEARING 20-42-12
12	723285	1	OIL SEAL 26-42-07
13	706574	1	SILENTBLOCK
14	706433	1	BALL BEARING 12-32-10
15	728849	1	SHOULDER 8-12-8
16	706437	4	DOWEL PIN 10-20
17	731979	1	RING 13,7-17-20
18	730685	1	BRAKE CAM (WITHOUT THREAD)
19	706561	4	FLANGE SCREW M6X1,00-28
20	706564	3	FLANDE SCREW M6X1,00-45
21	706567	3	FLANGE SCREW HM6X1,00-70
22	729792	1	TRANSMISSION COVER ASSY
23	722669	1	BALL BEARING 15-35-11
24	719068	1	OIL SEAL 17-30-06
25	725461	1	BALL BEARING 17-40-12
26	737840	1	CRANKCASE GASKET
27	730329	5	SELF TAPING SCREW HE M6-40
28	705096	2	FLANCE SCREW M8X1,25-14
29	733199	1	RH TRANSMISSION
30	731935	1	BUSCH ROTOR
31	719921	2	DISMANTLED SCREW M6X1,00-28
32	718876	1	CAP
33	724146	2	STOP

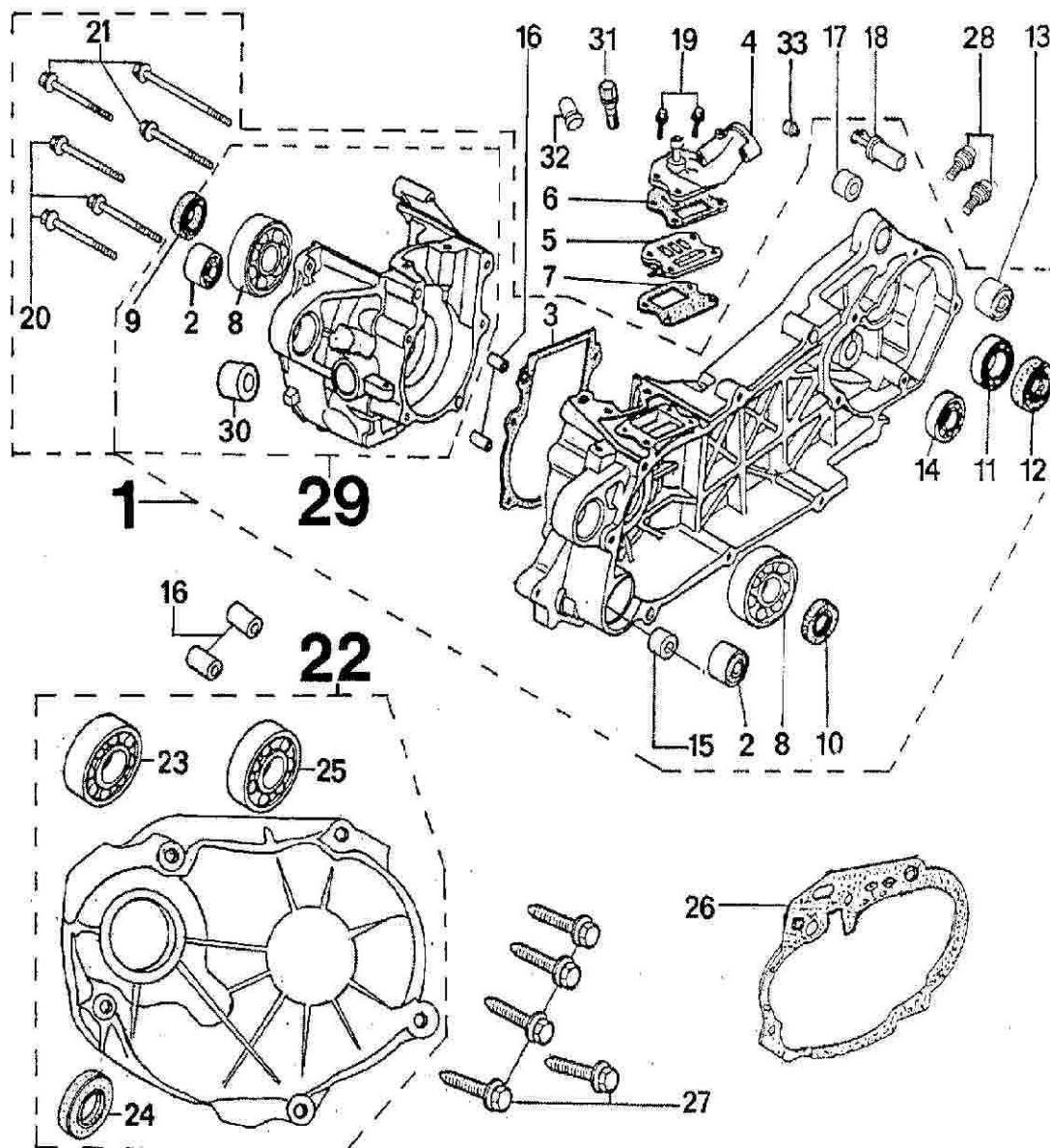


N° REF. C QTY DESCRIPTION

VACUUM TAP GASOLINE

G 05

1	753003	1	CRANKCASE
2	706421	2	SILENTBLOCK
3	737847	1	CRANKCASE GASKET
4	731567	1	INTAKE PIPE
5	731791	1	REED VALVE
6	737855	1	REED VALVE GASKET
7	737854	1	REED VALVE GASKET
8	722483	2	BALL BEARING 20-52-12
9	711824	1	OIL SEAL 15,6-25,6-7
10	720960	1	OIL SEAL 20-30-07
11	723307	1	BALL BEARING 20-42-12
12	723285	1	OIL SEAL 26-42-07
13	706574	1	SILENTBLOCK
14	706433	1	BALL BEARING 12-32-10
15	728849	1	SHOULDER 8-12-8
16	706437	4	DOWEL PIN 10-20
17	731979	1	RING 13,7-17-20
18	730685	1	BRAKE CAM (WITHOUT THREAD)
19	706561	4	FLANGE SCREW M6X1,00-28
20	706564	3	FLANDE SCREW M6X1,00-45
21	706567	3	FLANGE SCREW HM6X1,00-70
22	729792	1	TRANSMISSION COVER ASSY
23	722669	1	BALL BEARING 15-35-11
24	719068	1	OIL SEAL 17-30-06
25	725461	1	BALL BEARING 17-40-12
26	737840	1	CRANKCASE GASKET
27	730329	5	SELF TAPING SCREW HE M6-40
28	705096	2	FLANGE SCREW M8X1,25-14
29	736644	1	RH TRANSMISSION
30	731935	1	BUSCH ROTOR
31	719921	2	DISMANTLED SCREW M6X1,00-28
32	718876	1	CAP
33	724146	2	STOP

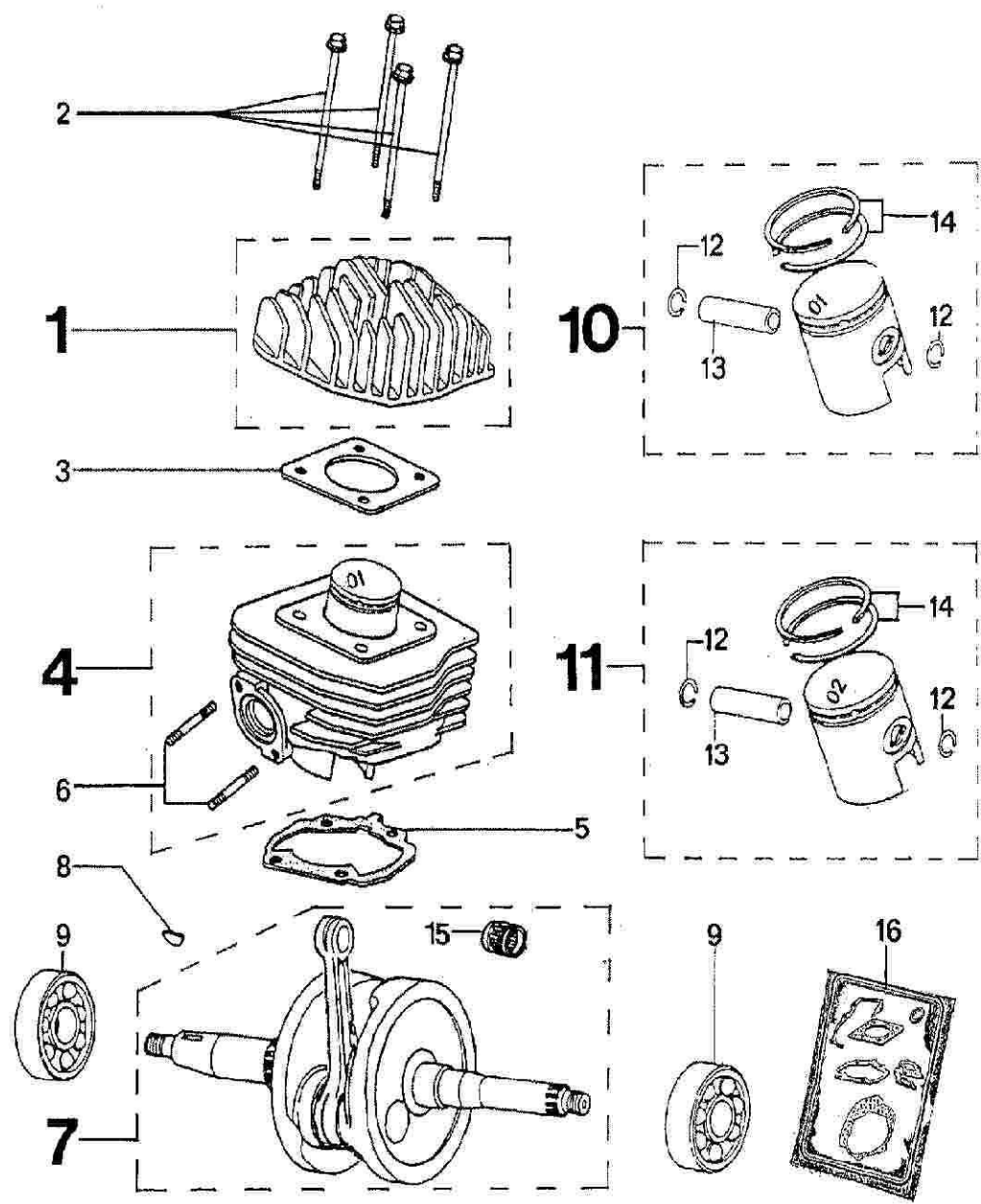


N° REF. C QTY DESCRIPTION

1	722890	1	CYLINDER HEAD ASSY
2	731428	4	SCREW WASHER
3	723392	1	CYLINDER HEAD GASKET
4	752520	1	CYLINDER/PISTON
5	737843	1	CYLINDER GASKET HEAD
6	723488	2	STUD M6X1,00-18/15
7	733487	1	CRANKSHAFT
8	711556	1	WOODRUFF KEY
9	722483	2	BALL BEARING 20-52-12
10	752230	1	PISTON ASSY (MARK 1;01;A1)
11	752231	1	PISTON ASSY (MARK 2;02;A2)
12	711998	2	SNAP RING
13	723397	1	PISTON PIN L=31
14	723396	2	PISTON RING SET
15	1	NEEDLE BEARING CAGE 12-15-15	
16	753148	1	GASKET SET

CRANKSHAFT-CYLINDER

E 09

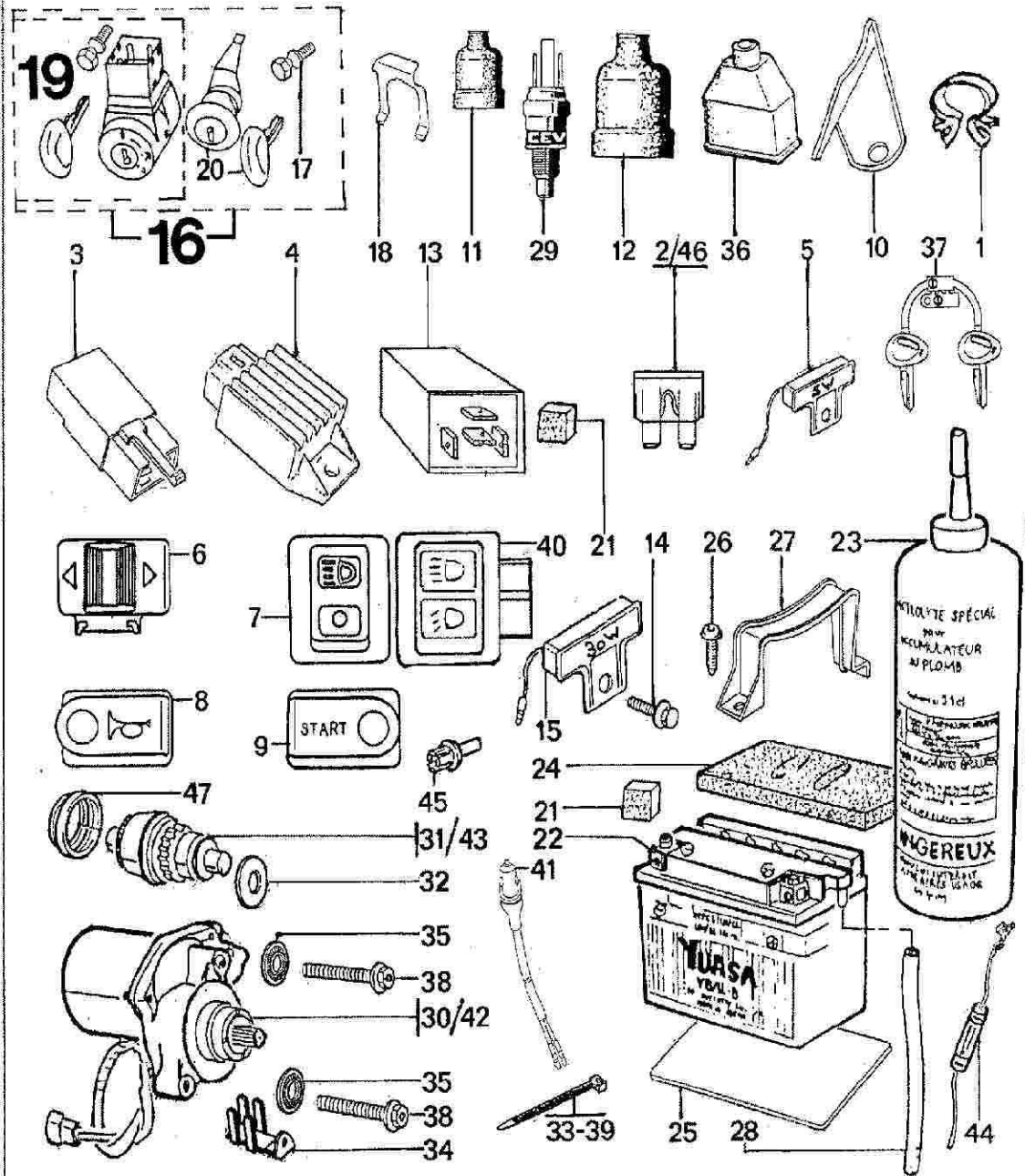


N° REF. C QTY DESCRIPTION

1	61950	3	CLIP
2	710672	1	FUSE (10 AMPERES)
3	712645	1	STARTER RELAY
4	735871	1	REGULATOR
5	724152	1	RESISTOR 5W-6,7 OHMS
6	729994	1	TURN LIGHT SWITCH
7	729995	1	LIGHT SWITCH
8	729996	1	HORN SWITCH
9	729997	1	STARTER SWITCH
10	730289	1	COIL HOLDER BRACKET
11	56310	2	CAP
12	713081	1	CAP
13	708607	1	BLINKER UNIT
14	704937	1	FLANGE SCREW M6X1,00-12
15	724153	1	RESISTOR 30W-5,90 OHMS
16	752727	1	STEERING LOCK+SELF BREAKING NUT
17	733118	2	BREAK SCREW
18	728451	1	LOCK SETTING SPRING
19	752728	1	STEERING LOCK+SELF BREAKING NUT
20	727610	1	SADDLE LOCK + KEY
21	59430	3	RUBBER STOP
22	700096	1	BATTERY 12V-4A
23	708786	1	ELECTROLYTE 41 CL
24	701367	1	BATTERY PROTECTOR
25	730642	1	BATTERY BLOCK
26	726207	1	ROUND-HEAD SCREW M5X0,80-14
27	729884	1	CLAMP
28	61764		TUBE (PER METER)
29	63357	2	STOP-LIGHT SWITCH
30	729181	1	STARTER MOTOR SM10129-0,25KW
31	729182	1	SPROCKET SM10246
32	730794	1	PLAIN WASHER 8,25-16-0,8
33	885008	3	TUBE CLIP
34	731742	1	HARNES CLAMP
35	858051	2	SPRING WASHER 6-12-1.2
36	728418	1	CAP
37	726549	1	BLANK KEY
38	706559	2	FLANGE SCREW M6X1,00-20
39	885009	2	TUBE CLIP 3,6 L=140

ELECTRIC EQUIPMENT

C 05

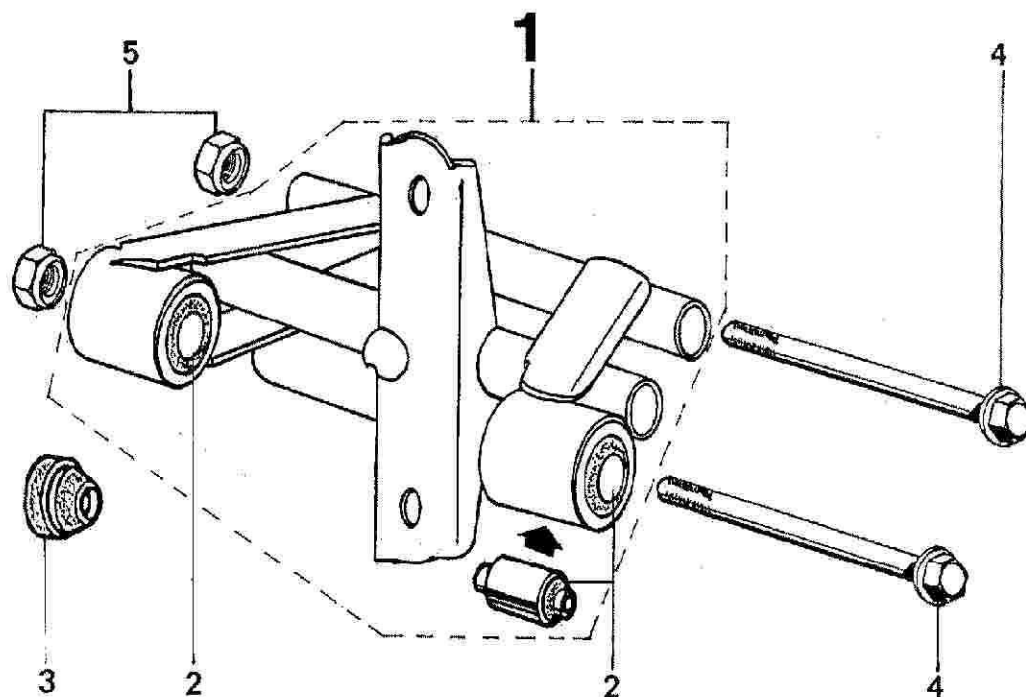


N° REF. C QTY DESCRIPTION

ENGINE ATTACHMENT

B 08

1	729970	1	ENGINE BRACKET
2	727061	2	SILENTBLOCK
3	727251	2	RUBBER STOP
4	724361	2	FLANGE SCREW M10X1,25-195
5	726426	2	FLANGE NUT M10X1,25



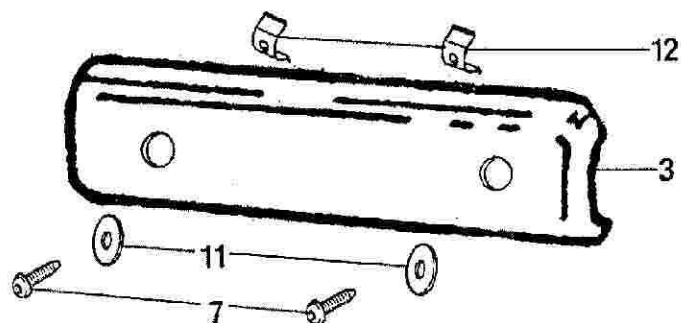
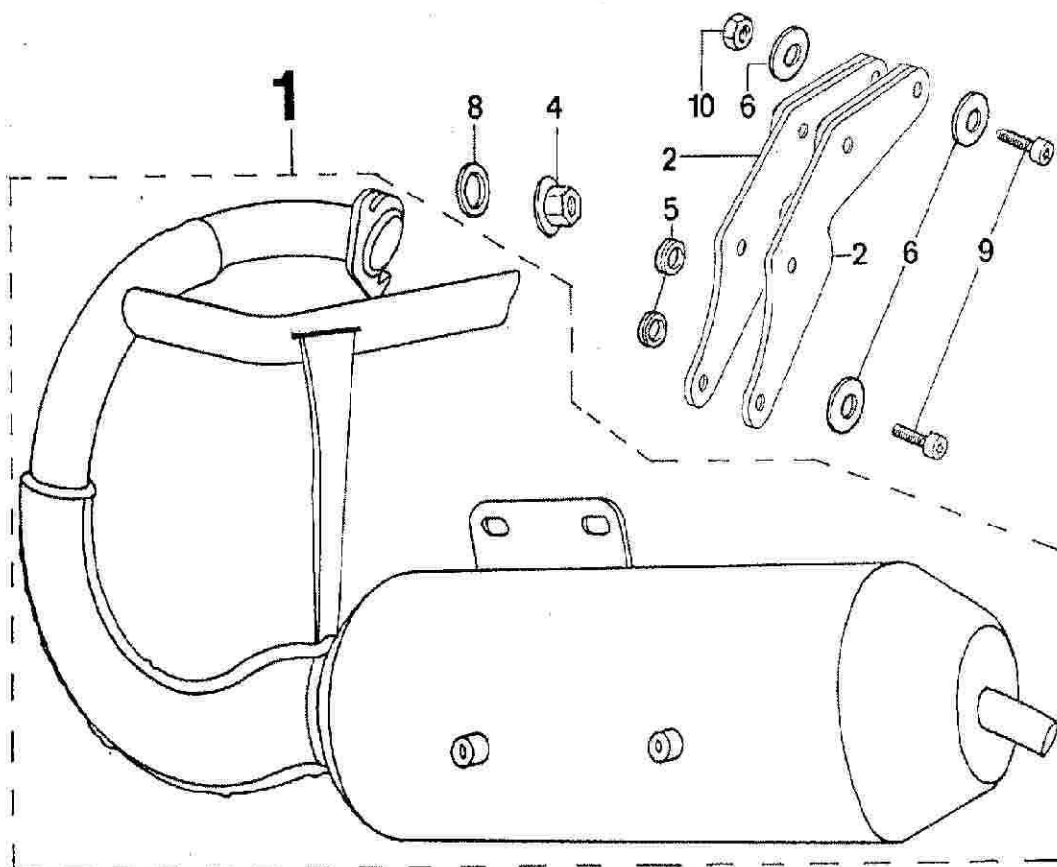
N° REF. C QTY DESCRIPTION

1	729928 *	1	MUFFLER
2	732433	2	BRACKET
3	730815	1	STRIP
4	712881	2	NUT WITH WASHER M6X1,00
5	853330	2	PLAIN WASHER 8,5-20-4,5
6	725083	6	CONICAL WASHER 8,4-16-1,4
7	726440	2	ROUND-HEAD SCREW M5X0,80-8
8	730850	1	PIPE GASKET
9	731109	4	HEAD CAP SCREW M8X1,25-30
10	710372	2	HEXAGON NUT M8X1,25
11	725082	2	CONICAL WASHER
12	731833	2	SPRING

FIXING ON CRANKCASE WITHTS FASTENING

F 09

* DO NOT FORGET TO SPECIFY COLOUR

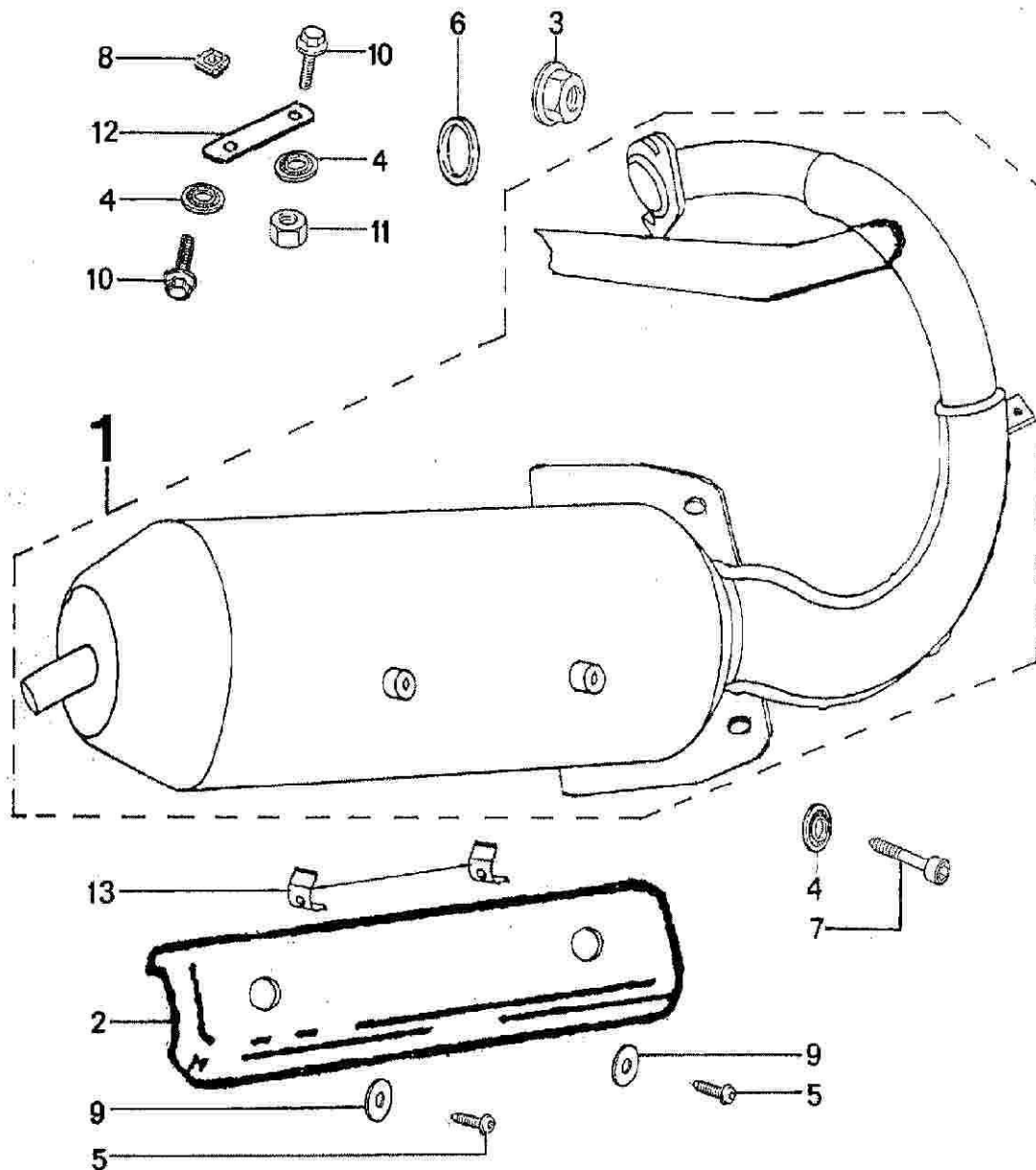


N° REF. C QTY DESCRIPTION

1	736108	1	MUFFLER
2	730815	1	STRIP
3	712881	2	NUT WITH WASHER M6X1,00
4	725083	4	CONICAL WASHER 8,4-16-1,4
5	726440	2	ROUND-HEAD SCREW M5X0,80-8
6	730850	1	PIPE GASKET
7	731109	2	HEAD CAP SCREW M8X1,25-30
8	734214	1	SQUARE NUT QM8X1,25
9	725082	2	CONICAL WASHER
10	710295	2	HEXAGON SCREW M5X0,80-20
11	710372	1	HEXAGON NUT M8X1,25
12	736706	1	PLATE
13	731833	2	SPRING

FIXING WITTS CRANKCASE

F 11



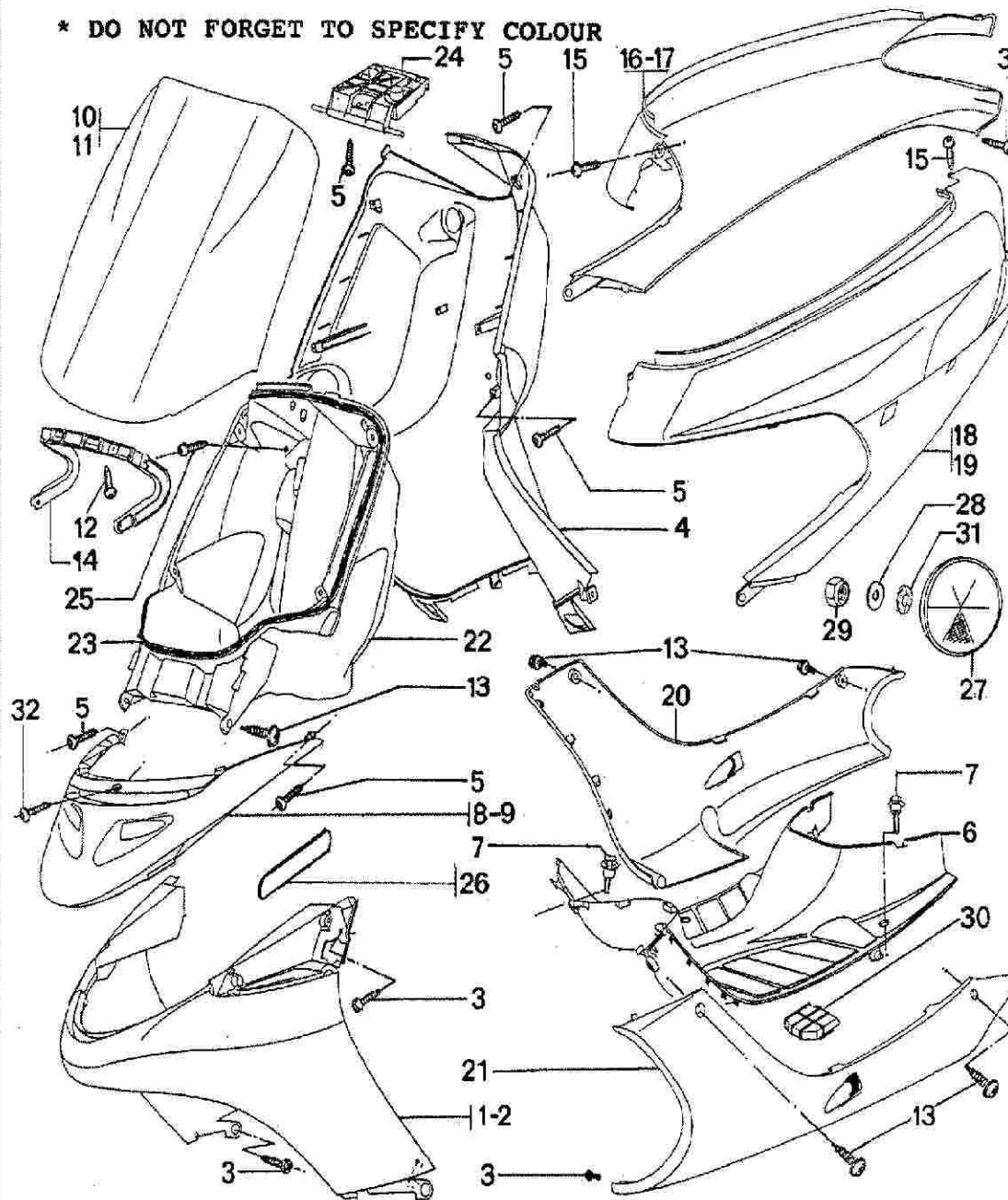
N° REF. C QTY DESCRIPTION

1	729217 *	1	FRONT COVER (PAINTED)
2	729329 *	1	FRONT COVER (MASS TINTED)
3	726457	6	FILLISTER-CURVED-WIDE HEAD 4-14
4	729199 *	1	INNER COVER
5	726456	13	ROUND-HEAD SCREW 4X0,70-14
6	729200 *	1	FLOOR PANEL
7	705004	6	SHOULDER SCREW M6X1,00-14
8	730638 *	1	FRONT COVER (PAINTED)
9	730897 *	1	FRONT COVER (MASS TINTED)
10	733767 *	1	TOOL COMPARTMENT COVER (PAINTED)
11	733766 *	1	INNER BOX (MASS TINTED)
12	726207	4	ROUND-HEAD SCREW M5X0,80-14
13	731503	6	FLANGE SCREW RLXS M5X0,80-10
14	729406 *	1	HINGE
15	729082	2	FLANGE SCREW RLXS M5X0,80-9
16	729206 *	1	RH LATERAL COVER (PAINTED)
17	729331 *	1	RH SIDE PANEL (MASS TINTED)
18	729208 *	1	LH LATERAL COVER (PAINTED)
19	729332 *	1	LH SIDE PANEL (MASS TINTED)
20	731048 *	1	RH FLOOR BOARD (PAINTED)
21	731049 *	1	LH FLOOR BOARD (PAINTED)
22	722295 *	1	INNER BOX WITH RUBBER
23	729205	1	LID SEAL
24	729136	1	ANTI THEFT LOCK
25	727944	2	FLANGE SCREW RLX M5X0,80-9
26	731195	2	*ORANGE* DECAL
27	729078	4	REFLECTOR
28	853101	4	PLAIN WASHER 5-10-1
29	834007	4	LOCKNUT M5X0.80
30	730809	1	BATTERY BLOCK
31	856058	4	INNER TOOTH LOCK-WASHER D=5
32	728541	1	SHEET METAL SCREW 4-30

ENGINE FAIRINGS

H 01

* DO NOT FORGET TO SPECIFY COLOUR

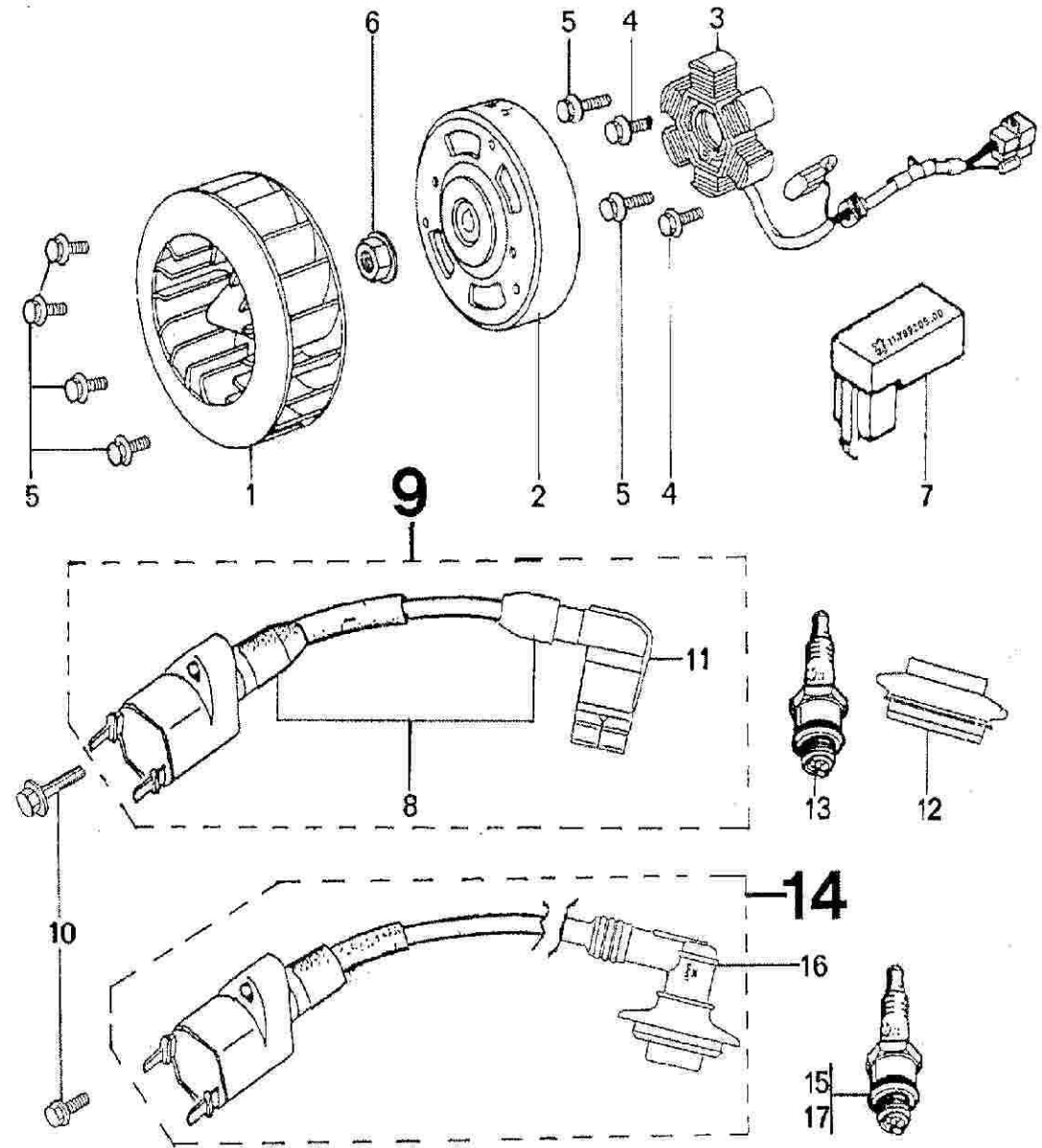


N° REF. C QTY DESCRIPTION

1	728802	1	VENTILLATING FAN
2	724163	1	ROTOR
3	729957	1	STATOR ASSY
4	706986	2	FLANGE SCREW M6X1,00-16
5	723279	6	FLANGE SCREW M6X1,00-18
6	728042	1	FLANGE NUT M 10X1,25
7	709205	1	CDI UNIT
8	731973	2	CAP
9	727101	1	OUTER COIL WITH WIRE
10	723695	1	FLANGE SCREW M5X0,80-20
11	713487	1	WATERPROOF SUPPRESSOR
12	724099	1	SUPPRESSOR SEAL
13	705529	1	SPARK PLUG *EYQUEM 850*
14	734361	1	OUTER COIL WITH WIRE
15	735589	1	SPARK PLUG EYQUEM R 850
16	734387	1	WATERPROOF SUPPRESSOR (NGK)
17	734370	1	SPARK PLUG NGK BR 7 HS

FLYWHEEL MAGNETO

B 06



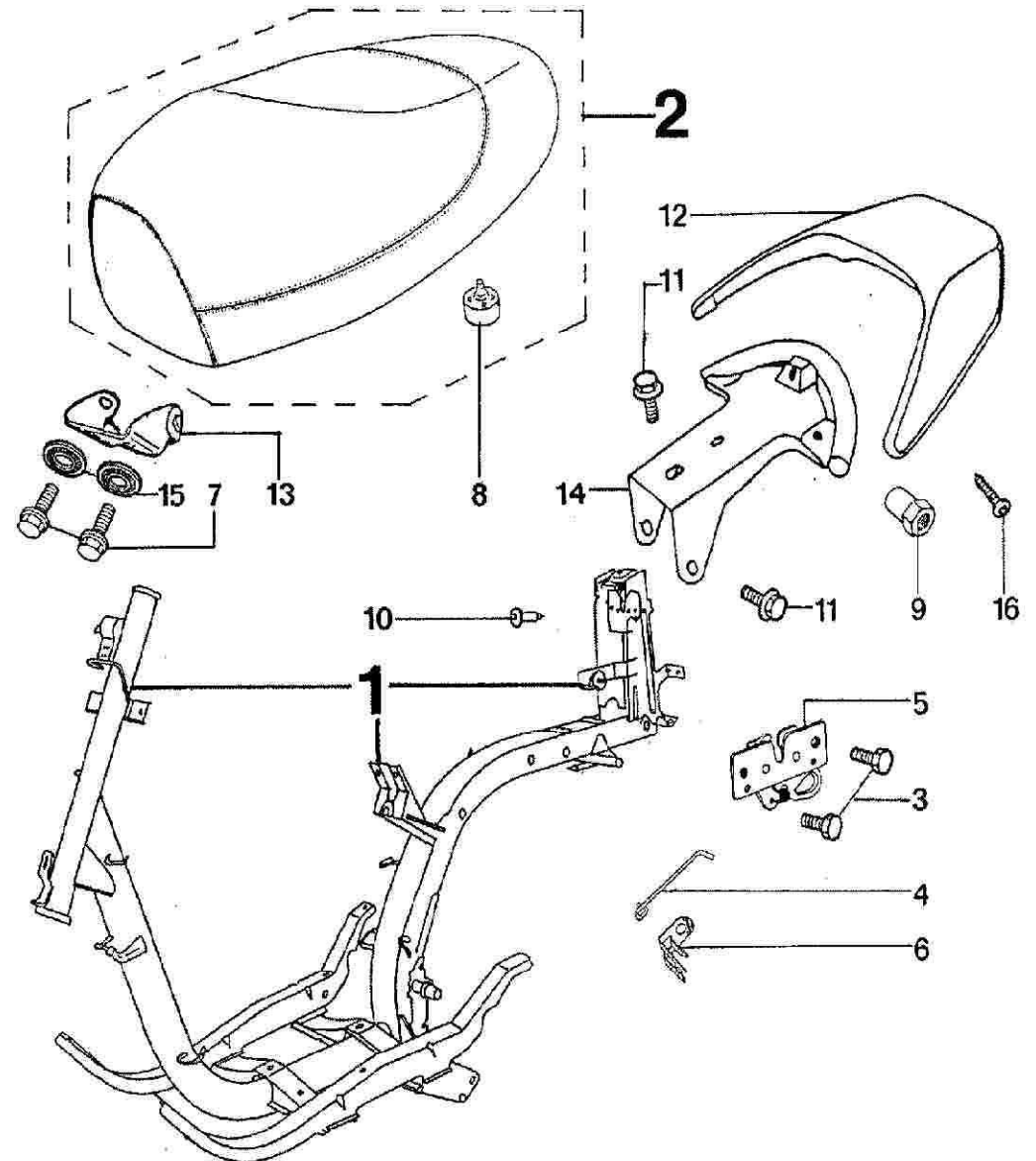
N° REF. C QTY DESCRIPTION

1	732038 *	1	FRAME
2	734471 *	1	SADDLE + AXLE
3	710416	2	HEXAGON SCREW HM6X1,00-10
4	729777	1	LOCKING SYSTEM
5	730134	1	LH HARNESS
6	730704	1	CLIP
7	704937	2	FLANGE SCREW M6X1,00-12
8	752664	5	RUBBER STOP
9	731915	2	NUT M5X0,80
10	872077	2	RIVET
11	705096	3	FLANGE SCREW M8X1,25-14
12	731456 *	1	CARRIER COVER
13	729848	1	HINGE
14	731726 *	1	CARRIER
15	716162	2	SPRING WASHER 6,1-14-1,3
16	726207	5	ROUND-HEAD SCREW M5X0,80-14

FRAME-SADDLE

H 02

* DO NOT FORGET TO SPECIFY COLOUR



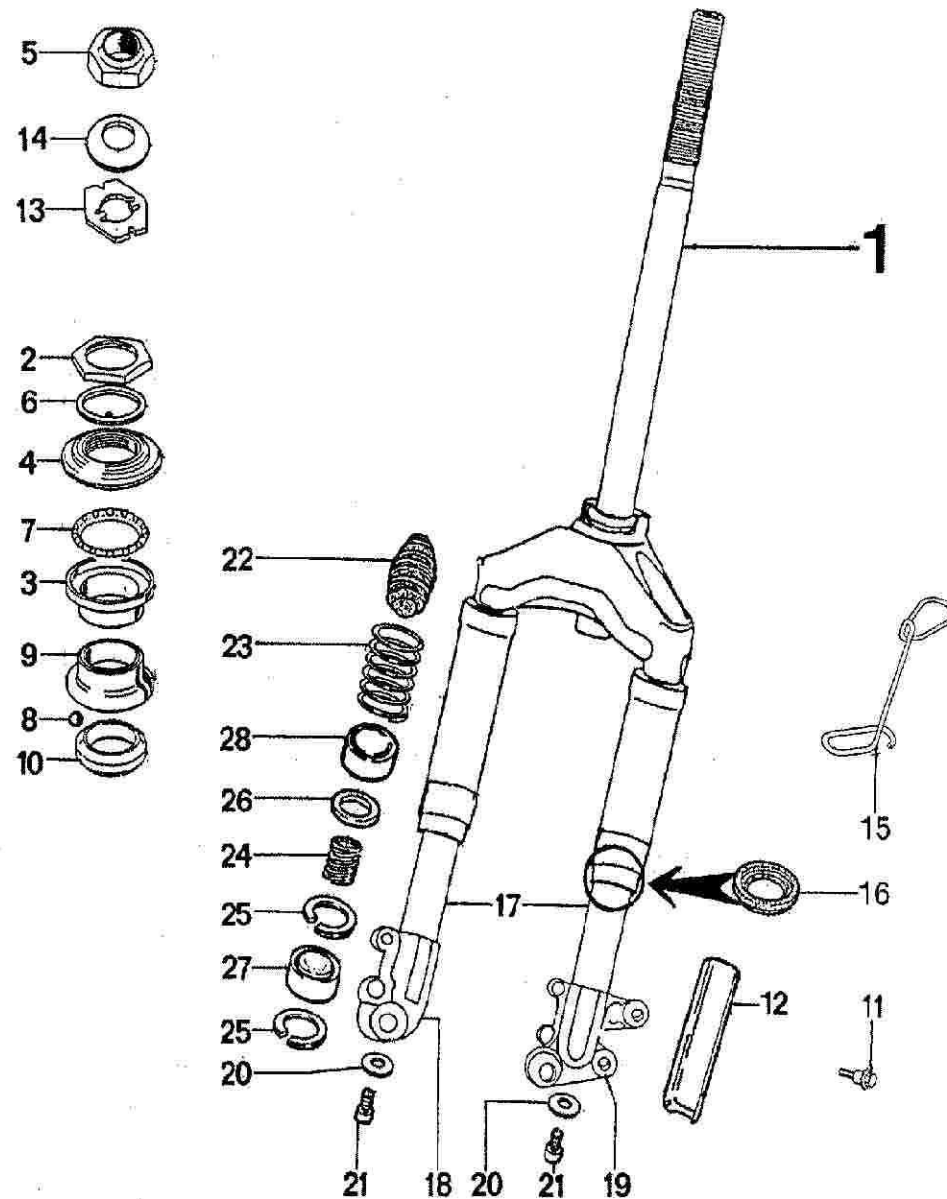
N° REF. C QTY DESCRIPTION

1	752771	1	TELESCOPIC FORK
2	51646	1	LOCK-NUT
3	91778	1	STEERING UPPER BALL RACE
4	731949	1	STEERING CONE RACE
5	733749	1	LOCKNUT
6	734109	1	WASHER
7	718587	1	BALL CAGE
8	700612	29	BALL D=3.969
9	729969	1	STEERING UNDER BALL RACE
10	729976	1	STEERING BOTTOM CONE RACE
11	705004	4	SHOULDER SCREW M6X1,00-14
12	732360 *	2	HEAT PROTECTION
13	733217	1	PLATE
14	733222	1	SPRINGWASHER
15	732822	1	HOLDER BRACKET
16	752770	2	OIL SEAL
17	752853	2	FORK LOWER TUBE
18	752854	1	RH BRACKET
19	752855	1	LH BRACKET
20	731770	2	CONICAL WASHER
21	706386	2	HEAD CAP SCREW M8X1,25-20
22	752856	2	RUBBER STOP
23	752857	2	SPRING L=132
24	752858	2	SPRING L=40
25	752859	4	INTERNAL CIRCLIP D=36
26	752860	2	PLAIN WASHER
27	752861	2	SPACER 27X35-36
28	752862	2	SPACER

TELESCOPIC FORK (REDUCT. GEAR ALLOY)

I 01

* DO NOT FORGET TO SPECIFY COLOUR



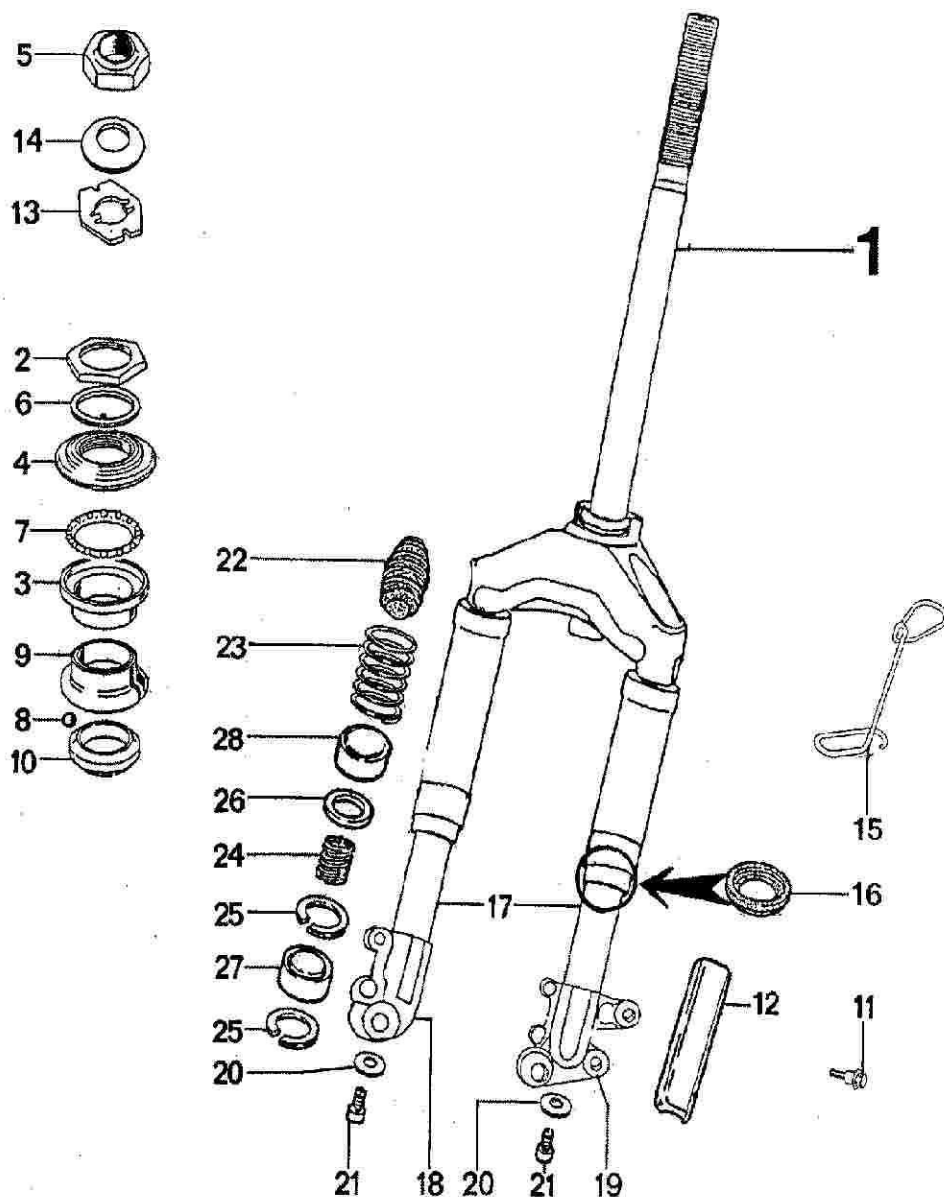
N° REF. C QTY DESCRIPTION

1	753156	1	TELESCOPIC FORK
2	51646	1	LOCK-NUT
3	91778	1	STEERING UPPER BALL RACE
4	731949	1	STEERING CONE RACE
5	733749	1	LOCKNUT
6	734109	1	WASHER
7	718587	1	BALL CAGE
8	700612	29	BALL D=3.969
9	729969	1	STEERING UNDER BALL RACE
10	729976	1	STEERING BOTTOM CONE RACE
11	705004	4	SHOULDER SCREW M6X1,00-14
12	732360 *	2	HEAT PROTECTION
13	733217	1	PLATE
14	733222	1	SPRINGWASHER
15	732822	1	HOLDER BRACKET
16	752770	2	OIL SEAL
17	752853	2	FORK LOWER TUBE
18	753170	1	RH BRACKET
19	752855	1	LH BRACKET
20	731770	2	CONICAL WASHER
21	706386	2	HEAD CAP SCREW M8X1,25-20
22	752856	2	RUBBER STOP
23	752857	2	SPRING L=132
24	752858	2	SPRING L=40
25	752859	4	INTERNAL CIRCLIP D=36
26	752860	2	PLAIN WASHER
27	752861	2	SPACER 27X35-36
28	752862	2	SPACER

TELESCOPIC FORK (REDUCT. GEAR PLASTIC)

I 03

* DO NOT FORGET TO SPECIFY COLOUR

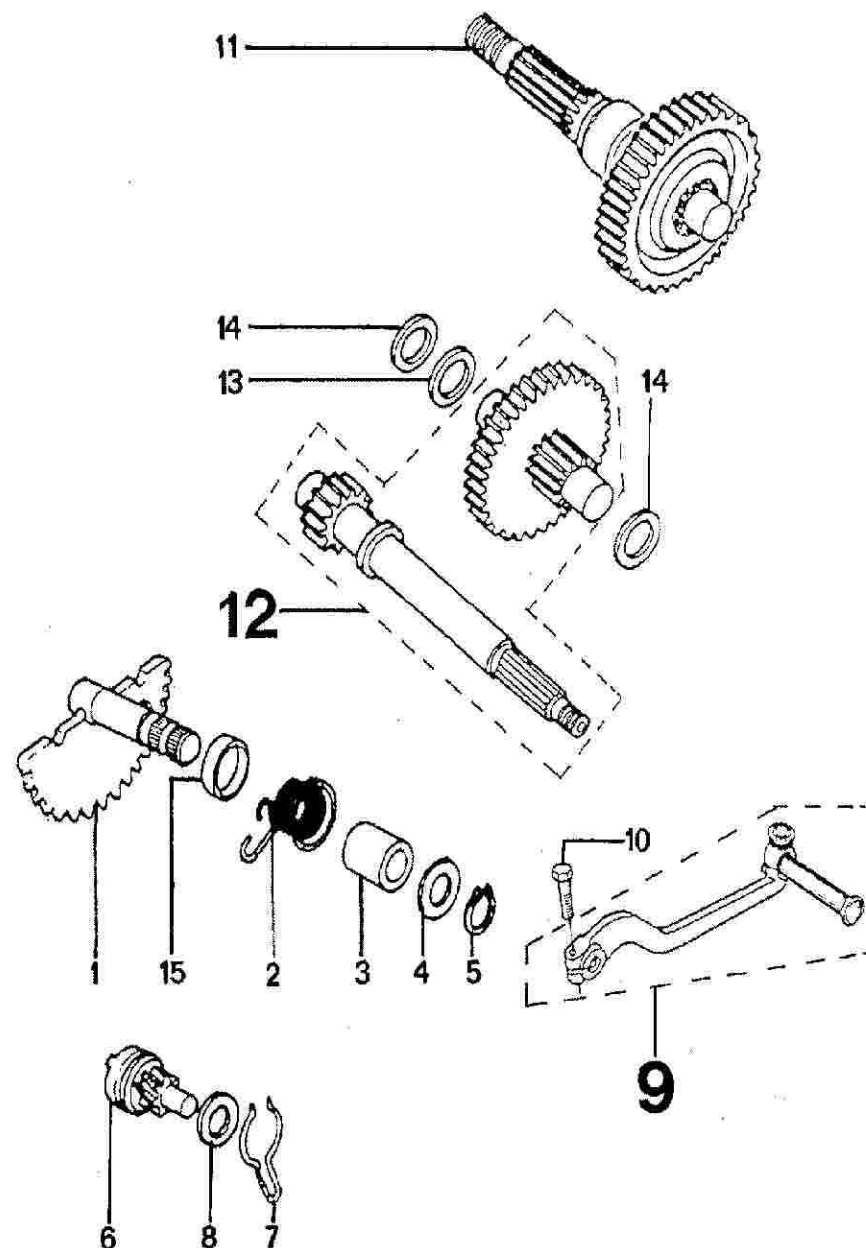


N° REF. C QTY DESCRIPTION

1	713347	1	KICK SPINDLE
2	713348	1	SPRING
3	713359	1	SPACER
4	713412	1	PLAIN WASHER 14,2-21-2
5	866214	1	EXTERNAL CIRCLIP 13-1
6	732802	1	DRIVEN GEAR
7	723421	1	FRICTION SPRING
8	724439	1	PLAIN WASHER 10,4-18-1
9	723494	1	KICK ARM
10	714937	1	HEXAGON SCREW M6X1,00-25
11	734449	1	FINAL SHAFT 45 D.
12	752711	1	PRIMARY SHAFT COUNTERSHAFT
13	713360	1	FIBER WASHER 14-22-1,5
14	723459	2	FIBER WASHER 14,3-26-0,5
15	721652	1	THRUST BUSH KICK 33-37-5

GEAR BOX-STARTER

E 02

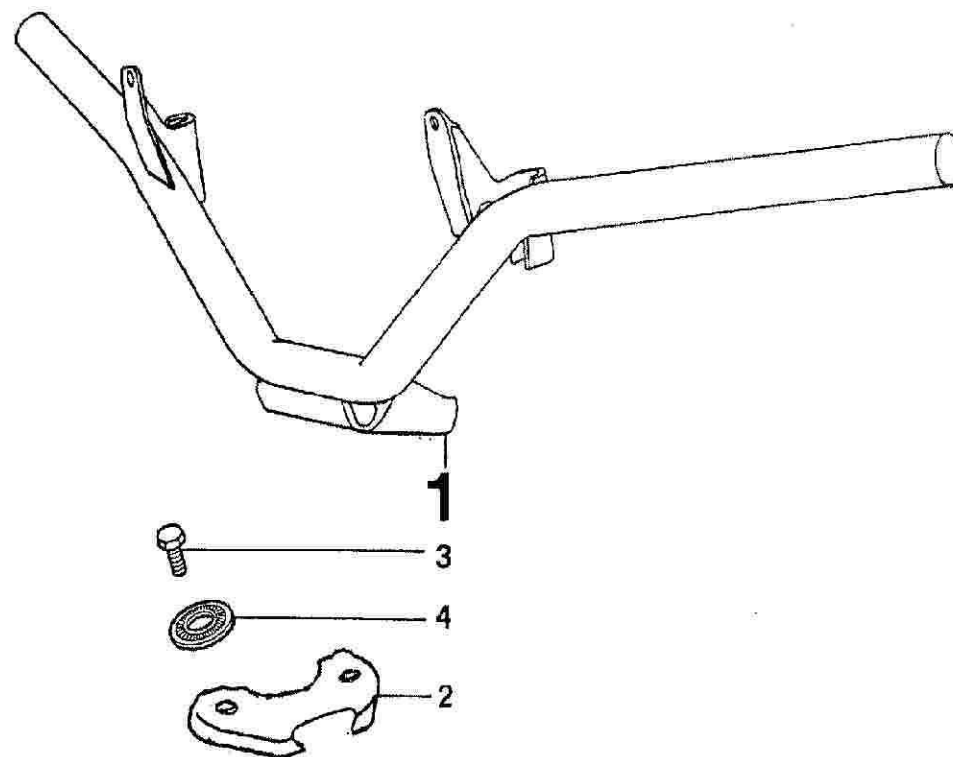


N° REF. C QTY DESCRIPTION

HANDLEBAR

D 03

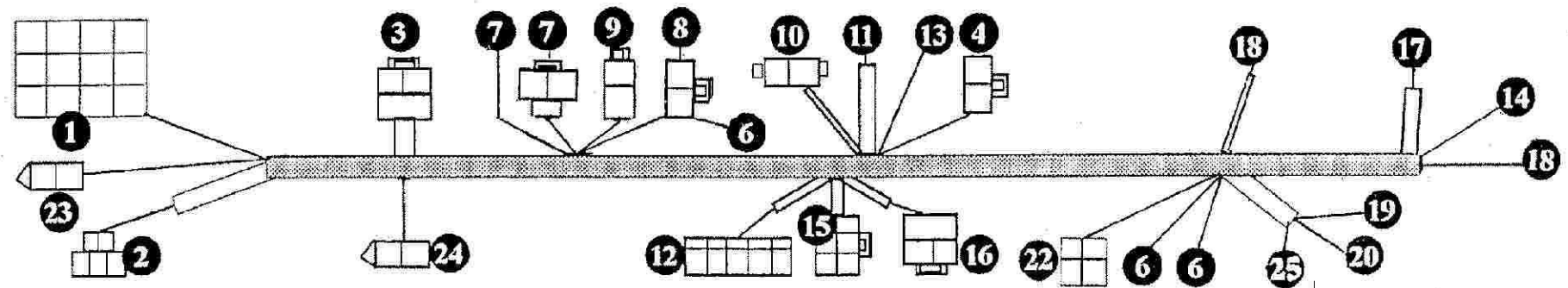
1	729935	1	HANDLEBAR
2	730938	1	LOCK PLATE
3	710416	2	HEXAGON SCREW HM6X1,00-10
4	858051	2	SPRING WASHER 6-12-1.2



N°	Connection	Connector	Female terminal	Blade terminal	Female connector	Terminal	Protector
1	Front Harness	724470				727402	
2	Steering lock	728413	728718				
3	Regulator	710631	700629				
4	Fuel unit	720459	710516				
5	Resistor						
6	Resistor				710524	897125	728548
7	Flywheel magneto	723729		723734	710523		
8	Choke	720459	710516				
9	Starter motor assy	700099	700328				
10	Fuse holder	728414	728419				
11	Outer Ignition coil		897026				728548
12	Turn signal relay	711955	897026				
13	Battery-					725364	728548
14	Battery+					897125	728548
15	O.D.I. unit	710514	710516				
16	Starter relay	700100	700628				
17	Oil sensor unit		897034				711888
18	Turn light		710516				
19	Stop light		897029				
20	Red light		66805				
21	Transformer						
22	LICENCE PLATE ILLUMI	733974	700628				
23	Front Harness	728389				727402	
24	FUEL TAP	728389				727402	
25	RED LIGHT		897034				

SPEEDAKE M

736624 MAIN HARNESS



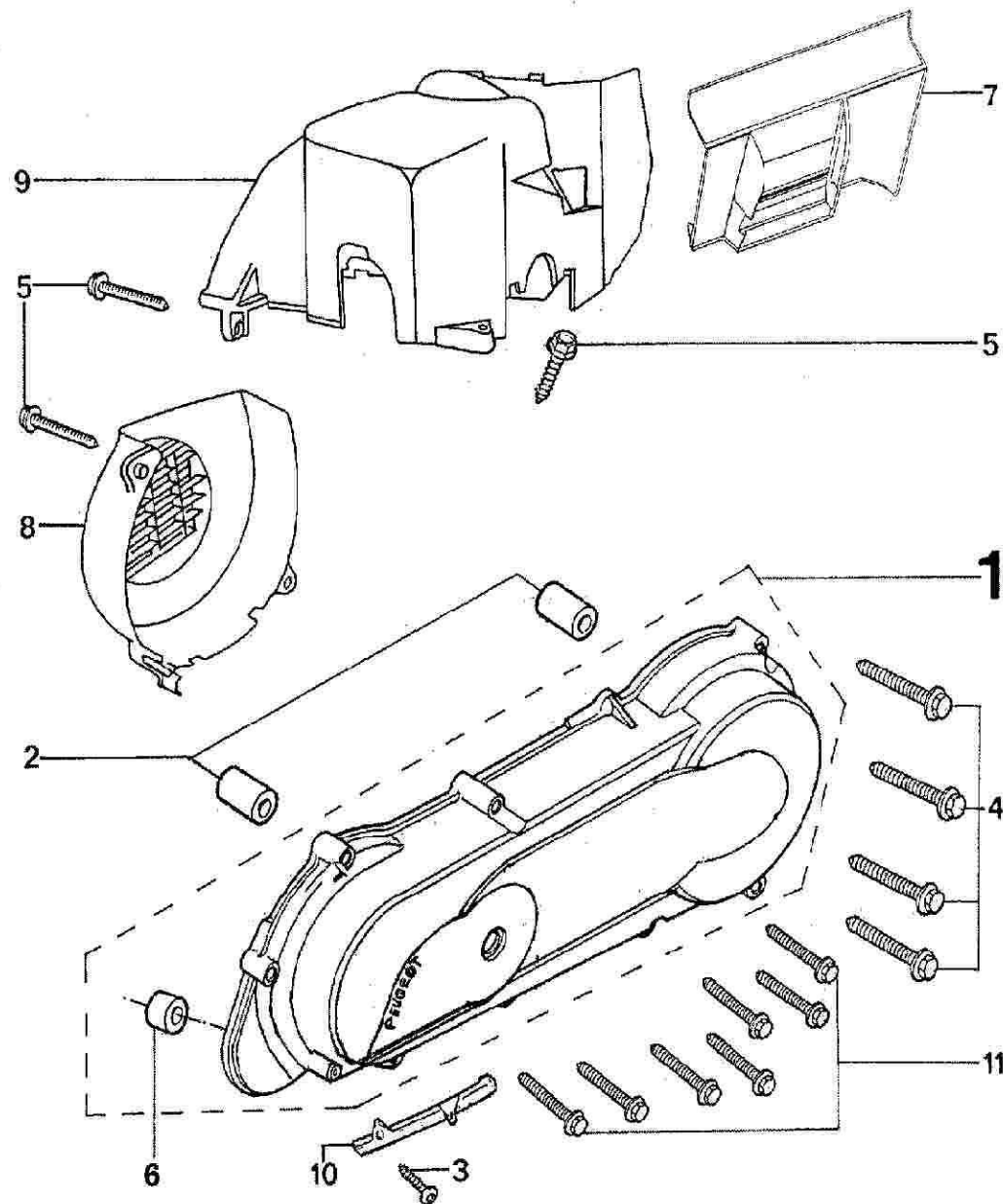
N° REF. C QTY DESCRIPTION

1	729799 *	1	TRANSMISSION COVER ASSY
2	706437	2	DOWEL PIN 10-20
3	727562	1	FILLISTER-CURVED-WIDE HEAD 6-12
4	730330	4	SELF TAPING SCREW HE M6-55
5	730556	4	FLANGE SCREW 6X1,00-25
6	728849	1	SHOULDER 8-12-8
7	734256	1	DEFLECTOR
8	734067	1	FAN COVER
9	734068	1	TIRE-CYLINDER
10	731161	1	CABLE GUIDE BRACKET
11	730329	7	SELF TAPING SCREW HE M6-40

CRANKCASE COVER

E 07

* DO NOT FORGET TO SPECIFY COLOUR



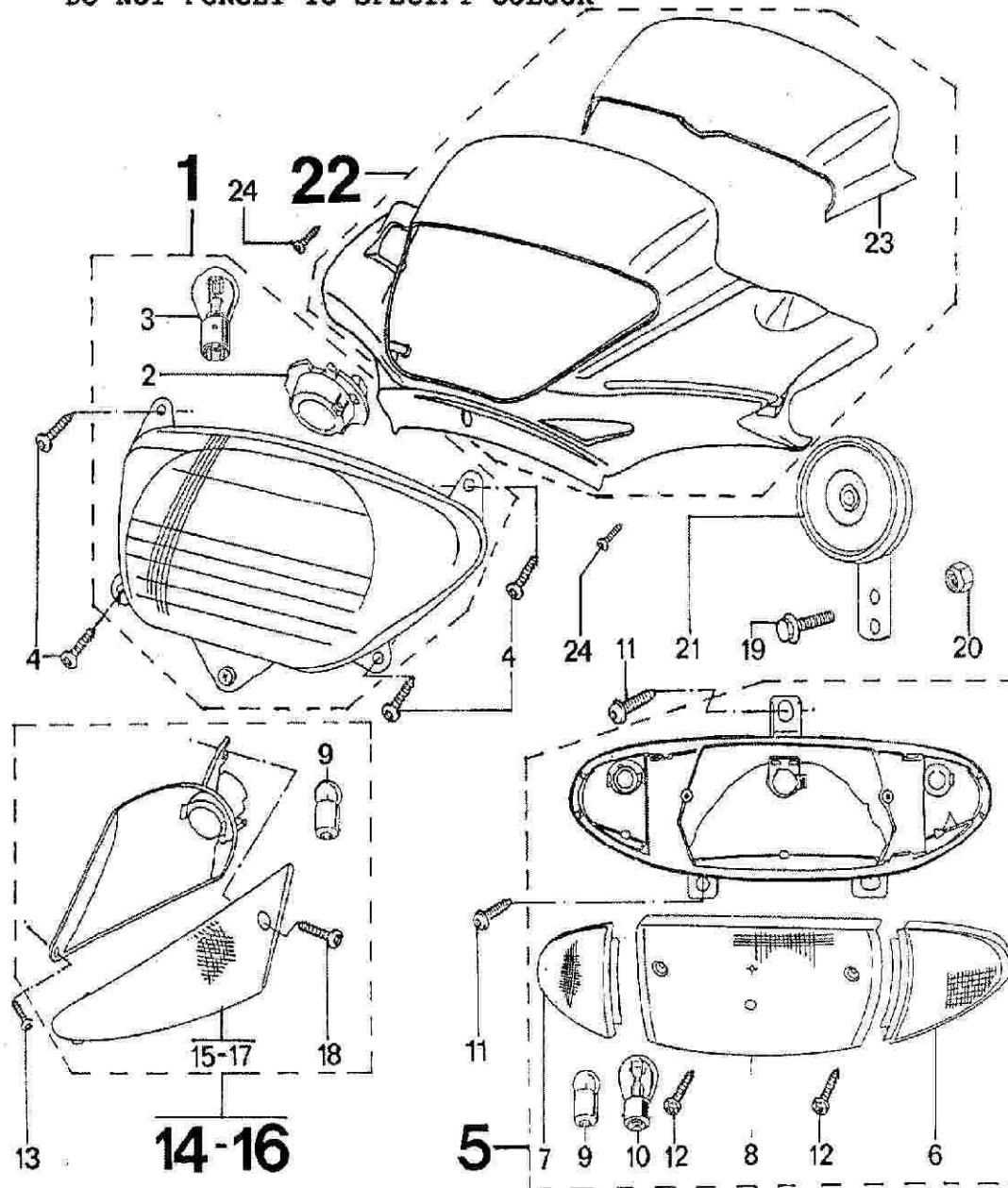
N° REF. C QTY DESCRIPTION

1	730218	1	RH FLOOR BOARD
2	752685	1	BULB HOLDER
3	706330	1	WHITE BULB 12V-25/25W
4	726457	4	FILLISTER-CURVED-WIDE HEAD 4-14
5	736723	1	TAILLIGHT ASSY
6	752661	1	RH REAR LENS
7	752662	1	LH REAR LENS
8	752663	1	TAILLIGHT LENS
9	700778	4	WHITE BULB 12V-10W BA 15S
10	711431	1	WHITE BULB 12V-5/21W BAY 15D
11	727944	3	FLANGE SCREW RLX M5X0,80-9
12	752670	2	LENS SCREW
13	726479	2	ROUND-HEAD SCREW SP4-10
14	728986	1	LH BLINKER
15	729991	1	LH LENS
16	728987	1	RH BLINKER
17	729993	1	RH LENS
18	68212	2	LENS SCREW L-32
19	705097	1	SHOULDER SCREW M6X1,00-17
20	710374	1	LOCKNUT M6X1.00
21	726735	1	HORN
22	731303 *	1	HEADLIGHT FAIRING
23	730635 *	1	EMBELLISHER
24	733862		SCREW RLX5 3-14

LIGHTING-INTERMITTENT-SIGNAL-HORN

C 10

* DO NOT FORGET TO SPECIFY COLOUR



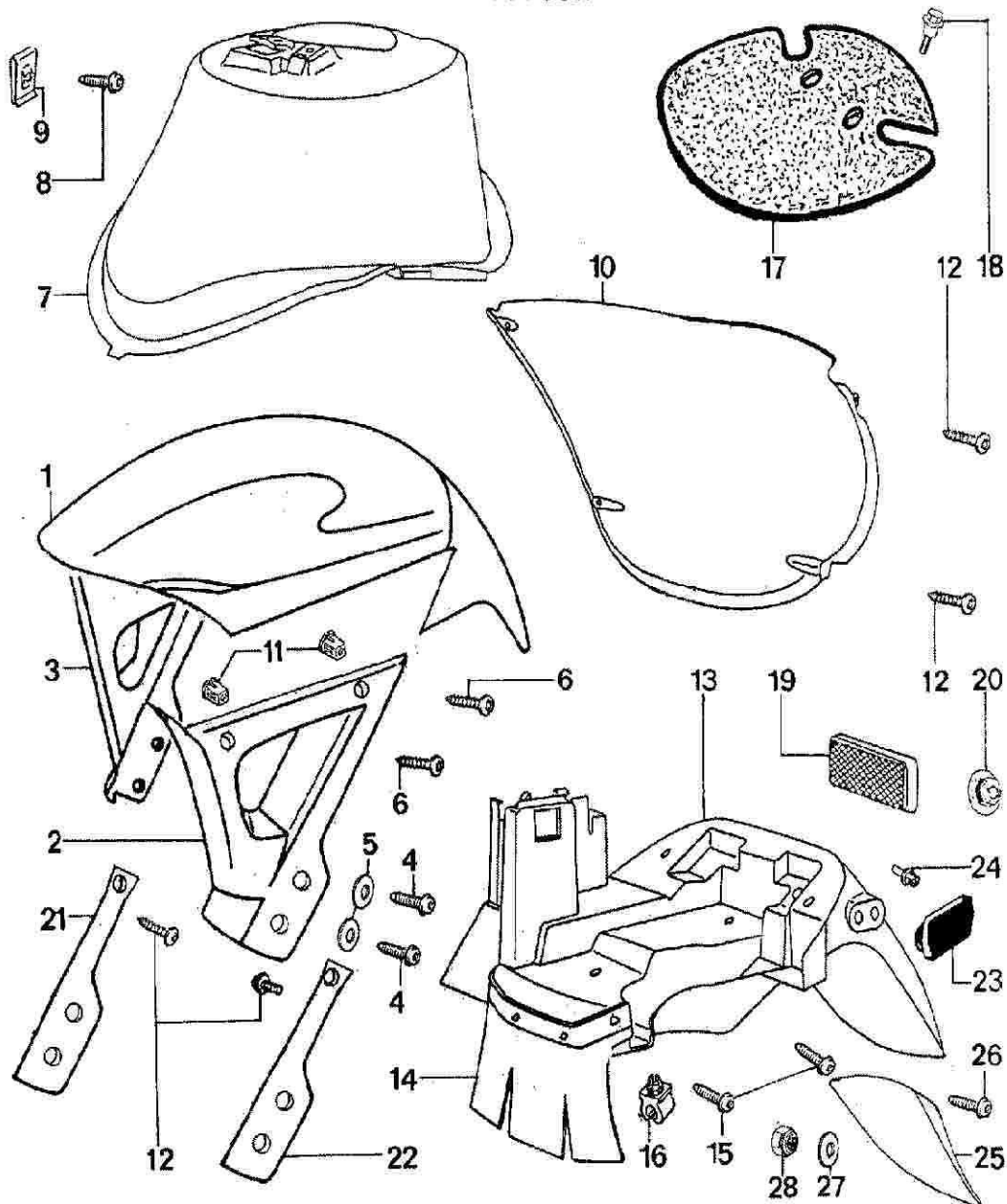
N° REF. C QTY DESCRIPTION

1	731458 *	1	FRONT FENDER
2	731459 *	1	LH HOLDER
3	731460 *	1	RH HOLDER
4	727984	4	FILLISTER-CURVED-WIDE M6X1,00-20
5	853086	4	PLAIN WASHER 6,2-12-1
6	732786	4	SCREW M4-18
7	730900 *	1	FRONT FENDER UPPER PART
8	726442	1	ROUND-HEAD SCREW M5X0,80-12
9	734241	1	CLIP NUT 5X0,80
10	731090 *	1	FRONT FENDER LOWER PART
11	731497	4	FIBBER NUT
12	726457	6	FILLISTER-CURVED-WIDE HEAD 4-14
13	731162 *	1	REAR FENDER
14	731518	1	MUDFLAP
15	727944	3	FLANGE SCREW RLX M5X0,80-9
16	731709	1	CLIP
17	731703	1	DUST PROTECTION
18	705004	2	SHOULDER SCREW M6X1,00-14
19	730012	1	REFLECTOR
20	65857	2	SPECIAL NUT M5
21	732679	1	RH BRACKET
22	732680	1	LH BRACKET
23	728078	2	CAP
24	731858	2	PLASTIC RIVET D=5,5
25	731163 *	1	MUDFLAP
26	728544	3	ROUND-HEAD SCREW 5X0,80-20
27	853101	3	PLAIN WASHER 5-10-1
28	834007	3	LOCKNUT M5X0.80

MUDGUARD

H 04

* DO NOT FORGET TO SPECIFY COLOUR

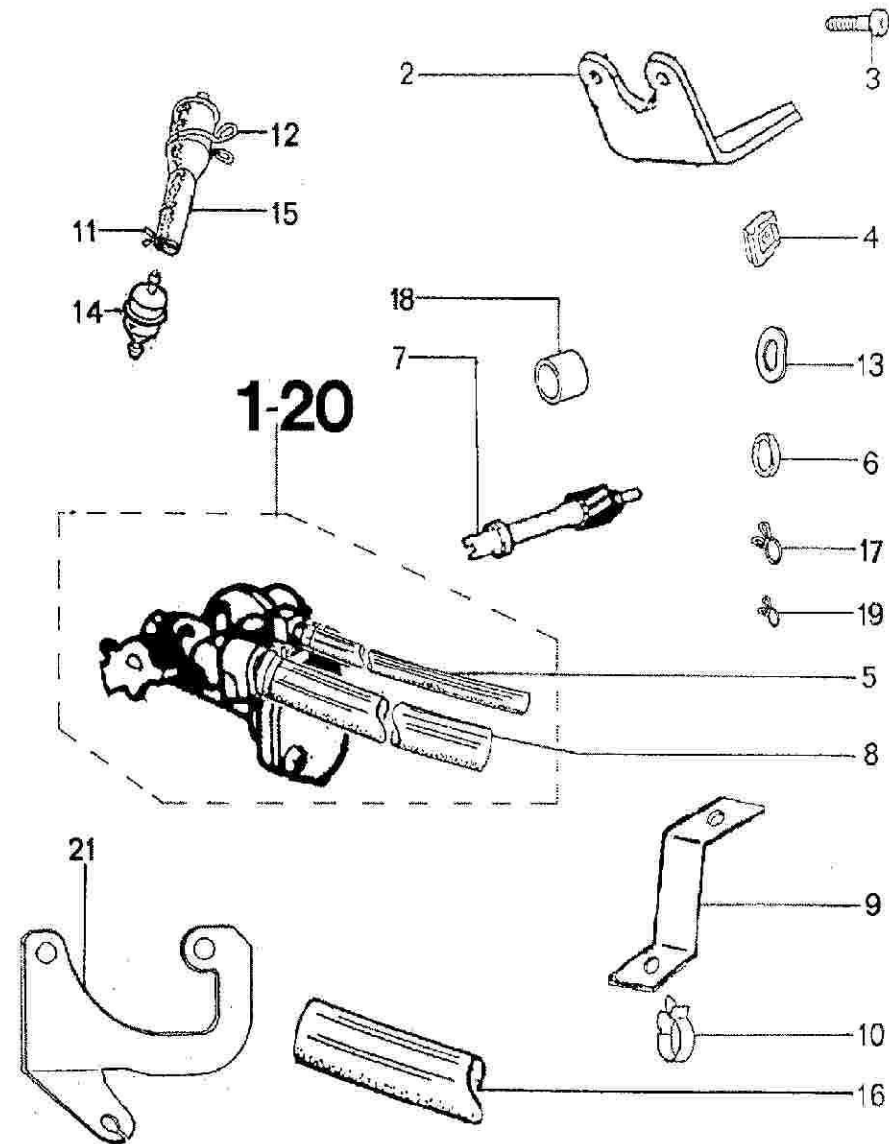


N° REF. C QTY DESCRIPTION

1	733218	1	OIL PUMP (MIKUNI)
2	733959	1	CABLE GUIDE BRACKET
3	717855	2	HEAD CAP SCREW M5X0,80-20
4	733860	2	SQUARE NUT M5X0,80 EP=4,5
5	752900	1	HOSE
6	750018	1	O'RING SEAL 18,3-2,3
7	731934	1	AXLE
8	752815	1	HOSE
9	735129	1	PLATE
10	714339	1	CLIP
11	724226	1	TUBE CLIP D=8
12	729989	1	TUBE CLIP
13	735296	1	FLEXIBLE WASHER 10,6X18,9X0,2
14	726138	1	TUBE FITTING
15	731521	1	FILTER TANK HOSE
16	727569	1	CABLE HOUSING 21X23-150
17	724225	1	TUBE CLIP D10
18	731935	1	BUSCH ROTOR
19	724789	1	COLLAR 6,5
20	731905	1	OIL PUMP (DELL'ORTO)
21	735786	1	CABLE GUIDE BRACKET

OIL PUMP

B 04



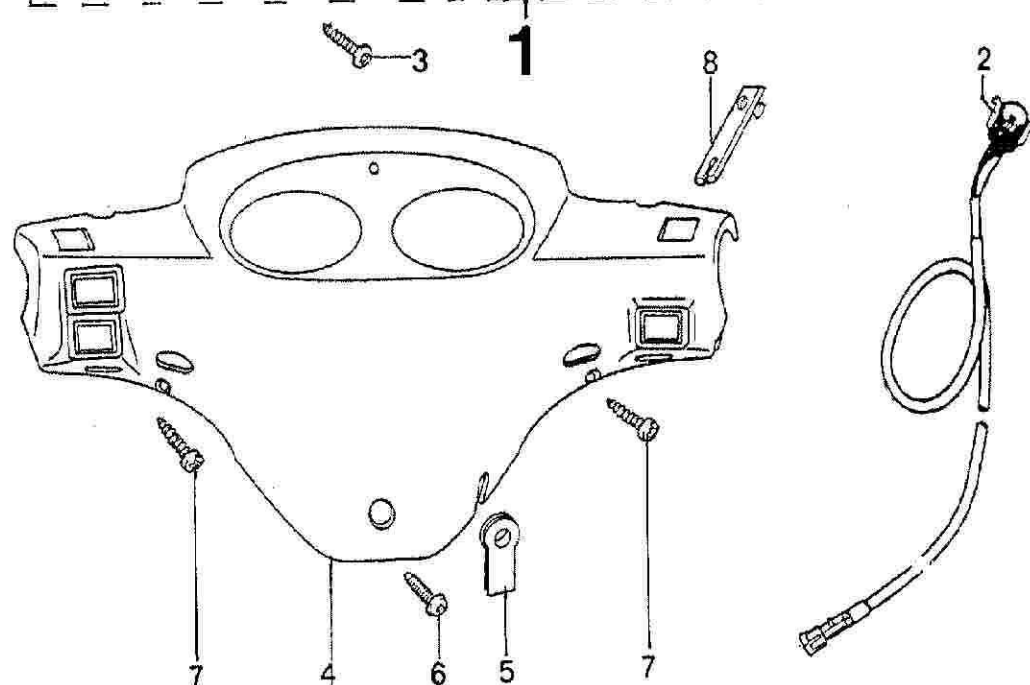
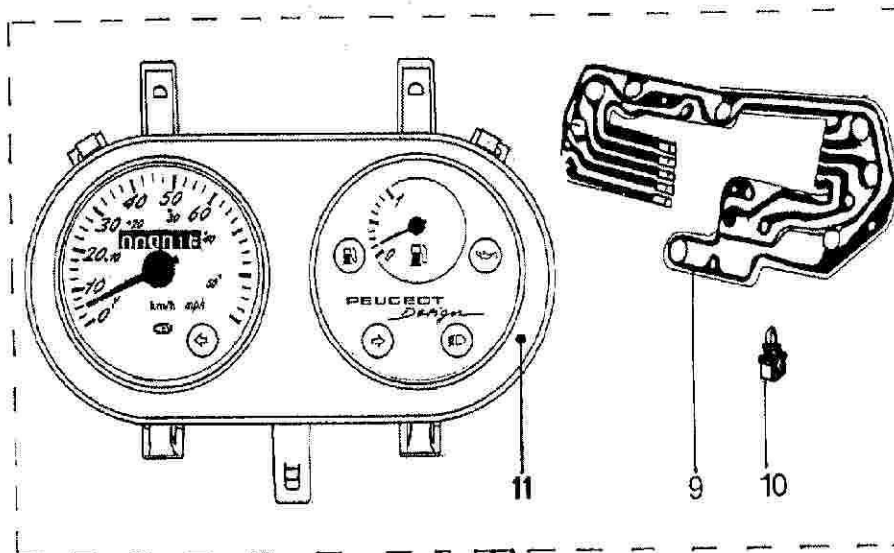
N° REF. C QTY DESCRIPTION

1	732799	1	SPEEDOMETER
2	736673	1	SPEEDOMETER CABLE
3	726456	3	ROUND-HEAD SCREW 4X0,70-14
4	729338 *	1	SPEEDOMETER COVER
5	730658	1	GROMMET
6	727944	1	FLANGE SCREW RLX M5X0,80-9
7	726457	5	FILLISTER-CURVED-WIDE HEAD 4-14
8	731859	1	PLATE
9	752754	1	PRINTED CIRCUIT
10	752110	9	BULB HOLDER
11	752963	1	LENS

SPEEDOMETER

H 03

* DO NOT FORGET TO SPECIFY COLOUR

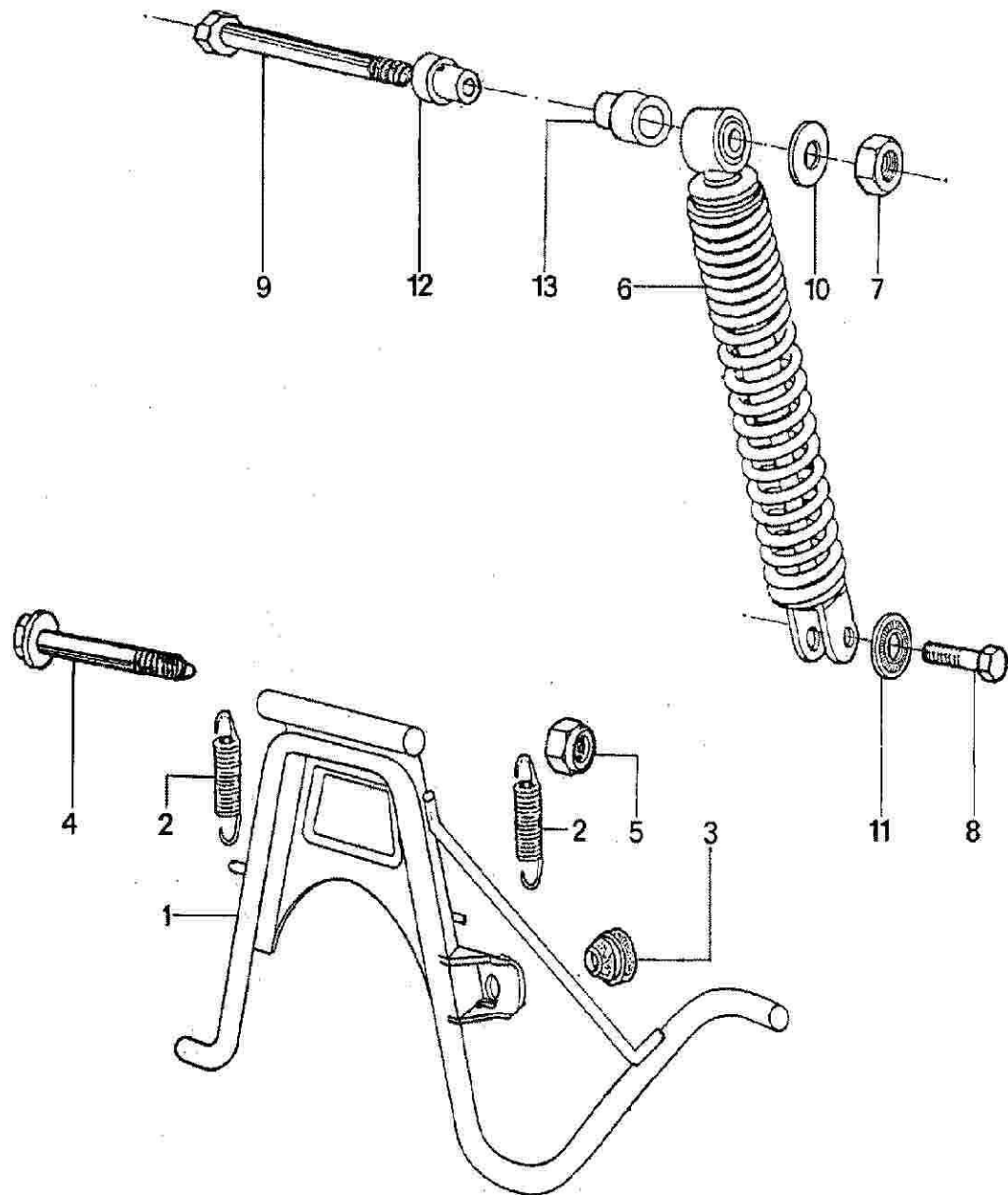


N° REF. C QTY DESCRIPTION

1	731740	1	CENTER STAND
2	732451	2	SPRING
3	731185	1	RUBBER STOP
4	712121	1	HEXAGON SCREW M8X1,25-145
5	750761	1	LOCKNUT M8X1,25
6	733255	1	SHOCK-ABSORBER
7	832095	1	HEXAGON NUT M10X1.00
8	710297	1	HEXAGON SCREW M8X1,25-35
9	734193	1	SCREW HM10X1,50-185
10	731250	1	PLAIN WASHER 10,25-25-2
11	858046	1	SPRING WASHER 8-16-1.4
12	732039	1	SPACER L=18
13	732040	1	SPACER L=36,5

SUSPENSION-STAND

F 01

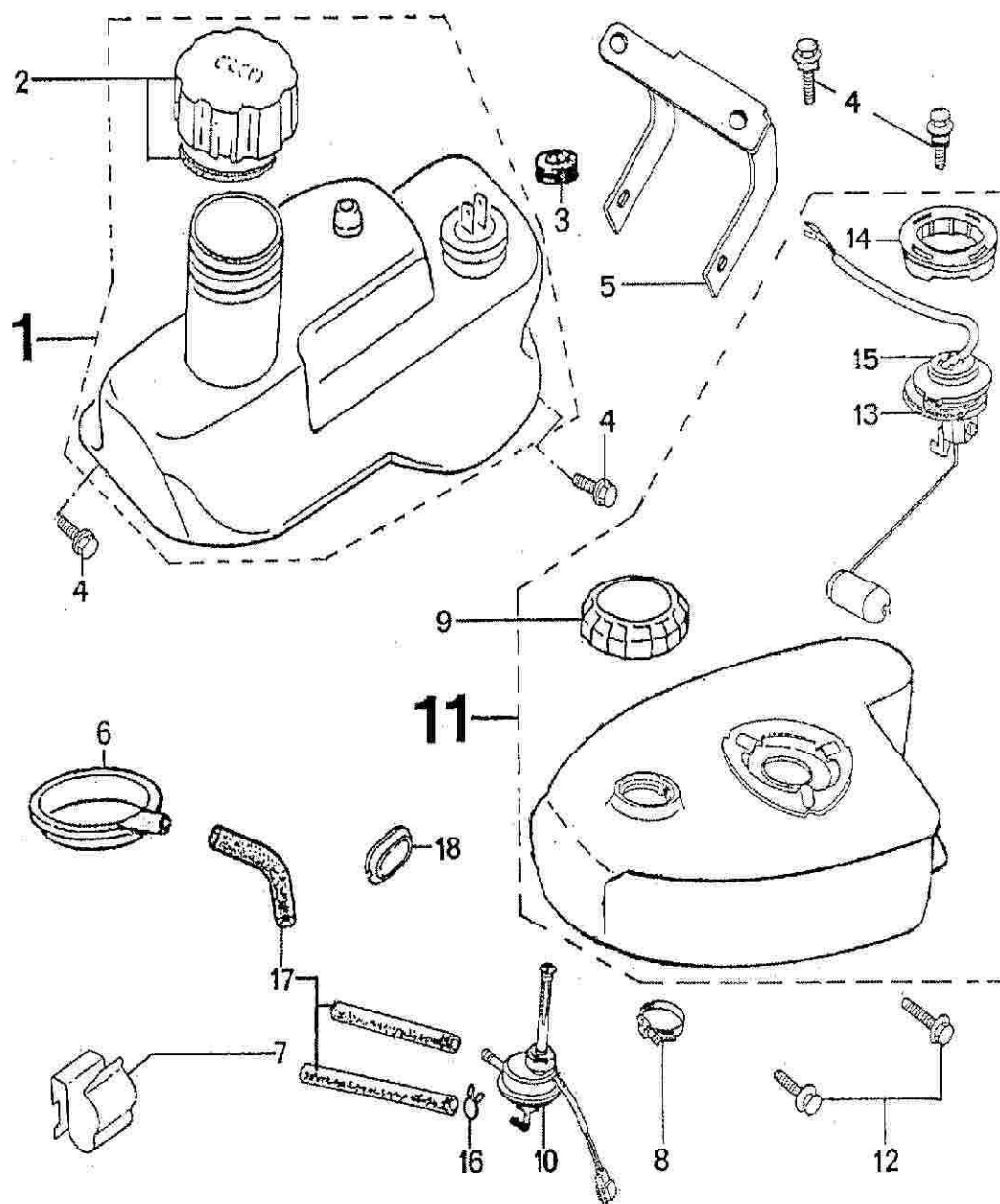


N° REF. C QTY DESCRIPTION

1	732821	1	FUEL TANK + JAUGE
2	721750	1	OIL TANK CAP + OIL RING
3	873108	1	GROMMET 11-8
4	705004	4	SHOULDER SCREW M6X1,00-14
5	735024	1	PLATE
6	735751	1	TANK
7	725728	1	CLIP
8	734221	1	TUBE CLIP
9	733252	1	CAP
10	735807	1	FUEL TAP
11	735779	1	FUEL TANK
12	705008	4	FLANGE SCREW M6X1,00-20
13	705134	1	FUEL GAUGE GASKET 34-44-5.5
14	733982	1	COLLAR
15	735769	1	FUEL GAUGE UNIT
16	724226	1	TUBE CLIP D=8
17	61764		TUBE (PER METER)
18	733995	1	CAP 19X27X33X3

VACUUM TAP GASOLINE

H 07



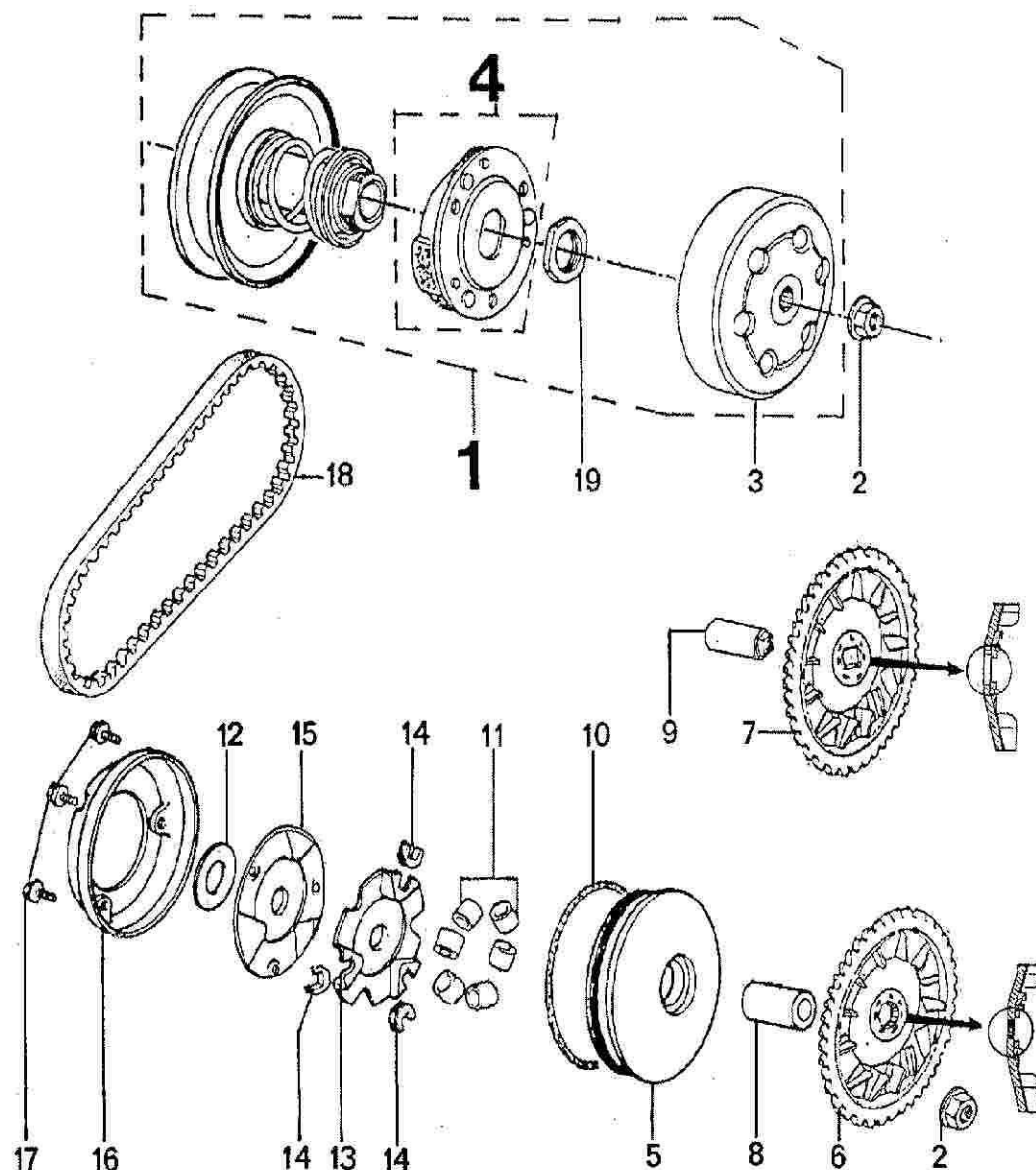
VEHICLE COLOR	R E F	PART-N°		TRANSFER SET									A 14
		TOUCH UP PAINT	COLOR SPRAY	ZEN M	ZEN LM	BUXY M	BUXY RM	SPEED M	ZEN N	ZEN LN	ZEN LS		
BLUE	BE	68700 BE	68900 BE		752920								
RED	RT	68700 RT	68900 RT				752845						
PEARLY BLACK	NK	68700 NK	68900 NK		752921	752709				753158			
PEARLY GREEN	VK	68700 VK	68900 VK			752709	752898						
RED / WHITE	BR	68700 BL 68700 RT	68900 BL 68900 RT					752735					
YELLOW	JF	68700 JF	68900 JF					752783					
MAGIC BLUE	MB	68700 MB	68900 MB		752920					753158			
GREY BLACK	NG	68700 N 68700 SG	68900 N 68900 SG					752912					
BLACK	N	68700 N	68900 N	752921						753158			
GREEN	SO	68700 SO	68900 SO	752921						753159			
RED	RS	68700 RS	68900 RS		752920	752709				753158			
NIGHT BLUE	NB	68700 NB	68900 NB					752971					
EXCALIBUR SATINE	ES	68700 ES	68900 ES							753159			
AQUAMARINE	AM	68700 AM	68900 AM							753159			
BLUE YELLOW	BJ	68700 BS 68700 JF	68900 BS 68900 BJ								753169		
BLACK RED	NR	68700 RT 68700 NS	68900 RT 68900 NS								753183		

N° REF. C QTY DESCRIPTION

1	732775	1	DRIVEN PULLEY ASSY
2	728042	2	FLANGE NUT M 10X1,25
3	732774	1	OUTER CLUTCH
4	752805	1	CLUTCH ASSY
5	732594	1	MOVABLE DRIVE FACE
6	732801	1	KICK DRIVEN GEAR (FLUTED FLASK)
7	738046	1	KICK DRIVEN GEAR (PLANED FLASK)
8	723587	1	DRIVE FACE BOSS L=38MM
9	735509	1	DRIVE FACE BOSS (PLANED FLASK) L=38,1
10	732743	1	O'RING SEAL 81X1,5
11	732693	6	WEIGHT ROLLER D=7,5
12	718570	1	PLAIN WASHER 12,3-19,8-1
13	730358	1	RAMP
14	723584	3	RAMP GUIDE
15	732522	1	STOPPER *8*
16	732742	1	SHROUD
17	721009	3	HEXAGON SCREW M4X0,7-12
18	729171	1	V.BELT 18X8
19	706516	1	SPECIAL NUT 28

OUTER CLUTCH Ø114 (6 HOLE)

F 14



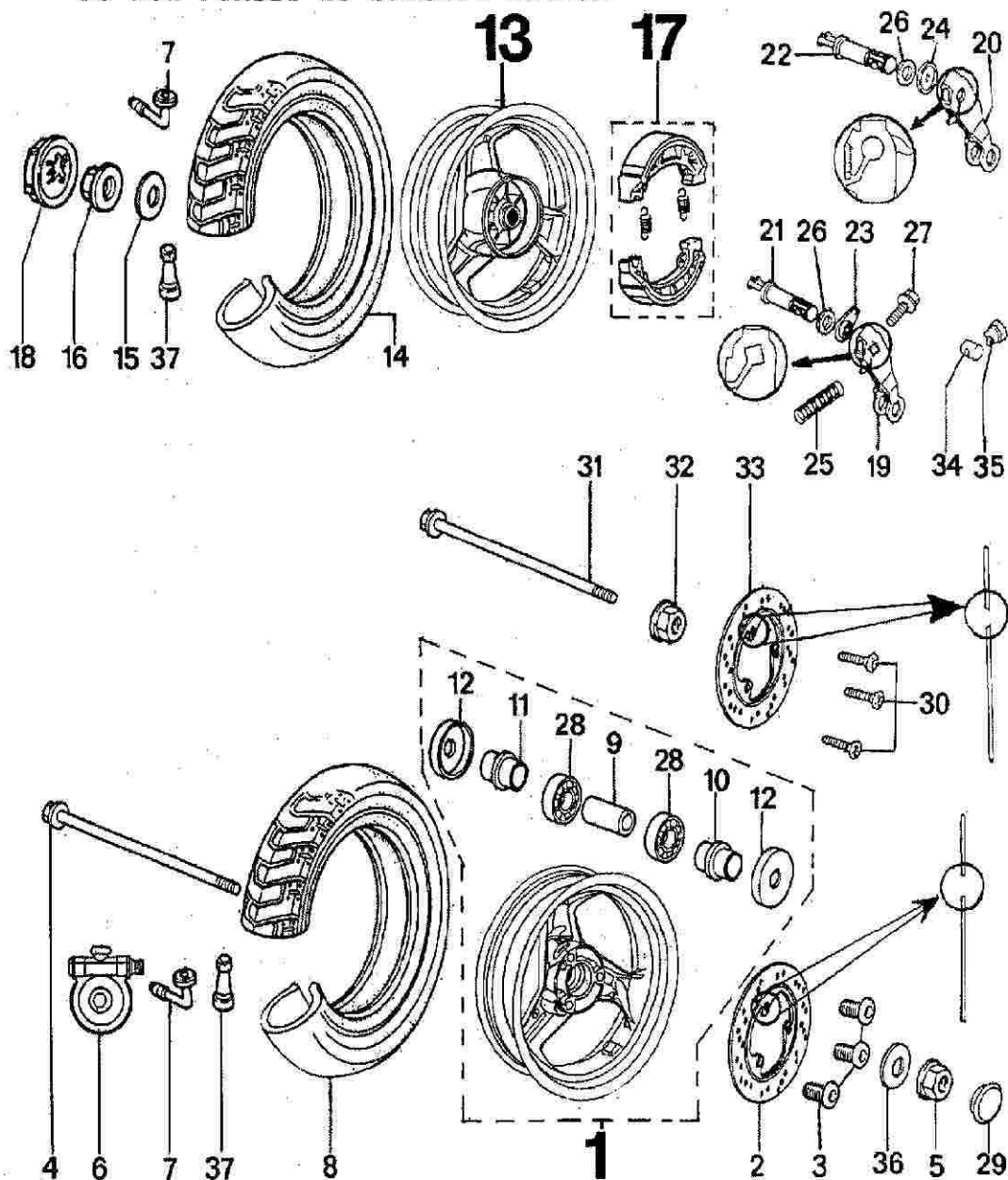
N° REF. C QTY DESCRIPTION

1	730935 *	1	FRONT WHEEL
2	731767	1	BRAKE DISC D=190 (733771+733564)
3	731769	3	SCREW BHC M8X1,25-30
4	730881	1	HUB AXLE L=250MM (733577+834023)
5	733233	1	FLANGE NUT 12X1,75
6	730614	1	REDUCTION GEAR *FACOMSA*2
7	724638	2	TUBE VALVE 90°
8	731017	1	TIRE 120/70-12 (NOT AVAILABLE)
9	752736	1	SPACER L=92,5
10	752737	1	SPACER
11	752738	1	SPACER
12	752739	2	OIL SEAL
13	730937 *	1	REAR WHEEL
14	731027	1	TIRE 130/70-12 (NOT AVAILABLE)
15	732445	1	SPRING WASHER M 14
16	728073	1	FLANGE NUT 14X1,50
17	725436	1	BRAKE SHOE SET
18	731059	1	CAP
19	725437	1	BRAKE ARM (GEOM SQUARE)
20	734187	1	BRAKE ARM (FLUTED FLASK)
21	725439	1	REAR BRAKE CAM (GEOM SQUARE)
22	733765	1	REAR BRAKE CAM (FLUTED FLASK)
23	725438	1	INDICATOR (GEOM SQUARE)
24	734182	1	CUP (FLUTED FLASK)
25	724145	1	BRAKE LEVER SPRING
26	724142	1	FELT GASKET
27	726979	1	FLANGE SCREW HM6X1,00-30
28	722669	2	BALL BEARING 15-35-11
29	733241	1	CAP
30	733564	3	FLAT HEAD SCREW FXC M8X1,250-30
31	733577	1	HUB AXLE L:253MM 12X1,25
32	834023	1	LOCKNUT FI12X1,25
33	733771	1	BRAKE DISC D=190
34	726209	1	BRAKE BARREL D12
35	720901	1	BRAKE NUT M6X1,00
36	59982	1	PLAIN WASHER 12-22-2
37	718647	2	VALVE

REAR WHEEL(REDUCTION GEAR ALLOY)

H 09

* DO NOT FORGET TO SPECIFY COLOUR



N° REF. C QTY DESCRIPTION

1	737755 *	1	FRONT WHEEL
2	731767	1	BRAKE DISC D=190 (733771+733564)
3	731769	3	SCREW BHC M8X1,25-30
4	730881	1	HUB AXLE L=250MM (733577+834023)
5	733233	1	FLANGE NUT 12X1,75
6	737762	1	REDUCTION GEAR
7	724638	2	TUBE VALVE 90°
8	731017	1	TIRE 120/70-12 (NOT AVAILABLE)
9	752736	1	SPACER L=92,5
10	752737	1	SPACER
11	752738	1	SPACER
12	752739	2	OIL SEAL
13	730937 *	1	REAR WHEEL
14	731027	1	TIRE 130/70-12 (NOT AVAILABLE)
15	732445	1	SPRING WASHER M 14
16	728073	1	FLANGE NUT 14X1,50
17	725436	1	BRAKE SHOE SET
18	731059	1	CAP
19	725437	1	BRAKE ARM (GEOM SQUARE)
20	734187	1	BRAKE ARM (FLUTED FLASK)
21	725439	1	REAR BRAKE CAM (GEOM SQUARE)
22	733765	1	REAR BRAKE CAM (FLUTED FLASK)
23	725438	1	INDICATOR (GEOM SQUARE)
24	734182	1	CUP (FLUTED FLASK)
25	724145	1	BRAKE LEVER SPRING
26	724142	1	FELT GASKET
27	726979	1	FLANGE SCREW HM6X1,00-30
28	722669	2	BALL BEARING 15-35-11
29	733241	1	CAP
30	733564	3	FLAT HEAD SCREW FXC M8X1,250-30
31	733577	1	HUB AXLE L:253MM 12X1,25
32	834023	1	LOCKNUT FI12X1,25
33	733771	1	BRAKE DISC D=190
34	726209	1	BRAKE BARREL D12
35	720901	1	BRAKE NUT M6X1,00
36	59982	1	PLAIN WASHER 12-22-2
37	718647	2	VALVE

REAR WHEEL(REDUCTION GEAR PLASTIC)

H 11

* DO NOT FORGET TO SPECIFY COLOUR

